



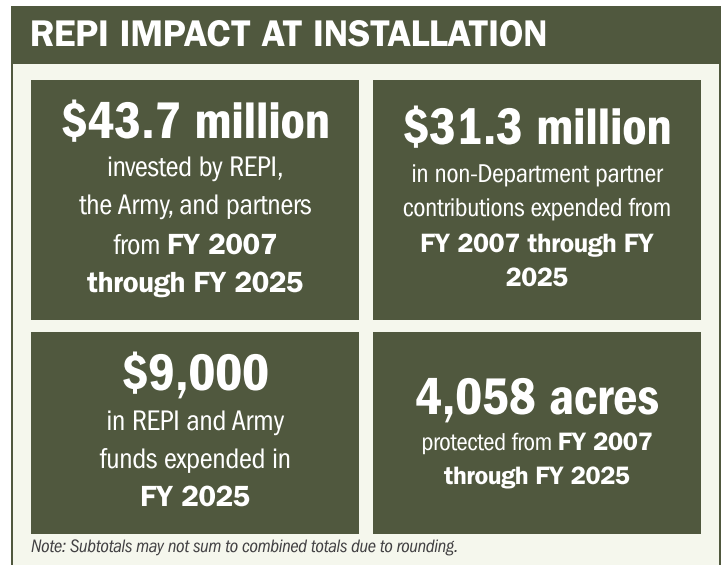
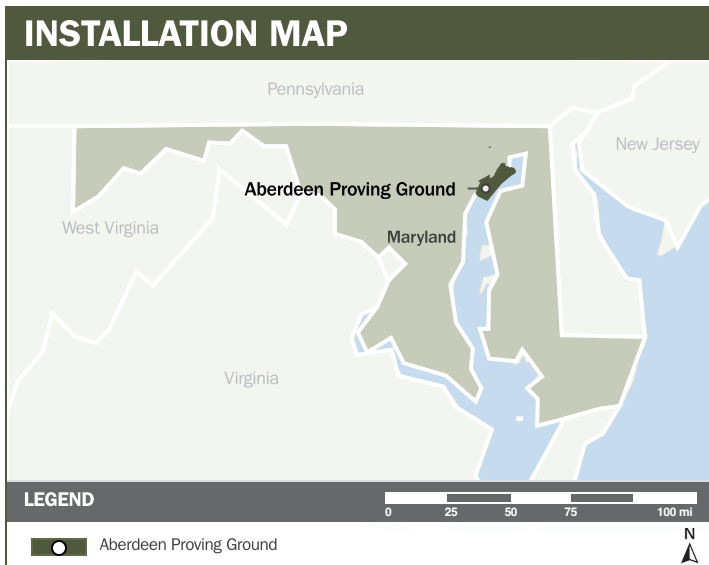
ABERDEEN PROVING GROUND

ABOUT THE INSTALLATION

Aberdeen Proving Ground (APG), the Department of War's oldest active proving ground, provides an integrated land-water-airspace range complex supporting the full spectrum of defense testing and training. Its Chesapeake Bay location enables co-located research, development, testing, and evaluation for all Army materiel and offers joint training terrain, waterways, and airspace for all Military Services. APG's rigorous testing of armored platforms, weapons and ammunition, tactical vehicles, night-vision technologies, and naval systems ensure warfighters receive reliable, mission-ready capabilities.

STRENGTHENING MISSION READINESS THROUGH REPI INVESTMENTS

The DoW Readiness and Environmental Protection Integration (REPI) Program has played a critical role in supporting Aberdeen Proving Ground's long-term operational success. Through strategic land conservation and partnership-driven investments, REPI funding has helped prevent incompatible development, preserve training flexibility, and sustain critical capabilities beyond the installation boundary.



PROJECT OVERVIEW

INCOMPATIBLE DEVELOPMENT—10 U.S.C. § 2684A

- APG's coastal location enables the Army to test vehicles in 80 percent of real-world environments using world-renowned test tracks, assets that are irreplaceable and essential for current and future vehicle testing.
- The installation faces a wide range of encroachment risks, including rapid suburban growth extending from Baltimore and surrounding communities, noise traveling across the Chesapeake Bay, natural resource and land use regulations, security concerns from nearby development, marine trespassing, and electromagnetic interference.





ABERDEEN PROVING GROUND

PROJECT OVERVIEW (CONTINUED)

- To address these threats, APG is working with the Harford Land Trust and Eastern Shore Land Conservancy to leverage REPI Program funds to relieve restrictions on post by limiting noise and vibration complaints and ensuring the land surrounding the installation is compatible with the testing missions. Reducing these encroachment risks gives the Range Commander greater flexibility to reconfigure range assets and conduct required testing, and reduce costs by avoiding damage to private, off-post structures from APG’s testing operations.

KEY FISCAL YEAR MILESTONES AT ABERDEEN PROVING GROUND*

2006 Established the first REPI Program project to address significant suburban growth and associated increases in noise complaints.

2020 Surpassed 1,000 acres protected, helping maximize the mission use of APG lands and strengthening longterm testing capability.

* These milestones demonstrate how the installation is strategically utilizing the REPI Program to mitigate encroachment risks and enhance mission assurance. While not exhaustive, the list highlights the various approaches installations are using to preserve critical testing and training capabilities essential to national defense.



Subscribe to the REPI Program Listserv by scanning the QR code.
For more information about the REPI Program and supportive DOD efforts, please visit www.repi.mil.