



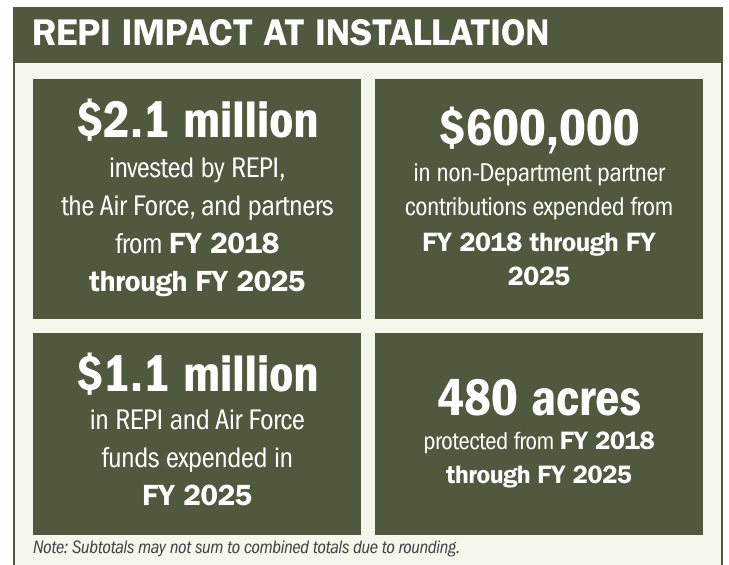
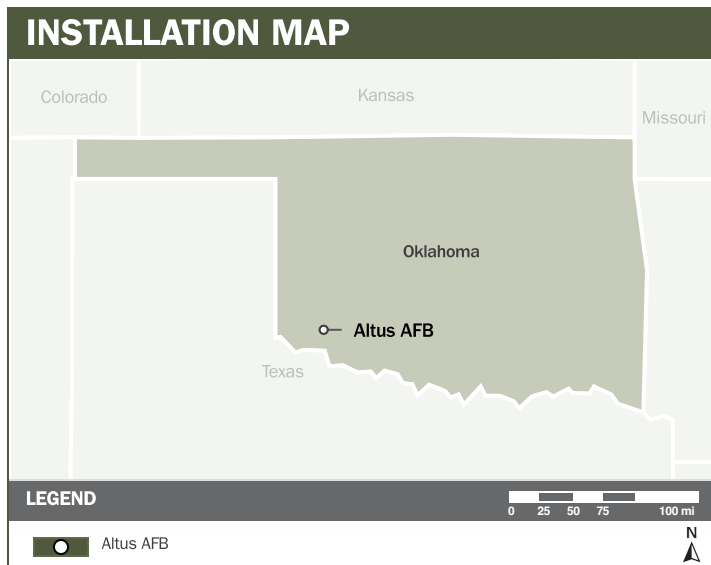
# ALTUS AFB

## ABOUT THE INSTALLATION

Altus Air Force Base (Aafb), located in southwest Oklahoma, is home to the 97th Air Mobility Wing and operates the only heavy mobility and air refueling schoolhouse in the Air Force, training pilots for C-17, KC-135, and KC-46 aircraft. The installation's strategic location and broad aviation capabilities enable the Air Force to train airmen for global mobility and refueling missions essential to national security.

## STRENGTHENING MISSION READINESS THROUGH REPI INVESTMENTS

The Department of War's (DoW) Readiness and Environmental Protection Integration (REPI) Program has played a critical role in supporting Aafb's long-term operational success. Through strategic land conservation and partnership-driven investments, REPI funding has helped prevent incompatible development, preserve critical groundwater resources, and sustain mission capabilities beyond the installation boundary.



## PROJECT OVERVIEW

### INCOMPATIBLE DEVELOPMENT—10 U.S.C. § 2684A

- The 2,135 linear miles of low-level airspace are crucial to Aafb's training missions. The installation also hosts advanced training equipment, including 6 KC-46 simulators and 6 refueling simulators.
- Potential wind energy development in the area poses a serious threat to the installation's low-level training routes. This development could result in avoidance zones, limit usable airspace, and reduce low-level airdrop training areas.
- To address these threats, Aafb is working with its partners to acquire restrictive use easements on properties surrounding the installation to limit the potential for height obstructions and radar interference.





# ALTUS AFB

## PROJECT OVERVIEW (CONTINUED)

### INSTALLATION RESILIENCE—10 U.S.C. § 2684A

- Recurring drought poses risks for AAFB’s missions, requiring temporary or permanent changes to installation activities and mission operations. Prolonged drought also contributes to increased incompatible development risks as agricultural producers convert existing agricultural lands to support wind energy development instead.
- Limited options exist for addressing threats from drought, but the City of Altus and the Tom Steed Master Conservancy, together with AAFB, are working to secure water rights to the Tillman Terrace aquifer to alleviate this challenge.
- These REPI project efforts will provide AAFB access to a reliable supply of water and help deliver secured groundwater to the City’s water system, strengthening drought resilience for both the installation and the surrounding defense community.



## KEY FISCAL YEAR MILESTONES AT ALTUS AFB\*

**2018**  Altus AFB established its first REPI project, laying the foundation for long-term partnerships to address encroachment challenges and strengthen installation resilience.

**2021**  Altus AFB and the Tom Steed Master Conservancy District acquired 480 acres along with mineral and water rights to secure critical resources for operations.

**2025**  The Air Force invested over \$1.7 million with partners to protect water rights across two properties spanning nearly 1,500 acres, directly enhancing installation resilience and readiness.

\* These milestones demonstrate how the installation is strategically utilizing the REPI Program to mitigate encroachment risks and enhance mission assurance. While not exhaustive, the list highlights the various approaches installations are using to preserve critical testing and training capabilities essential to national defense.



Subscribe to the REPI Program Listserv by scanning the QR code.  
For more information about the REPI Program and supportive DoW efforts, please visit [www.repi.mil](http://www.repi.mil).