



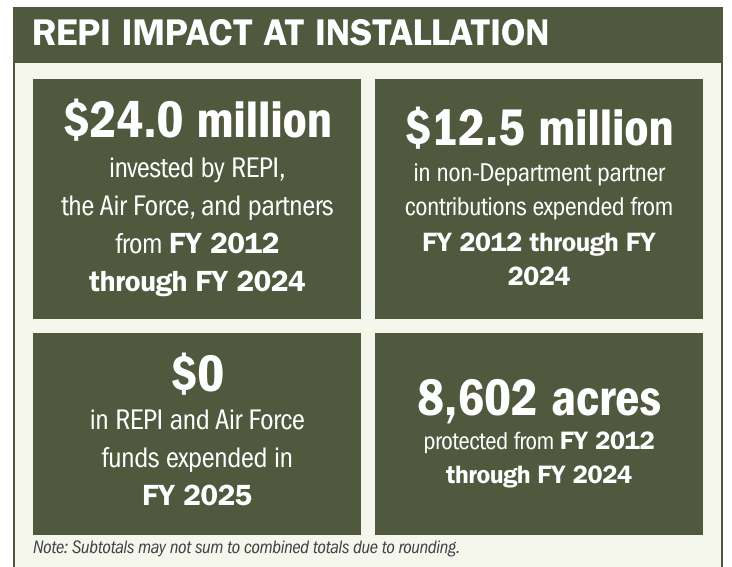
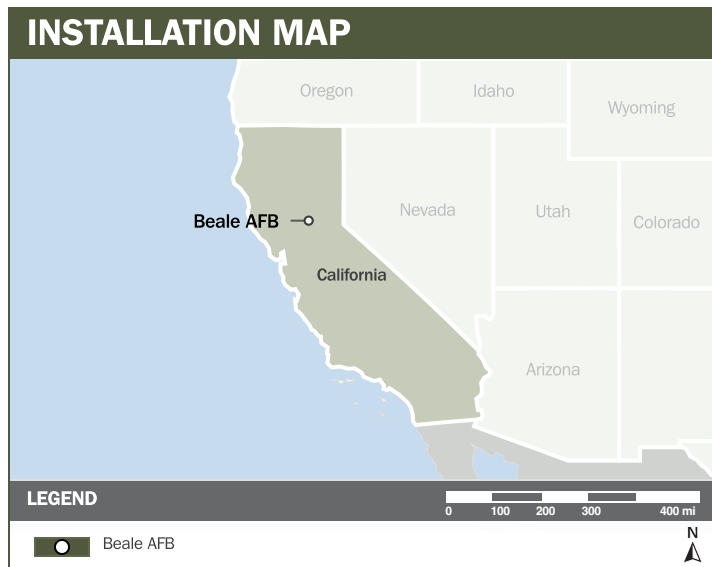
# BEALE AFB

## ABOUT THE INSTALLATION

Beale Air Force Base (AFB), located 40 miles north of the Sacramento metro area, hosts the PAVE Phased Array Warning System (PAWS), which provides early warning and tracking of sea-launched and intercontinental ballistic missiles. Beale AFB conducts live fire M60 machine gun training, strengthening joint force readiness across all four Services.

## STRENGTHENING MISSION READINESS THROUGH REPI INVESTMENTS

The Department of War's (DoW) Readiness and Environmental Protection Integration (REPI) Program has played a critical role in supporting Beale AFB's long-term operational success. Through strategic land conservation and partnership-driven investments, REPI funding secures mission critical ground and surface water supplies and mitigates severe wildfire risk, ensuring uninterrupted operations and long-term resilience.



## PROJECT OVERVIEW

### INCOMPATIBLE DEVELOPMENT—10 U.S.C. § 2684A

- Encroaching development around Beale AFB threatens reconnaissance operations, T-38 and KC-135 training, and critical aerial missions supporting the U.S. Forest Service and CalFire.
- Beale's missions are especially vulnerable to incompatible development due to PAVE PAWS' sensitivity to electromagnetic interference and the noise footprint of live-fire training. Residential growth increases risks tied to noise complaints, accident potential, and operations security concerns such as drones or laser pointers disrupting flight activity.
- Through the REPI Program, Beale AFB is protecting surrounding agricultural lands to block incompatible development, sustain working farms and ranches that support Yuba County's economy, and reduce electromagnetic interference risks to PAVE PAWS by preventing urban expansion near the installation boundary.





# BEALE AFB

## PROJECT OVERVIEW (CONTINUED)

### INSTALLATION RESILIENCE—10 U.S.C. § 2684A

- Wildfires directly disrupt Beale AFB training and constrain installation and community operations by limiting base access, straining groundwater supplies, and increasing flood, landslide, and health risks. Yuba County faces some of the state’s highest wildfire hazards, with CalFire designating the region as High to Severe Fire Hazard Safety Zones.
- Building on the installation’s Integrated Natural Resources Management Plan, Beale AFB is mitigating risks to mission operations, personnel, and property by reducing vegetated fuels through grazing leases and prescribed burns.
- REPI wildfire-mitigation funding, combined with matching support from California’s Sustainable Agricultural Lands Conservation Program, accelerates Beale AFB’s ability to implement fuels-management projects that safeguard uninterrupted training and operational readiness.



## KEY FISCAL YEAR MILESTONES AT BEALE AFB\*

**2009** Beale AFB established its REPI project to safeguard mission assurance and protect critical training lands.

**2011** The installation secured its first conservation easement across more than 800 acres to prevent incompatible development and sustain operational readiness.

**2022** Beale AFB was selected as a REPI Challenge funding recipient, advancing installation resilience projects that mitigate wildfire risk and protect mission critical resources.

\* These milestones demonstrate how the installation is strategically utilizing the REPI Program to mitigate encroachment risks and enhance mission assurance. While not exhaustive, the list highlights the various approaches installations are using to preserve critical testing and training capabilities essential to national defense.



Subscribe to the REPI Program Listserv by scanning the QR code.  
For more information about the REPI Program and supportive DoW efforts, please visit [www.repi.mil](http://www.repi.mil).