



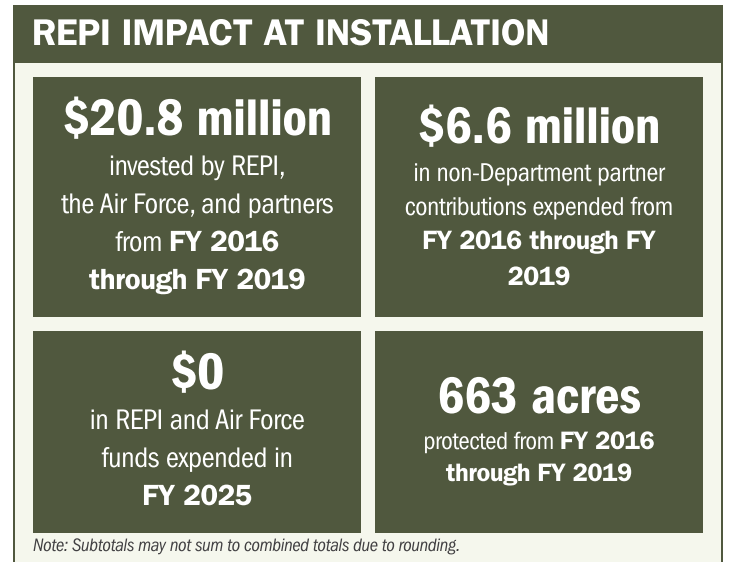
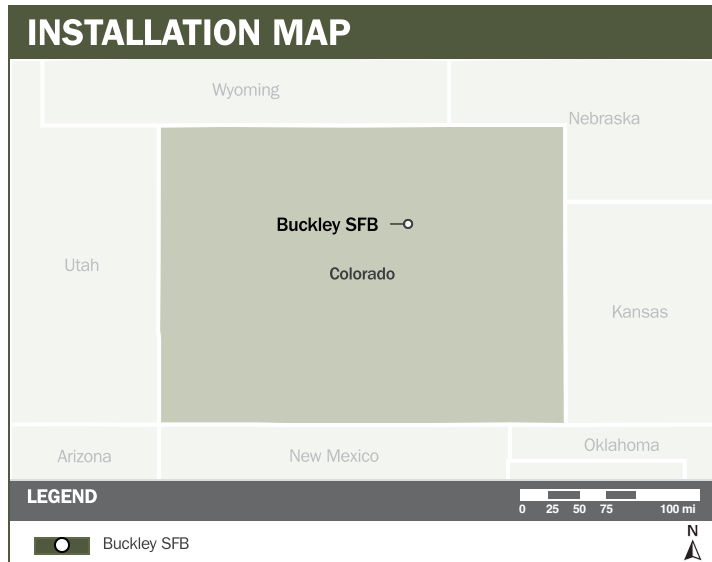
BUCKLEY SFB

ABOUT THE INSTALLATION

With access to 11.1 million acres of associated airspace across five adjacent states, Buckley Space Force Base (SFB) provides mission critical training and operational support for fixed wing and rotary tenant units, and serves as a strategic refueling hub for DoW aircraft on cross country missions, including support to Air Force One. The 460th Space Wing is Buckley’s home unit, with a mission to provide unencumbered “look angles” for antennae to ensure constant communication with space surveillance and missile tracking satellites, directly supporting national defense and deterrence.

STRENGTHENING MISSION READINESS THROUGH REPI INVESTMENTS

The Department of War’s (DoW) Readiness and Environmental Protection Integration (REPI) Program has played a critical role in supporting Buckley SFB’s long-term operational success. Through strategic land conservation and partnership-driven investments, REPI funding has helped prevent incompatible development, preserve training flexibility, and sustain critical capabilities beyond the installation boundary.



PROJECT OVERVIEW

INCOMPATIBLE DEVELOPMENT—10 U.S.C. § 2684A

- To sustain the base’s diverse set of missions, Buckley SFB and partners are working to protect agricultural, recreational, and other compatibly used lands, particularly along the E-470 highway corridor extending south from Denver International Airport toward the base’s eastern boundary. Development on Buckley’s western boundary has already forced the closure of one of the installation’s two runways, directly impacting operational capacity.
- As more land develops near the fence line, noise complaints increase, airspace becomes congested from changes in flight patterns, and light pollution degrades night vision training effectiveness.



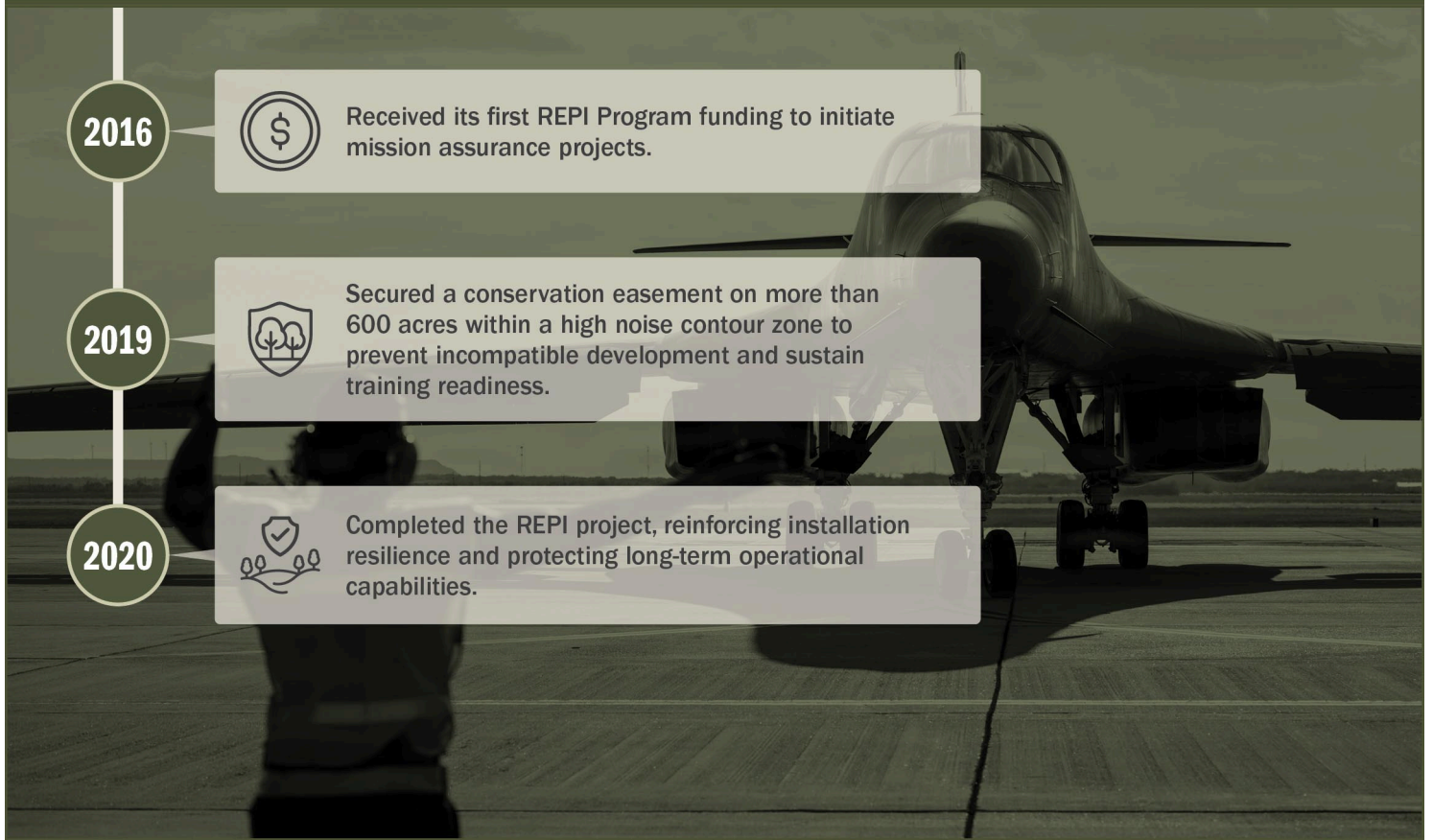


BUCKLEY SFB

PROJECT OVERVIEW (CONTINUED)

- To address these threats, Buckley SFB has leveraged the REPI Program to create a compatible land use buffer using restrictive easements that ensure the prevention of incompatible development along the installation's boundary. The installation is also using land trades to provide full ownership of the Clear Zone, strengthening mission assurance and operational safety.

KEY FISCAL YEAR MILESTONES AT BUCKLEY SFB*



* These milestones demonstrate how the installation is strategically utilizing the REPI Program to mitigate encroachment risks and enhance mission assurance. While not exhaustive, the list highlights the various approaches installations are using to preserve critical testing and training capabilities essential to national defense.



Subscribe to the REPI Program Listserv by scanning the QR code.
For more information about the REPI Program and supportive DoW efforts, please visit www.repi.mil.