



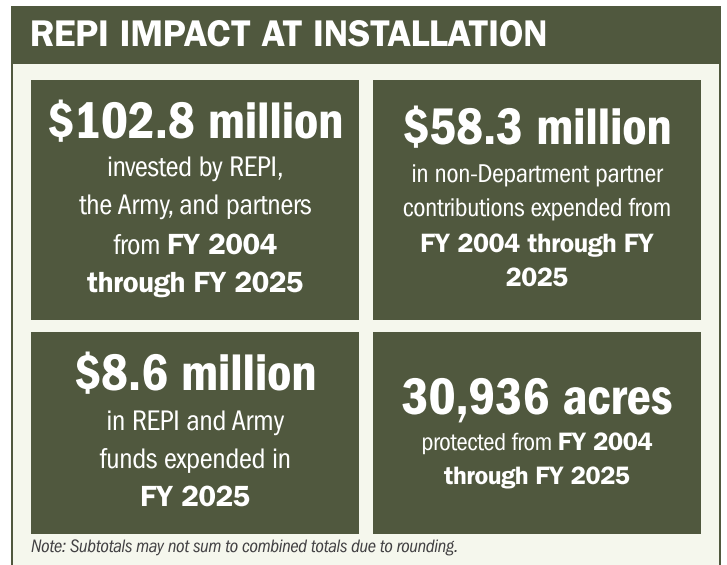
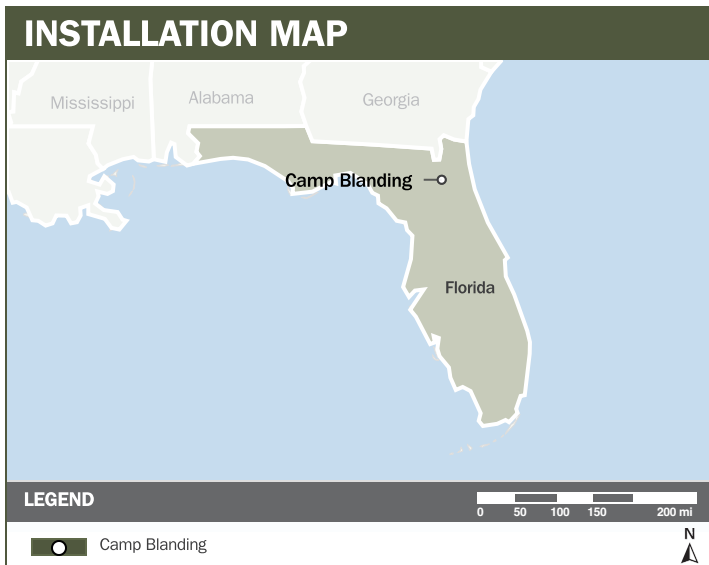
CAMP BLANDING

ABOUT THE INSTALLATION

Camp Blanding Joint Training Center (CBJTC) is a Maneuver Training Center supporting large-scale, multi-domain operations across expansive maneuver land, a dedicated high-explosive impact area, and restricted airspace for fixed-wing, rotary-wing, and unmanned aircraft. Its infrastructure includes comprehensive live-fire ranges, an assault landing strip, shoot houses, convoy training lanes, and a modern urban operations and combined-arms complex. The installation also hosts a civil engineering squadron capable of rapidly deploying worldwide to repair runways, facilities, and utilities in support of Air Force missions.

STRENGTHENING MISSION READINESS THROUGH REPI INVESTMENTS

The Department of War's Readiness and Environmental Protection Integration (REPI) Program is essential to sustaining CBJTC's long-term operational effectiveness. Through targeted land conservation and partnership-driven investments, REPI efforts prevent incompatible development, protect training flexibility, and preserve mission-critical capabilities beyond the installation boundary.



PROJECT OVERVIEW

Incompatible Development—10 U.S.C. § 2684a

- Residential growth near CBJTC continues to drive incompatible development, generating noise, dust, and smoke complaints that have historically affected the installation's ability to conduct mission-essential training.
- Development along the installation boundary increases the risk of training restrictions, particularly for live-fire and low-altitude aviation operations critical to readiness.
- To address these threats, CBJTC is leveraging REPI Program funds under 10 U.S.C. § 2684a to limit incompatible development, preserve maneuver space, protect aviation corridors, and sustain the full spectrum of training activities required at the installation.





CAMP BLANDING

PROJECT OVERVIEW (CONTINUED)

Habitat Preservation—10 U.S.C. § 2684a

- Protected species requirements and historic fuel buildup along the installation boundary elevate wildfire risk, threatening surrounding communities and constraining maneuver flexibility.
- REPI investments support prescribed fire and landscape management programs that reduce wildfire risk, maintain high-quality habitat, and protect access to mission-critical training areas.
- CBJTC also advances regulatory relief by supporting management of the threatened gopher tortoise through a restocking site that receives relocated tortoises from installation construction activities.



KEY FISCAL YEAR MILESTONES AT CAMP BLANDING*

2003



Camp Blanding established its first partnership under 10 U.S.C. § 2684a, leveraging the Florida Forever program to secure conservation lands and easements. This effort helped reduce potential restrictions from Endangered Species Act-listed species and protect the installation’s ability to conduct mission-essential testing and training.

2022



A 157-acre woodland tract in Putnam County was acquired for conservation, advancing efforts to protect natural habitats and prevent incompatible development near Camp Blanding.

2025



Camp Blanding and partners protected more than 83 acres within the ecologically significant Ocalato Osceola Wildlife Corridor, supporting native species while strengthening long-term military readiness and installation resilience.



* These milestones demonstrate how the installation is strategically utilizing the REPI Program to mitigate encroachment risks and enhance mission assurance. While not exhaustive, the list highlights the various approaches installations are using to preserve critical testing and training capabilities essential to national defense.



Subscribe to the REPI Program Listserv by scanning the QR code.
For more information about the REPI Program and supportive DOD efforts, please visit www.repi.mil.