



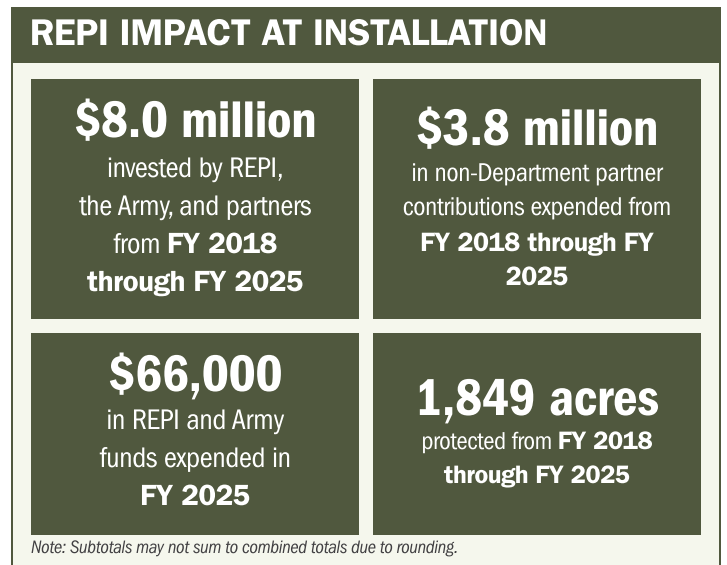
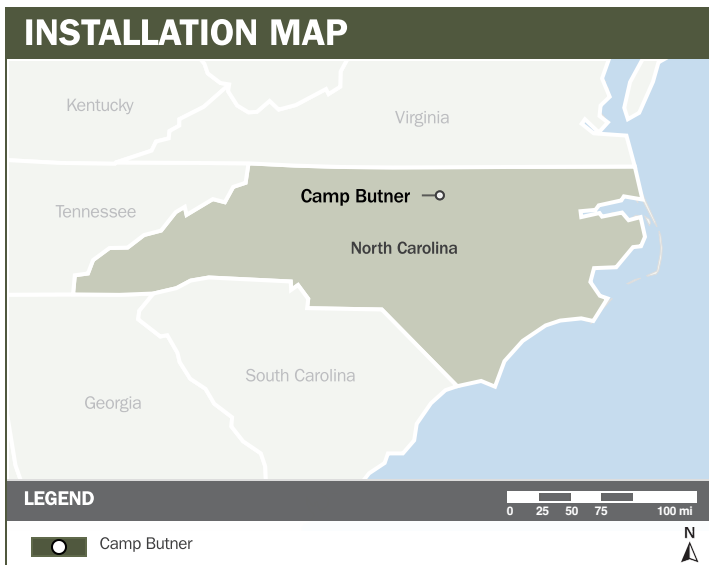
CAMP BUTNER

ABOUT THE INSTALLATION

Camp Butner Training Center (CBTC) contains 98 percent of the North Carolina Army National Guard's (NCARNG) field training acreage and all of its small arms ranges. CBTC also supports training for the North Carolina Air National Guard, U.S. Army Reserve, Reserve Officer Training Corps, and active units from Fort Bragg and Camp LeJeune.

STRENGTHENING MISSION READINESS THROUGH REPI INVESTMENTS

The Department of War (DoW) Readiness and Environmental Protection Integration (REPI) Program has played a critical role in sustaining CBTC's long-term operational success. Through strategic land conservation and partnership-driven investments, REPI funding has helped prevent incompatible development, preserve training flexibility, and sustain critical capabilities beyond the installation boundary.



PROJECT OVERVIEW

INCOMPATIBLE DEVELOPMENT—10 U.S.C. § 2684A

- Located roughly 15 miles north of Raleigh and Durham, two of North Carolina's largest and fastest-growing cities, CBTC faces increasing incompatible development pressures that threaten long-term training capability.
- Across the state, noise concerns, light pollution, and trespassing related safety issues have steadily increased at other military installations as population growth accelerates, demonstrating the types of pressures that could eventually affect the installation's ability to test, train, and operate.
- The installation is taking proactive steps to prevent future restrictions by leveraging REPI Program authorities under 10 U.S.C. § 2684a to protect 80 percent of the land within one mile of CBTC to reduce or eliminate foreseeable constraints on live fire training, field operations, and flight activities.





CAMP BUTNER

PROJECT OVERVIEW (CONTINUED)

HABITAT PRESERVATION—10 U.S.C. § 2684A

- Multiple threatened and state-listed species, including the tricolored bat, rusty-patched bumblebee, and monarch butterfly, reside on or near CBTC, increasing the potential for future environmental constraints on training.
- The presence of these species may require limits on certain activities—such as live-fire exercises, helicopter operations, and facility maintenance—to avoid adverse impacts and maintain compliance with environmental requirements.
- Through the REPI Program, CBTC is establishing buffer zones to prevent encroachment and protect habitat for the timber rattlesnake, a species nearly lost from North Carolina’s Piedmont region. Maintaining a one-mile buffer of natural lands outside the installation supports remaining populations while minimizing potential effects on mission readiness.



KEY FISCAL YEAR MILESTONES AT CAMP BUTNER*

2017



The installation developed its first REPI project, establishing long-term protections for clean water sources while sustaining mission-critical training capabilities. Partners helped safeguard more than 10,000 acres of prime watershed, an increasingly vital resource for both installation operations and military installation resilience.

2018



The REPI Program partnered with a local land trust, state and municipal water quality programs, and the Army National Guard to permanently protect 127 acres adjoining Camp Butner. This effort strengthens the installation’s training mission and helps secure drinking water for surrounding communities.

* These milestones demonstrate how the installation is strategically utilizing the REPI Program to mitigate encroachment risks and enhance mission assurance. While not exhaustive, the list highlights the various approaches installations are using to preserve critical testing and training capabilities essential to national defense.



Subscribe to the REPI Program Listserv by scanning the QR code.
For more information about the REPI Program and supportive DOD efforts, please visit www.repi.mil.