



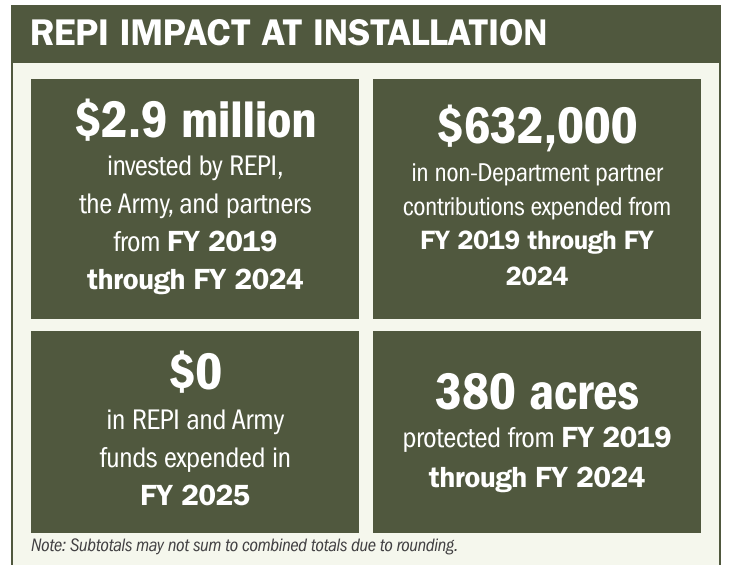
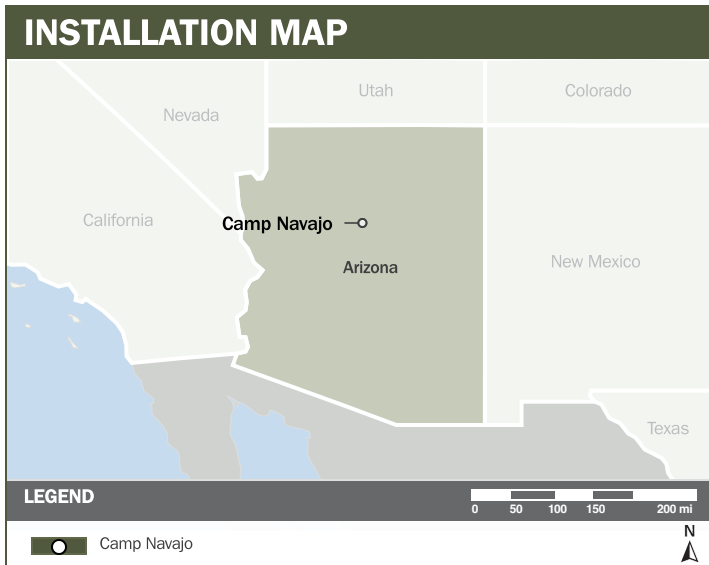
# CAMP NAVAJO

## ABOUT THE INSTALLATION

Camp Navajo delivers maneuver, chemical, biological, radiological, nuclear, airmobile, and dropzone training for the Air Force, Army, and Navy. As one of the West's few high-altitude readiness sites, it prepares forces to deploy, operate, and survive in extreme environments. The installation serves as a joint hub for special operations, personnel recovery, Federal law enforcement, and homeland security. It is also one of only two Department of War (DoW) sites storing Navy and Air Force rocket motors from nuclear missiles missions.

## STRENGTHENING MISSION READINESS THROUGH REPI INVESTMENTS

The DoW's Readiness and Environmental Protection Integration (REPI) Program is essential to sustaining Camp Navajo's long-term operational capability. Targeted land conservation and partnership driven investments help prevent incompatible development, protect critical training corridors, and preserve the installation's unique highaltitude environment, ensuring Camp Navajo maintains the maneuver space and flexibility required for joint, interagency, and multinational readiness.



## PROJECT OVERVIEW

### INCOMPATIBLE DEVELOPMENT—10 U.S.C. § 2684A

- Camp Navajo's ranges sit directly on the installation boundary, increasing exposure to encroachment, trespassing, light pollution, noise, and wildfire risk.
- The installation is one of only two DoW sites storing Navy and Air Force rocket motors and munitions—a globally sensitive mission requiring strict protection from trespass and incompatible development.
- To address these threats, Camp Navajo is leveraging REPI Program funding under 10 U.S.C. § 2684a to protect aerial and ground maneuver training areas, the small-arms range, and the light demolition range, ensuring the installation retains the operational space and security needed to support mission-critical training.





# CAMP NAVAJO


## PROJECT OVERVIEW (CONTINUED)


### INSTALLATION RESILIENCE—10 U.S.C. § 2684A


- Camp Navajo faces elevated wildfire risk from adjacent lands and on-post fuel buildup, conditions that have already forced training cancellations during high-danger periods.
- Implementing forest treatments, such as mechanical thinning and prescribed burning, reduces the likelihood of high-intensity wildfires, protects military infrastructure, minimizes smoke impacts during training, and lowers long-term fire response costs.



## KEY FISCAL YEAR MILESTONES AT CAMP NAVAJO\*

**2017**  Camp Navajo established its first REPI project to protect areas in the surrounding defense communities, thereby preserving maneuver space and safeguarding the installation's unique high altitude training environment.

**2022**  Camp Navajo received REPI Challenge funding to protect 5,363 acres surrounding the installation, reducing wildlife-related risks and strengthening the resilience of critical training and munitions storage missions.

**2023**  Camp Navajo received REPI Challenge funding for a second consecutive year to expand wildfire-mitigation efforts. These investments help protect the installation from catastrophic wildfires, post-wildfire flooding, and smoke impacts, enhancing the safety of installation infrastructure, personnel, and nearby communities.

\* These milestones demonstrate how the installation is strategically utilizing the REPI Program to mitigate encroachment risks and enhance mission assurance. While not exhaustive, the list highlights the various approaches installations are using to preserve critical testing and training capabilities essential to national defense.



Subscribe to the REPI Program Listserv by scanning the QR code.  
For more information about the REPI Program and supportive DOD efforts, please visit [www.repi.mil](http://www.repi.mil).