



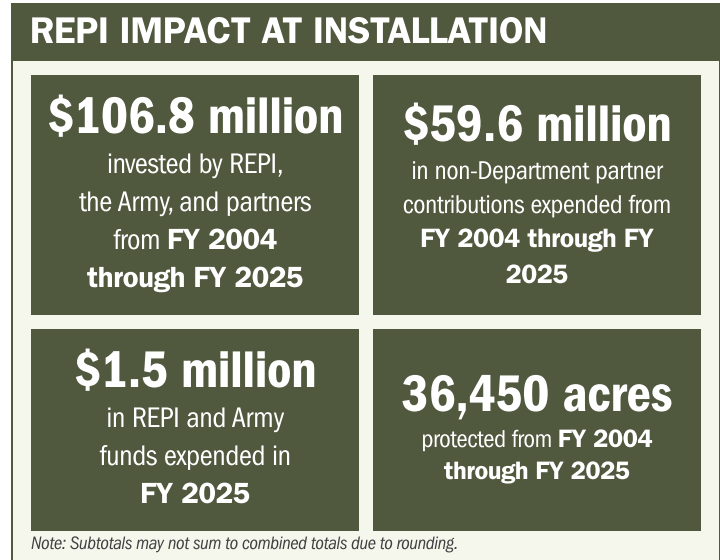
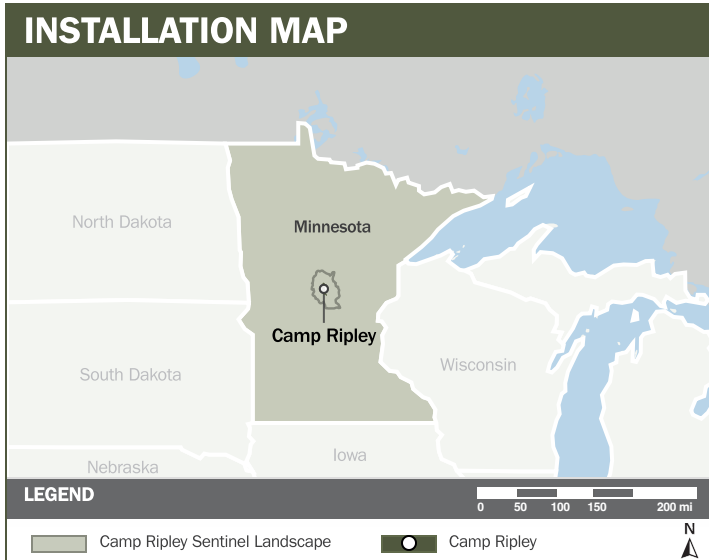
# CAMP RIPLEY

## ABOUT THE INSTALLATION

Camp Ripley is the anchor installation of the Camp Ripley Sentinel Landscape and serves as a primary U.S. winter training site for the National Guard and a key Army National Guard installation. The installation supports ground maneuver training, live-fire artillery and bombing exercises, and hosts training for active-duty forces, foreign partners, and civilian agencies. As the principal training center for all Minnesota National Guard units, Camp Ripley trains tens of thousands of warfighters each year and remains a critical regional readiness platform.

## STRENGTHENING MISSION READINESS THROUGH REPI INVESTMENTS

The Department of War’s Readiness and Environmental Protection Integration (REPI) Program is essential to sustaining Camp Ripley’s long-term operational capability. Targeted land conservation and partnership-driven investments help prevent incompatible development, protect key training corridors, and preserve the installation’s ability to conduct large-scale, multi-domain training.



## PROJECT OVERVIEW

### INCOMPATIBLE DEVELOPMENT—10 U.S.C. § 2684A

- Growing incompatible development around Camp Ripley threatens training by influencing when, where, and how long units can conduct small-arms, tank, artillery, and machine-gun exercises essential to readiness.
- Rapid residential growth is driving increased dust, noise, and smoke, as well as aircraft-related complaints, increasing the risk of future training restrictions and higher long-term operating costs for the Minnesota National Guard.
- Leveraging 10 U.S.C. § 2684a, Camp Ripley is using the REPI Program to establish protective buffers on nearby private agricultural lands. These buffers reduce encroachment, safeguard critical training areas, and preserve the installation’s ability to conduct missions without restriction.





# CAMP RIPLEY

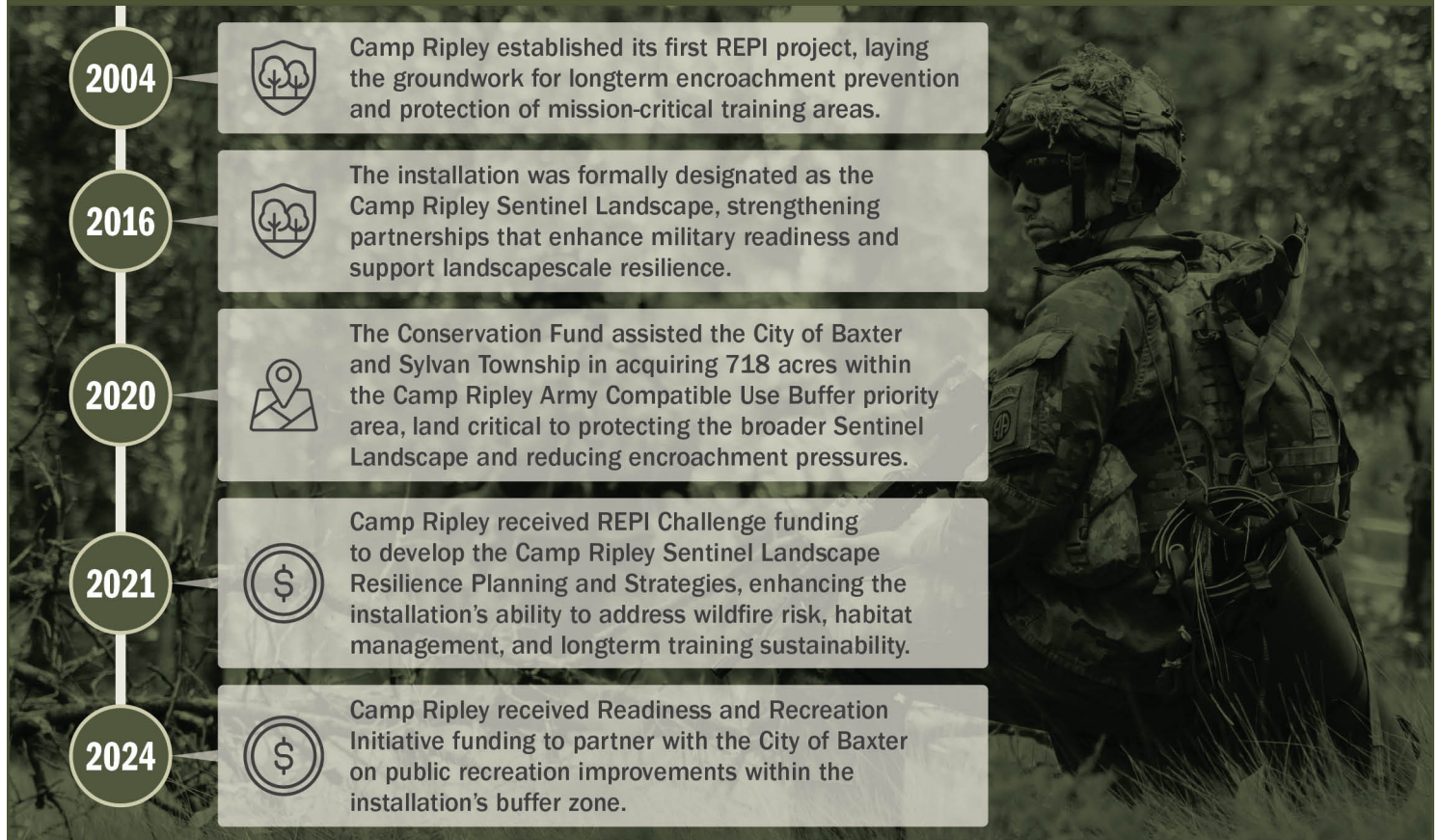
## PROJECT OVERVIEW (CONTINUED)






### INSTALLATION RESILIENCE—10 U.S.C. § 2684A

- Changing environmental conditions are increasing risks to habitats connected to Camp Ripley, raising the potential for future restrictions on training.
- Severe weather has already caused significant damage, and without conserving surrounding lands, riverine flooding, extreme weather, and wildfire impacts will intensify as weather-related pressures grow.
- Leveraging 10 U.S.C. § 2684a authority, REPI efforts strengthen installation resilience against drought, flooding, and wildfire while preserving habitats tied to the installation. These actions help prevent future environmental constraints that would otherwise disrupt training, testing, and operational readiness.



## KEY FISCAL YEAR MILESTONES AT CAMP RIPLEY\*



- 2004**  Camp Ripley established its first REPI project, laying the groundwork for longterm encroachment prevention and protection of mission-critical training areas.
- 2016**  The installation was formally designated as the Camp Ripley Sentinel Landscape, strengthening partnerships that enhance military readiness and support landscape-scale resilience.
- 2020**  The Conservation Fund assisted the City of Baxter and Sylvan Township in acquiring 718 acres within the Camp Ripley Army Compatible Use Buffer priority area, land critical to protecting the broader Sentinel Landscape and reducing encroachment pressures.
- 2021**  Camp Ripley received REPI Challenge funding to develop the Camp Ripley Sentinel Landscape Resilience Planning and Strategies, enhancing the installation's ability to address wildfire risk, habitat management, and longterm training sustainability.
- 2024**  Camp Ripley received Readiness and Recreation Initiative funding to partner with the City of Baxter on public recreation improvements within the installation's buffer zone.

\* These milestones demonstrate how the installation is strategically utilizing the REPI Program to mitigate encroachment risks and enhance mission assurance. While not exhaustive, the list highlights the various approaches installations are using to preserve critical testing and training capabilities essential to national defense.



Subscribe to the REPI Program Listserv by scanning the QR code.  
For more information about the REPI Program and supportive DOD efforts, please visit [www.repi.mil](http://www.repi.mil).