



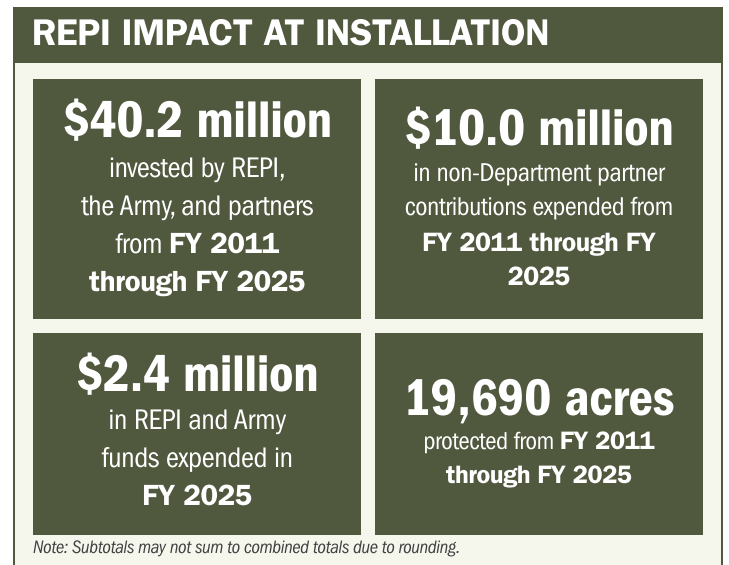
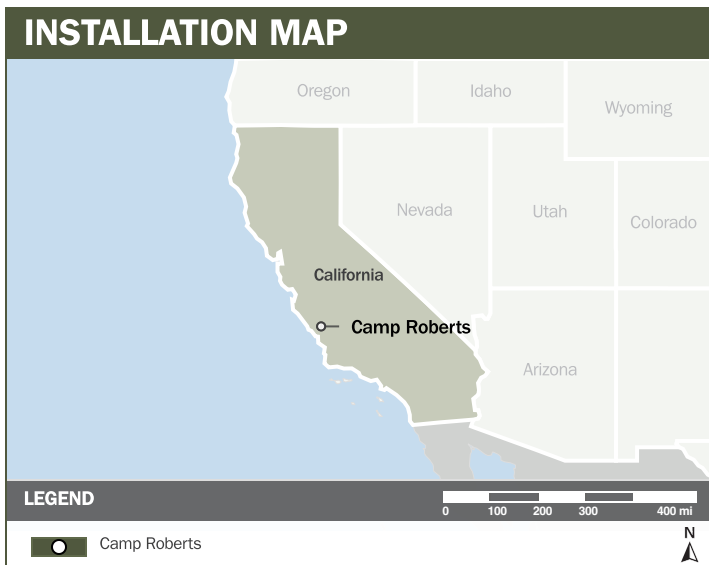
# CAMP ROBERTS

## ABOUT THE INSTALLATION

Camp Roberts is the largest California Army National Guard training site at 42,784 acres and is located halfway between Los Angeles and San Francisco. The installation also supports Army Reserve and Marine Corps Reserve units for mobilization, demobilization, and pre-mobilization activities. Its extensive maneuver areas and numerous live fire and simulated ranges make Camp Roberts a critical training platform for infantry, armor, and artillery units.

## STRENGTHENING MISSION READINESS THROUGH REPI INVESTMENTS

The Department of War (DoW) Readiness and Environmental Protection Integration (REPI) Program has played a critical role in supporting Camp Roberts' long-term operational success. Through strategic land conservation and partnership-driven investments, REPI funding has helped prevent incompatible development, preserve training flexibility, and sustain critical capabilities beyond the installation boundary.



## PROJECT OVERVIEW

### INCOMPATIBLE DEVELOPMENT—10 U.S.C. § 2684A

- Camp Roberts is currently surrounded by open-grazing lands and agricultural uses, but Highway 101 creates strong potential for future growth. Development of nearby ranch parcels would increase noise conflicts.
- Incompatible development and increased local air traffic pose risks to both ground and air operations. Any degradation of Camp Roberts' training capability would significantly weaken the Joint Force's ability to support defense priorities.
- To counter these threats, Camp Roberts is leveraging REPI Program funding under 10 U.S.C. § 2684a authority to protect critical lands around its training areas. These efforts safeguard properties along the eastern boundary and preserve air operations, drop zones, and flight paths essential to maintaining an unrestricted training environment.





# CAMP ROBERTS

## PROJECT OVERVIEW (CONTINUED)

### Habitat Preservation—10 U.S.C. § 2684A

- The region around Camp Roberts is increasingly prone to riverine flooding, with storms approaching 100-year flood volumes now occurring every 5–10 years. These events damage access roads and on-installation infrastructure, directly affecting training operations.
- To strengthen watershed resilience, Camp Roberts is leveraging the REPI Program to restore portions of the watershed as functional wetlands during flood events, improving natural flood-management capacity.
- These efforts help the installation avoid lost training days and prevent damage to mission-critical infrastructure during severe rain events, preserving readiness and operational continuity.



## KEY FISCAL YEAR MILESTONES AT CAMP ROBERTS\*

2011



Established the first REPI project, initiating long-term encroachment reduction efforts.

2013



Camp Roberts completed an OLDCC Installation Readiness Program Study

\* These milestones demonstrate how the installation is strategically utilizing the REPI Program to mitigate encroachment risks and enhance mission assurance. While not exhaustive, the list highlights the various approaches installations are using to preserve critical testing and training capabilities essential to national defense.



Subscribe to the REPI Program Listserv by scanning the QR code.  
For more information about the REPI Program and supportive DoW efforts, please visit [www.repi.mil](http://www.repi.mil).