



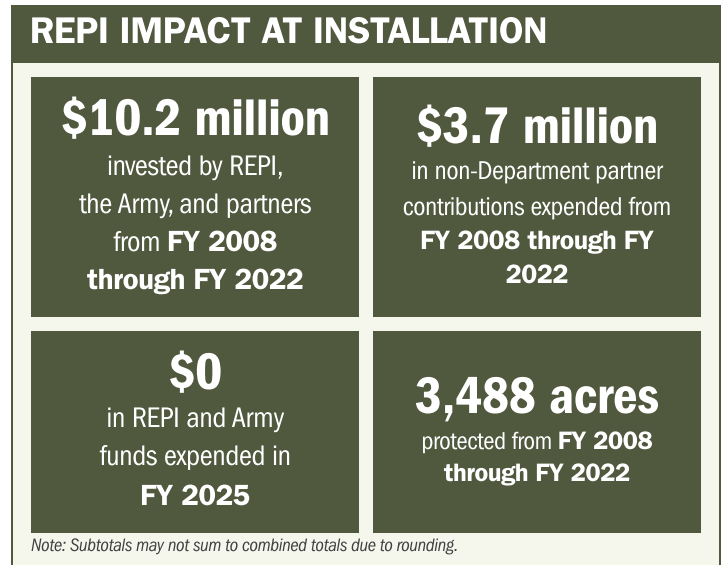
CAMP SAN LUIS OBISPO

ABOUT THE INSTALLATION

Camp San Luis Obispo is one of California’s largest and most versatile state-owned training areas, providing essential support to Army National Guard and Reserve units. The installation delivers a full spectrum of live, virtual, and constructive training and hosts field training facilities used by a wide range of Federal, state, and community organizations. Its diverse terrain and flexible training infrastructure make Camp San Luis Obispo a critical asset for preparing forces to meet state and national defense requirements.

STRENGTHENING MISSION READINESS THROUGH REPI INVESTMENTS

The Department of War (DoW) Readiness and Environmental Protection Integration (REPI) Program has played a critical role in supporting Camp San Luis Obispo’s long-term operational success. Through strategic land conservation and partnership-driven investments, REPI funding has helped prevent incompatible development, preserve training flexibility, and sustain critical capabilities beyond the installation boundary.



PROJECT OVERVIEW

INCOMPATIBLE DEVELOPMENT—10 U.S.C. § 2684A

- Encroachment from expanding residential development increases the risk of nighttime training restrictions and limits the types of munitions that can be used on the installation. These pressures directly threaten the realism and intensity of required training.
- Preventing incompatible development preserves uninterrupted use of Camp San Luis Obispo’s airspace and training areas, allowing the installation to continue conducting exercises that might otherwise generate noise or dust complaints.
- To counter these risks, Camp San Luis Obispo is leveraging REPI Program funding under 10 U.S.C. § 2684a to protect critical training land. These efforts secure key terrain that provides the rugged, realistic conditions warfighters need to achieve and maintain combat readiness.





CAMP SAN LUIS OBISPO

PROJECT OVERVIEW (CONTINUED)

HABITAT PRESERVATION—10 U.S.C. § 2684A

- Protecting open space and agricultural lands in the buffer area preserves habitat for threatened and endangered species, reducing regulatory pressures that could restrict training.
- These conservation efforts help avoid critical habitat designation for the California red-legged frog and reduce the concentration of sensitive habitat on-post, lowering the likelihood of future training limitations.
- REPI investments also help maintain open space needed for vegetation management through grazing, which reduces wildfire risk. Large-scale wildfires, common in California, could destroy range infrastructure and halt training operations, making proactive habitat and fuels management essential to sustaining long-term mission capability.



KEY FISCAL YEAR MILESTONES AT CAMP SAN LUIS OBISPO*

2006



Camp San Luis Obispo launched its first REPI project in 2006 to proactively address incompatible development and protect the installation's long-term training capability.

2013



The installation completed the first conservation easement of 500 acres, which helped preserve open space and existing agriculture production.

* These milestones demonstrate how the installation is strategically utilizing the REPI Program to mitigate encroachment risks and enhance mission assurance. While not exhaustive, the list highlights the various approaches installations are using to preserve critical testing and training capabilities essential to national defense.



Subscribe to the REPI Program Listserv by scanning the QR code.
For more information about the REPI Program and supportive DOD efforts, please visit www.repi.mil.