



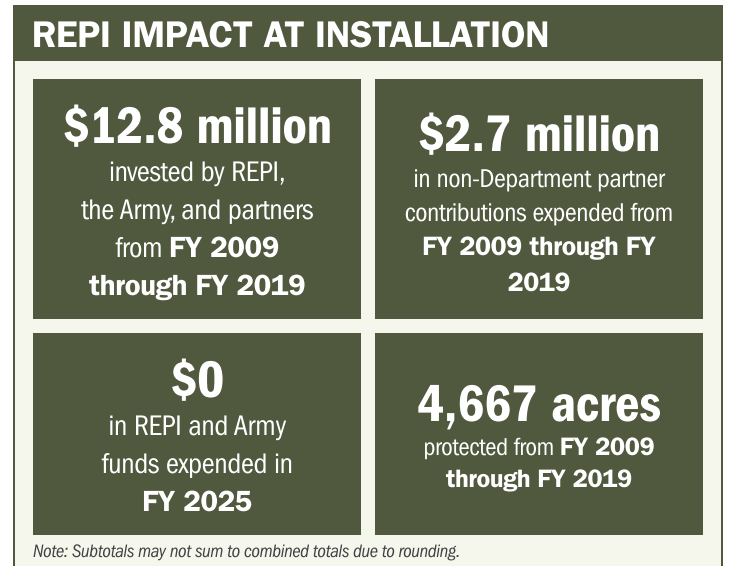
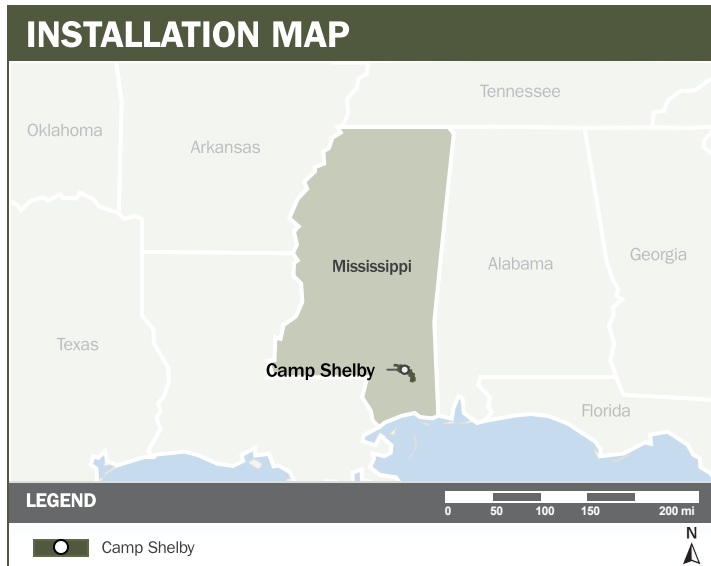
CAMP SHELBY

ABOUT THE INSTALLATION

Camp Shelby is the largest state-owned and operated field training site in the United States, spanning 134,000 acres, and serves as the primary mobilization center for the Mississippi Reserve Component. The installation is located largely within the DeSoto National Forest, where the U.S. Forest Service manages a special use permit for military training activities. Camp Shelby supports the Joint Forces Training Center, Navy Seabee construction battalion field exercises, and training for multiple Services, Federal agencies, and state and local partners.

STRENGTHENING MISSION READINESS THROUGH REPI INVESTMENTS

The Department of War (DoW) Readiness and Environmental Protection Integration (REPI) Program has played a critical role in supporting Camp Shelby's long-term operational success. Through strategic land conservation and partnership-driven investments, REPI funding has helped prevent incompatible development, preserve training flexibility, and maintain mission-critical capabilities beyond the installation boundary. These efforts ensure Camp Shelby can continue supporting high-tempo mobilization, joint training, and interagency readiness activities essential to national defense.



PROJECT OVERVIEW

INCOMPATIBLE DEVELOPMENT—10 U.S.C. § 2684A

- Camp Shelby is located adjacent to the city limits of Hattiesburg, near a municipal airport and three major highways. Encroachment threats along the northern boundary are increasing due to rapid residential and commercial growth in Hattiesburg and Perry County.
- Development pressures on the western and northern boundaries pose risks to Camp Shelby's ability to conduct training and fully utilize restricted airspace for fixed wing, rotary wing, and unmanned aircraft operations. Continued expansion in surrounding communities increases the likelihood of noise, safety, and airspace conflicts that can constrain mission activities.





CAMP SHELBY

PROJECT OVERVIEW (CONTINUED)

- To protect an assault landing airstrip, tank maneuver sites, and artillery and weapons firing ranges, Camp Shelby is leveraging the REPI Program funds under 10 U.S.C. § 2684a to preserve surrounding land. Preventing incompatible development helps the installation avoid conflicts related to airspace, safety, noise, and smoke, ensuring long-term training flexibility.

KEY FISCAL YEAR MILESTONES AT CAMP SHELBY*

2007 First REPI project established to begin protecting key training lands from incompatible development.

2017 Conserved nearly 500 acres of land that is a prime landscape for longleaf restoration, which in turn provides additional habitat for gopher tortoise, black pine snake, and red-cockaded woodpecker.

2021 Project completed, marking the successful conclusion of Camp Shelby's initial REPI effort.

* These milestones demonstrate how the installation is strategically utilizing the REPI Program to mitigate encroachment risks and enhance mission assurance. While not exhaustive, the list highlights the various approaches installations are using to preserve critical testing and training capabilities essential to national defense.



Subscribe to the REPI Program Listserv by scanning the QR code.
For more information about the REPI Program and supportive DoW efforts, please visit www.repi.mil.