



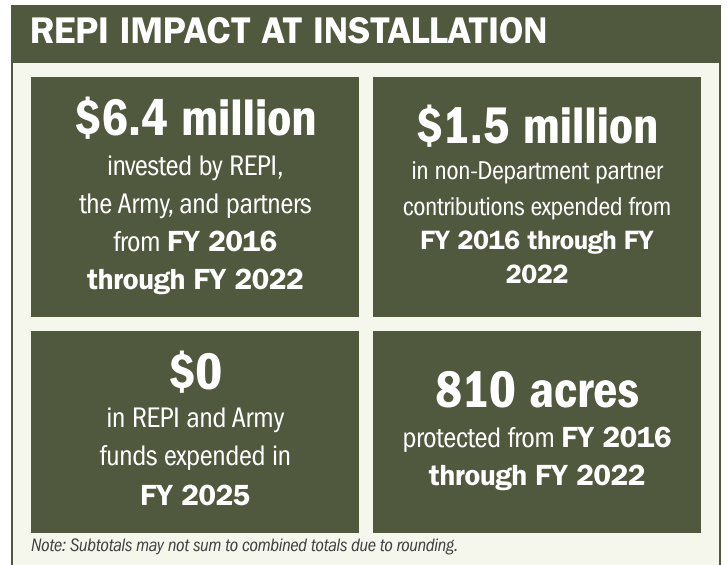
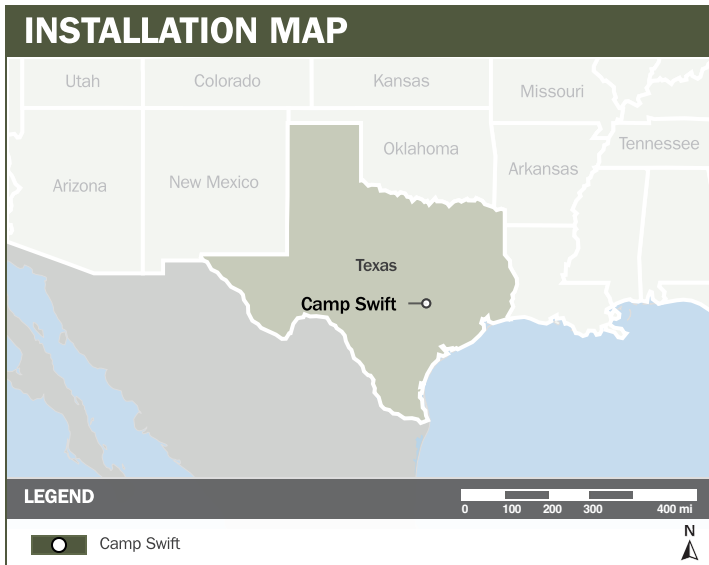
# CAMP SWIFT

## ABOUT THE INSTALLATION

Camp Swift is the primary site for pre-mobilization training for the Texas Army National Guard, which maintains the largest National Guard contingent in the United States. Approximately 90 percent of the Texas Military Forces, including the Air National Guard and Texas State Guard, train at Camp Swift prior to deployment. The installation also supports training for other military branches, Federal agencies, and state and local forces, making it a critical regional hub for readiness and interagency coordination.

## STRENGTHENING MISSION READINESS THROUGH REPI INVESTMENTS

The Department of War (DoW) Readiness and Environmental Protection Integration (REPI) Program has played a critical role in supporting Camp Swift's long-term operational success. Through strategic land conservation and partnership-driven investments, REPI funding has helped prevent incompatible development, preserve training flexibility, and sustain critical capabilities beyond the installation boundary.



## PROJECT OVERVIEW

### INCOMPATIBLE DEVELOPMENT—10 U.S.C. § 2684A

- Supporting a broad spectrum of training activities for such large contingents requires more ranges and maneuvering land than Camp Swift currently has available. With a shortfall of 107,000 acres of training land, it is essential that the installation lose no additional training grounds in order to sustain troop readiness.
- Population growth, urban sprawl, and expanding development threaten Camp Swift's military operations and mission. Incompatible development generates noise, smoke, and training-related complaints that can temporarily halt operations and lead to future land-use restrictions. Smoke management and controlled burns are already limited in several areas during conditions likely to trigger community concerns, reducing training flexibility.





# CAMP SWIFT

## PROJECT OVERVIEW (CONTINUED)

- To address these threats, Camp Swift is leveraging REPI Program authority under 10 U.S.C. § 2684a to preserve working farmland and forests in the surrounding landscape. Maintaining these lands reduces the risk of complaints about noise, dust, and smoke from live-fire ranges, demolition activities, and drop zones, while also limiting light pollution that affects realistic dark-sky training.

## KEY FISCAL YEAR MILESTONES AT CAMP SWIFT\*

**2016** First REPI project established to begin protecting key training lands from incompatible development.

**2022** Completed a 100-acre easement near existing development to protect installation infrastructure and assets.

**2022** Project completed, marking the successful conclusion of Camp Swift's initial REPI effort.

\* These milestones demonstrate how the installation is strategically utilizing the REPI Program to mitigate encroachment risks and enhance mission assurance. While not exhaustive, the list highlights the various approaches installations are using to preserve critical testing and training capabilities essential to national defense.



Subscribe to the REPI Program Listserv by scanning the QR code.  
For more information about the REPI Program and supportive DOD efforts, please visit [www.repi.mil](http://www.repi.mil).