



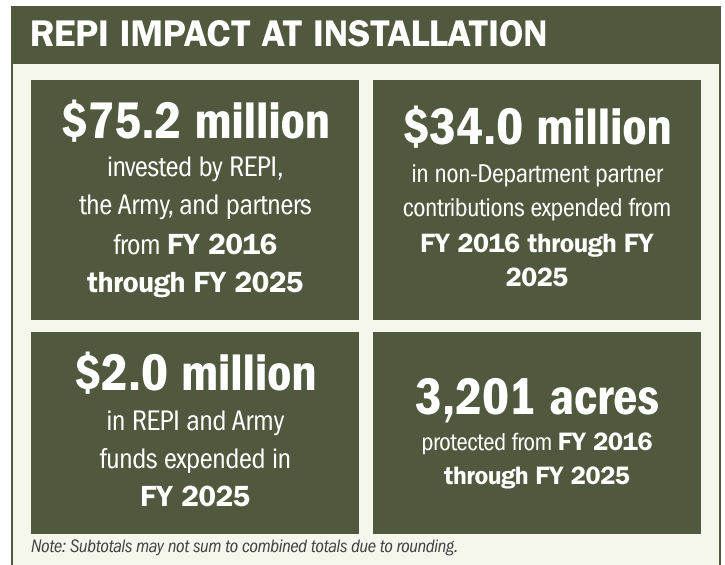
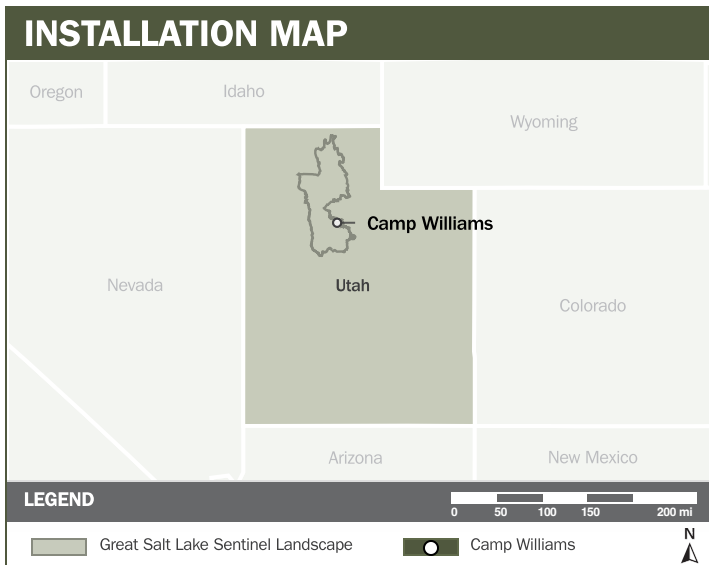
# CAMP WILLIAMS

## ABOUT THE INSTALLATION

Camp Williams, located in Utah within the Great Salt Lake Sentinel Landscape, encompasses 23,850 acres of combat training areas in desert and mountain terrain similar to environments encountered in overseas operations. The installation supports year-round, defense-focused training across all U.S. military branches. Operated by the Utah Army National Guard, Camp William is the primary site for preparing home-station units, including a fire brigade, an attack aviation battalion, a maneuver enhancement brigade, a military intelligence brigade, and Marine light infantry, combat engineer, and military police companies.

## STRENGTHENING MISSION READINESS THROUGH REPI INVESTMENTS

The Department of War (DoW) Readiness and Environmental Protection Integration (REPI) Program has played a critical role in supporting Camp William’s long-term operational success. Through strategic land conservation and partnership-driven investments, REPI funding has helped prevent incompatible development, preserve training flexibility, and sustain critical capabilities beyond the installation boundary.



## PROJECT OVERVIEW

### INCOMPATIBLE DEVELOPMENT—10 U.S.C. § 2684A

- Camp Williams’ national defense mission requires unrestricted maneuver space and live-fire flexibility; however, rapid regional growth is pushing incompatible development to the installation boundary and constraining essential training.
- Incompatible development is degrading key training capabilities, including small-arms and crew-served weapons ranges, maneuver and construction training areas, the austere airfield, artillery and mortar firing points, man-portable rocket, grenade, and demolition ranges, and urban combat sites.
- Through REPI authorities under 10 U.S.C. § 2684a, Camp Williams is protecting critical training land to secure key corridors, prevent incompatible development, and sustain readiness.





# CAMP WILLIAMS

## PROJECT OVERVIEW (CONTINUED)

### INSTALLATION RESILIENCE—10 U.S.C. § 2684A

- Camp Williams faces persistent wildfire risk driven by dry weather patterns, dense fuels, and rugged terrain, with high-intensity fires frequently ignited by lightning or live-fire training. These conditions result in an average loss of 27 training days per year, directly reducing readiness.
- Despite existing firebreak roads and mitigation measures, past fires have spread into neighboring communities, damaging homes and forcing evacuations—an issue intensified as urban development now reaches the installation fence line.
- REPI investments help maintain a buffer of compatible land uses that protect military training in perpetuity, add critical layers of wildfire defense to reduce community risk and prevent lost training days, safeguard habitat for encroaching species, and preserve open space that can support future recreation access.



## KEY FISCAL YEAR MILESTONES AT CAMP WILLIAMS\*

2016

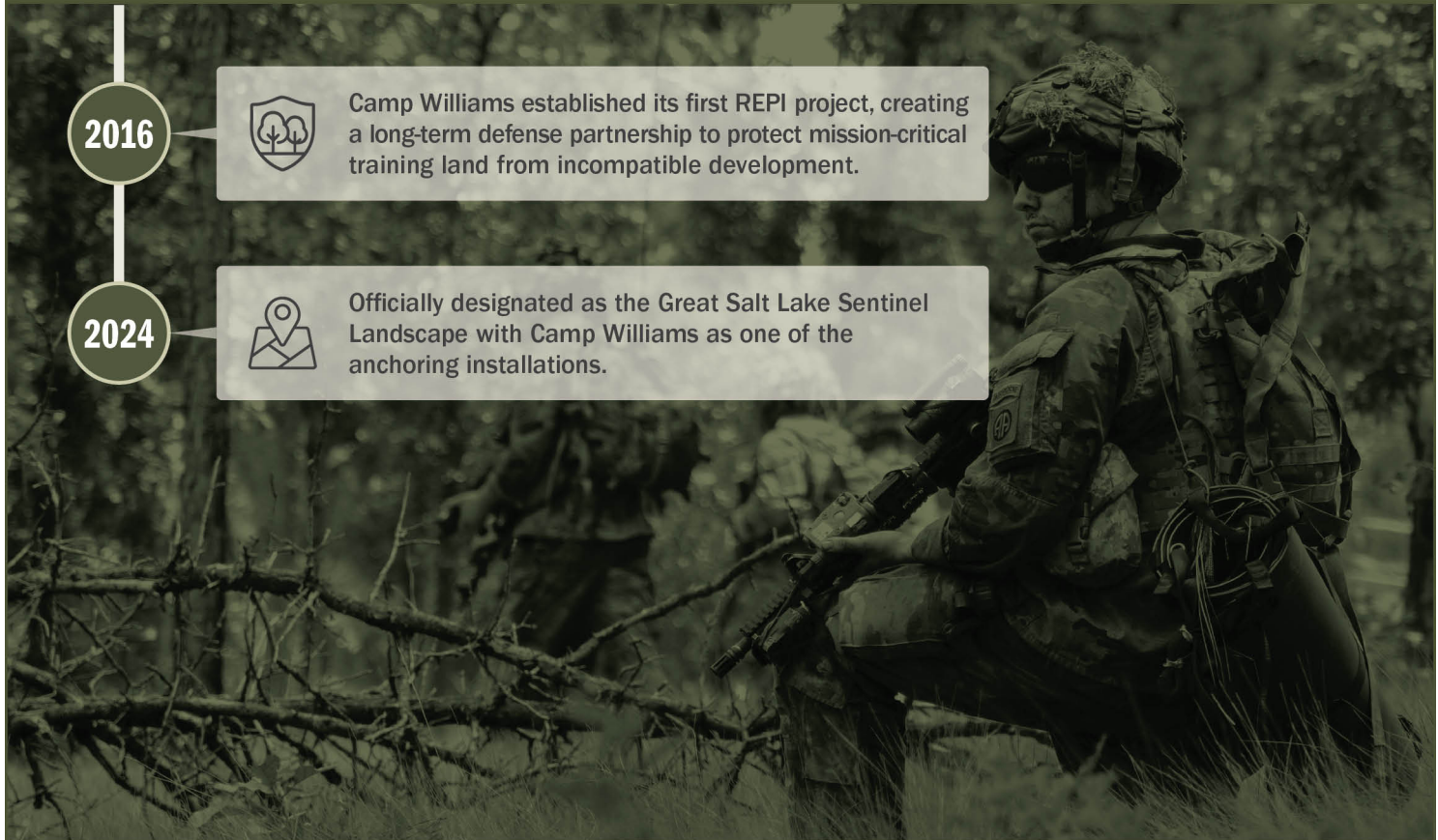


Camp Williams established its first REPI project, creating a long-term defense partnership to protect mission-critical training land from incompatible development.

2024



Officially designated as the Great Salt Lake Sentinel Landscape with Camp Williams as one of the anchoring installations.



\* These milestones demonstrate how the installation is strategically utilizing the REPI Program to mitigate encroachment risks and enhance mission assurance. While not exhaustive, the list highlights the various approaches installations are using to preserve critical testing and training capabilities essential to national defense.



Subscribe to the REPI Program Listserv by scanning the QR code.  
For more information about the REPI Program and supportive DOD efforts, please visit [www.repi.mil](http://www.repi.mil).