



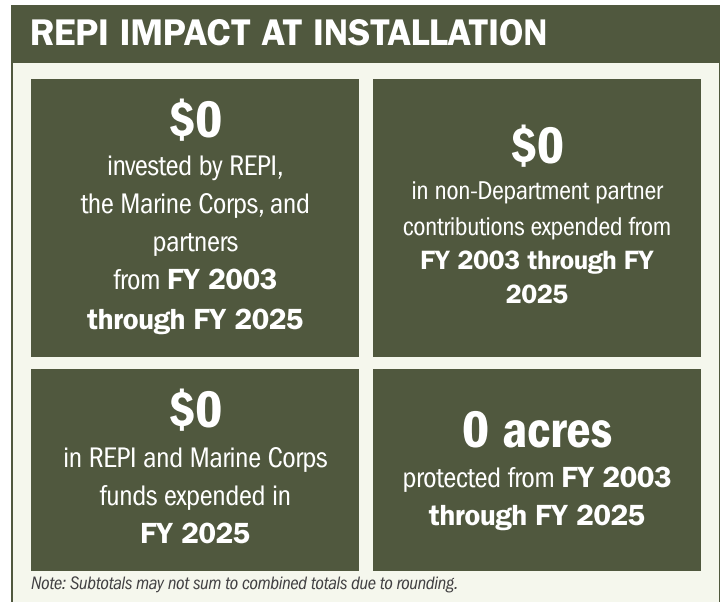
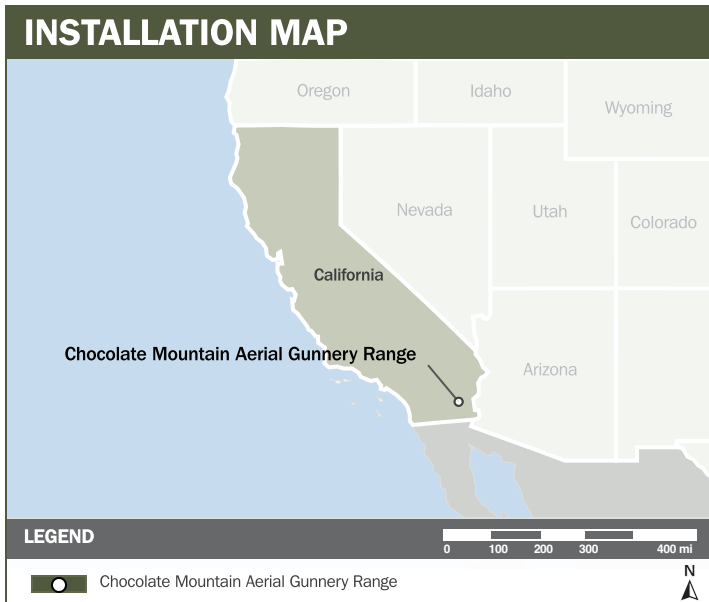
CHOCOLATE MOUNTAIN AERIAL GUNNERY RANGE

ABOUT THE INSTALLATION

The Chocolate Mountain Aerial Gunnery Range (CMAGR) is a 458,267-acre range location in southern California that supports United States Marine Corps training in mission essential tasks such as close air support missions, laser system operations, and air-to-ground bombing. Due to its large size and unique landscape, the CMAGR is able to support a myriad of mission types, making it a critical U.S. Marine Corps and DoW training asset. The CMAGR is managed by Marine Corps Air Station (MCAS) Yuma and includes Camp Billy Machen, which supports special operations forces training.

STRENGTHENING MISSION READINESS THROUGH REPI INVESTMENTS

The DoW's Readiness and Environmental Protection Integration (REPI) Program has played a critical role in supporting CMAGR's long-term operational success. Through strategic land conservation and partnership-driven investments, REPI funding has helped preserve unimpeded access to CMAGR's range and training areas by preventing incompatible development in high noise areas, deterring airspace obstructions, and supporting continued unimpeded approach and departure patterns for air-to-ground training.



PROJECT OVERVIEW

INCOMPATIBLE DEVELOPMENT—10 U.S.C. § 2684A

- To provide realistic air-to-ground training, CMAGR requires unobstructed air-to-ground approach corridors, a mission-critical requirement increasingly threatened by regional development pressures.
- Residential and commercial growth around the installation introduces risks such as noise conflicts, aircraft avoidance areas, restricted approach corridors, and limitations on future mission expansion, including explosive safety quantity-distance arcs. These encroachment pressures directly affect CMAGR's ability to support high-tempo aviation operations and multi-axis attack profiles essential for combat-credible training.



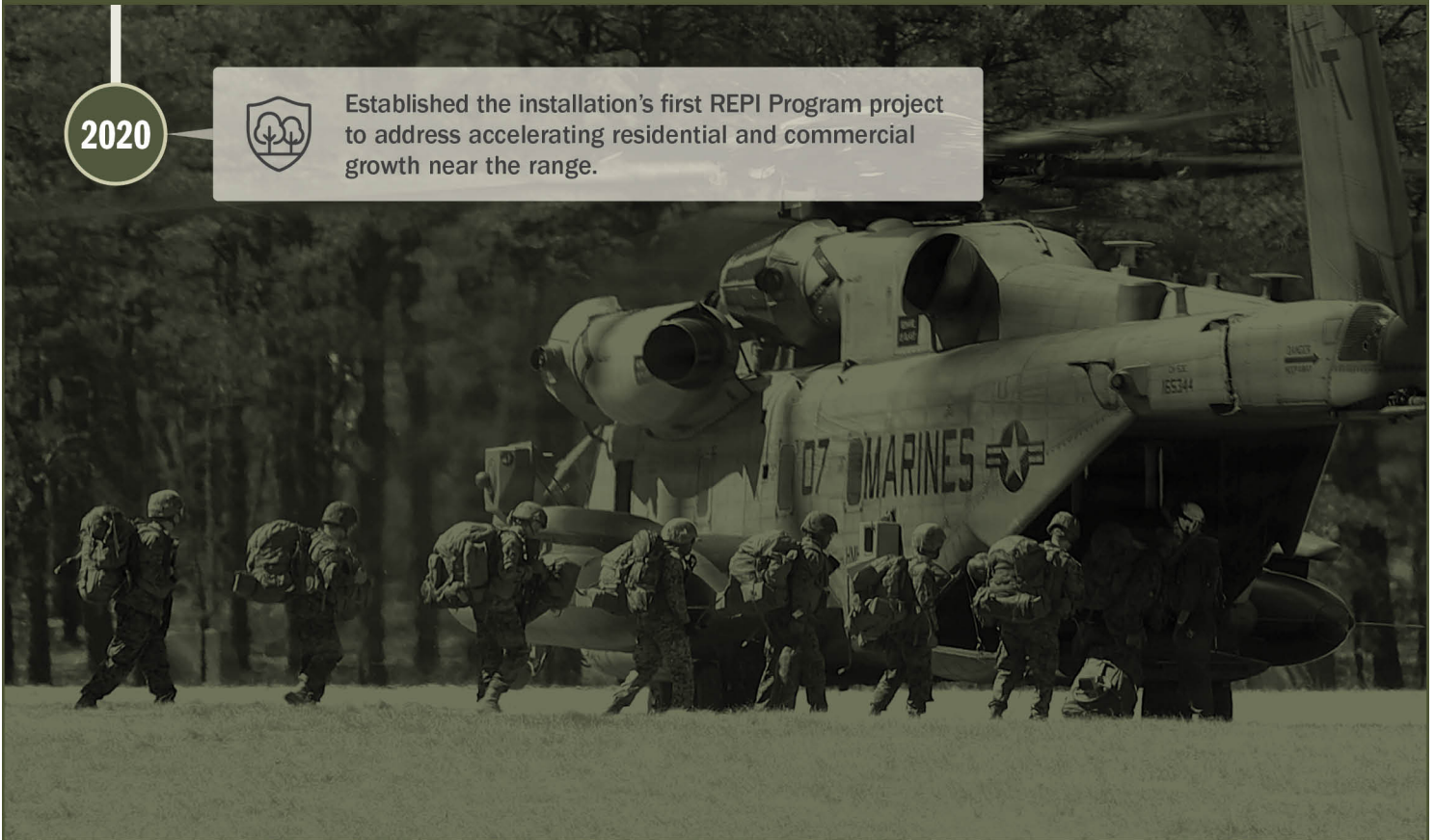


CHOCOLATE MOUNTAIN AERIAL GUNNERY RANGE

PROJECT OVERVIEW (CONTINUED)

- To reduce these risks, CMAGR is leveraging REPI Program funding under 10 U.S.C. § 2684a to secure conservation or restrictive-use easements that limit incompatible development, protect aviation access, and sustain the full spectrum of military operations conducted at the installation. The project will also protect the Mojave Desert tortoise to avoid additional restrictions to training.

KEY FISCAL YEAR MILESTONES AT CHOCOLATE MOUNTAIN AERIAL GUNNERY RANGE*



* These milestones demonstrate how the installation is strategically utilizing the REPI Program to mitigate encroachment risks and enhance mission assurance. While not exhaustive, the list highlights the various approaches installations are using to preserve critical testing and training capabilities essential to national defense.



Subscribe to the REPI Program Listserv by scanning the QR code.
For more information about the REPI Program and supportive DOD efforts, please visit www.repi.mil.