



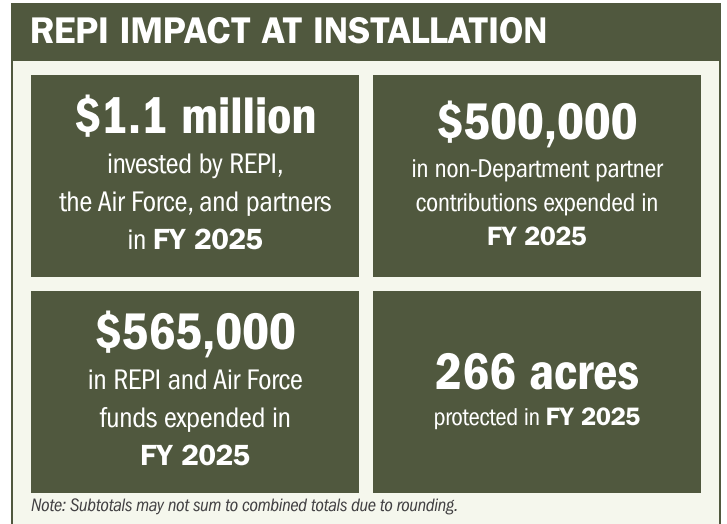
# COLUMBUS AFB

## ABOUT THE INSTALLATION

Columbus Air Force Base (AFB) is home of the 14th Flying Training Wing of Air Education and Training Command's 19th Air Force. The Wing's mission focuses on specialized undergraduate pilot training in the T-6 Texan II, T-38C Talon and T-1A Jayhawk aircraft. Each day the Wing flies an average of 260 sorties on its three parallel runways. In addition to the flying training mission, Columbus AFB sustains a force of more than 900 highly trained individuals capable of deploying at a moment's notice to support worldwide taskings and contingencies.

## STRENGTHENING MISSION READINESS THROUGH REPI INVESTMENTS

The Department of War's (DoW) Readiness and Environmental Protection Integration (REPI) Program has played a critical role in supporting Columbus AFB's long-term operational success. Through strategic land conservation and partnership-driven investments, REPI coordination and Military Service funding have helped prevent incompatible development, preserve training flexibility, and sustain critical capabilities beyond the installation boundary.



## PROJECT OVERVIEW

### INCOMPATIBLE DEVELOPMENT—10 U.S.C. § 2684A

- Existing incompatible residential development near aircraft takeoff and landing areas is already generating public safety hazards and hindering mission execution at the installation. Additionally, anticipated future residential and commercial development in the surrounding area further elevates risks to operational readiness and flight safety.
- Columbus AFB is prioritizing the acquisition of land with the highest potential for mission impacts, including accident potential zones, through restrictive use easements. These actions reduce incompatible residential and commercial development pressures and strengthen buffers that safeguard mission assurance.



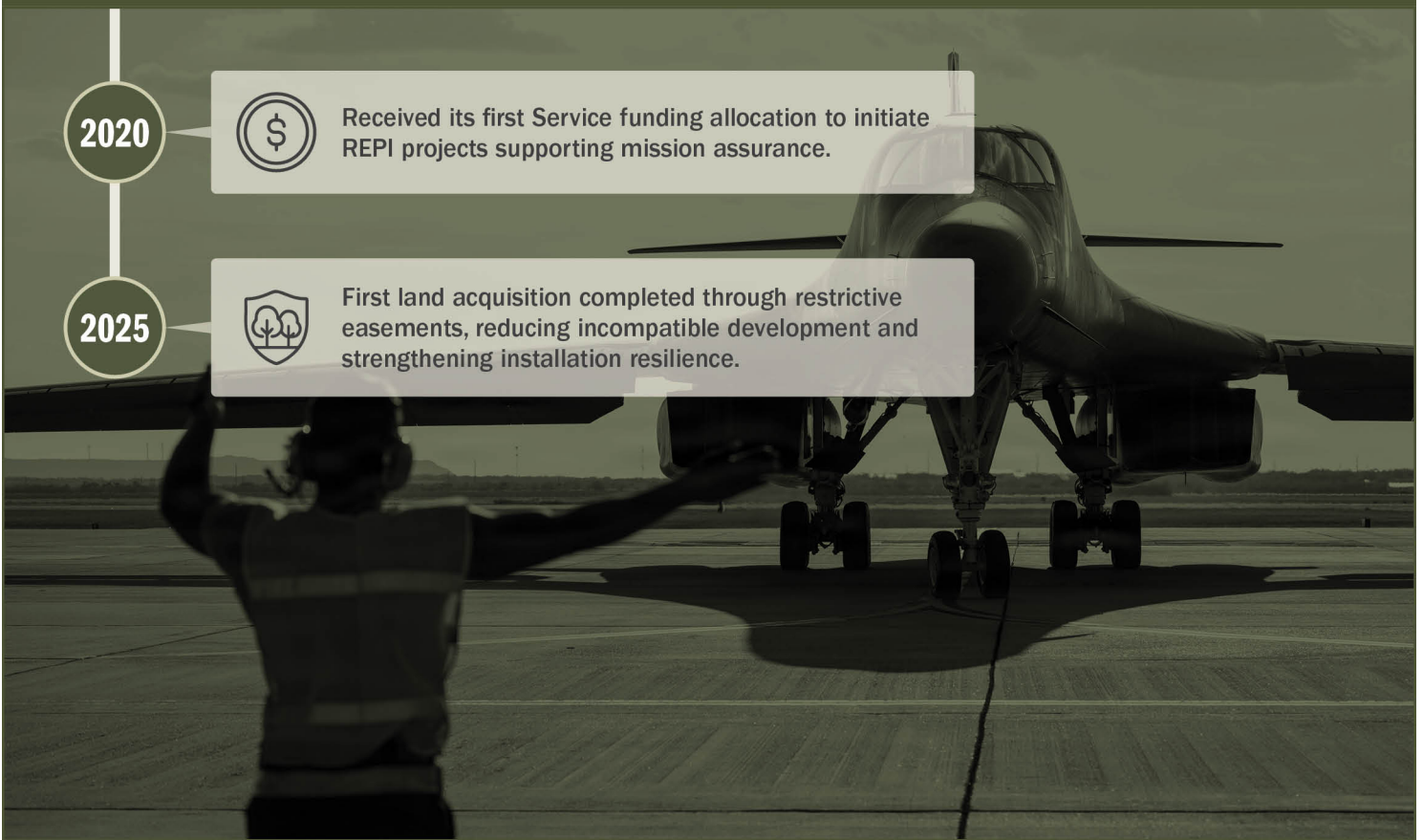


# COLUMBUS AFB

## PROJECT OVERVIEW (CONTINUED)

- The protected area around the installation also delivers ecosystem services such as water purification and habitat for endangered species, including the northern Long-eared Bat and Red-cockaded Woodpecker. Preserving these areas reduces the likelihood of species encroachment within installation boundaries, thereby minimizing environmental restrictions and ensuring uninterrupted training and operations.

## KEY FISCAL YEAR MILESTONES AT COLUMBUS AFB\*



\* These milestones demonstrate how the installation is strategically utilizing the REPI Program to mitigate encroachment risks and enhance mission assurance. While not exhaustive, the list highlights the various approaches installations are using to preserve critical testing and training capabilities essential to national defense.



Subscribe to the REPI Program Listserv by scanning the QR code.  
For more information about the REPI Program and supportive DoW efforts, please visit [www.repi.mil](http://www.repi.mil).