



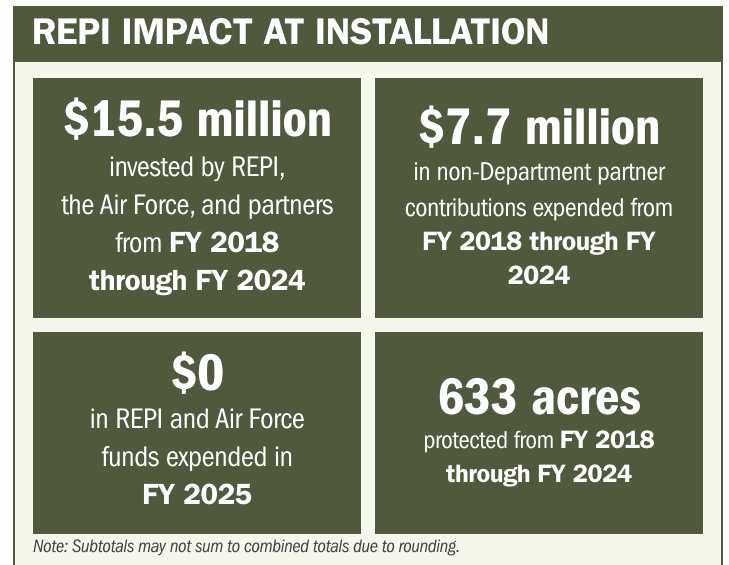
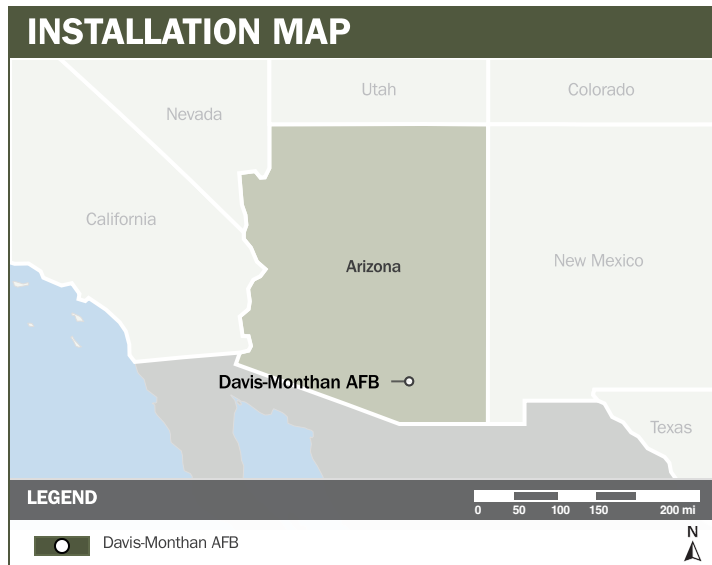
# DAVIS-MONTHAN AFB

## ABOUT THE INSTALLATION

Davis-Monthan AFB (DMAFB), located in Tucson, Arizona, is home to the 12th Air Force, the 214th Reconnaissance Group, and the 309th Aerospace Maintenance and Regeneration Group (AMARG), better known as the “Boneyard”, responsible for managing more than 4,500 aircraft in storage or undergoing retrofitting. AMARG and other missions leverage the base’s 13,645-foot runway—one of the longest in the Air Force—which can accommodate any aircraft in the Air Force inventory. DMAFB is also critical to homeland defense, with its Arizona Air National Guard maintaining a 24/7 alert mission to ensure aerospace control across a 225,000-square-mile area spanning six states.

## STRENGTHENING MISSION READINESS THROUGH REPI INVESTMENTS

The Department of War’s (DoW) Readiness and Environmental Protection Integration (REPI) Program has played a critical role in supporting DMAFB’s long-term operational success. Through strategic land conservation and partnership-driven investments, REPI funding has helped prevent incompatible development, preserve training flexibility, and sustain critical capabilities beyond the installation boundary.



## PROJECT OVERVIEW

### INCOMPATIBLE DEVELOPMENT—10 U.S.C. § 2684A

- Encroachment has forced 90% of all approaches and departures to the southeast, while approximately 20% of live-munitions sorties are constrained by wind shifts that would normally require northwest takeoff, directly impacting training flexibility and mission assurance.
- DMAFB is working with state and local governments through programs such as the Air Force Community Partnership to reduce and ultimately eliminate encroachment. Partner efforts focus on adopting restrictive land-use and development compatibility policies, as well as securing restrictive-use easements, to safeguard operational readiness.



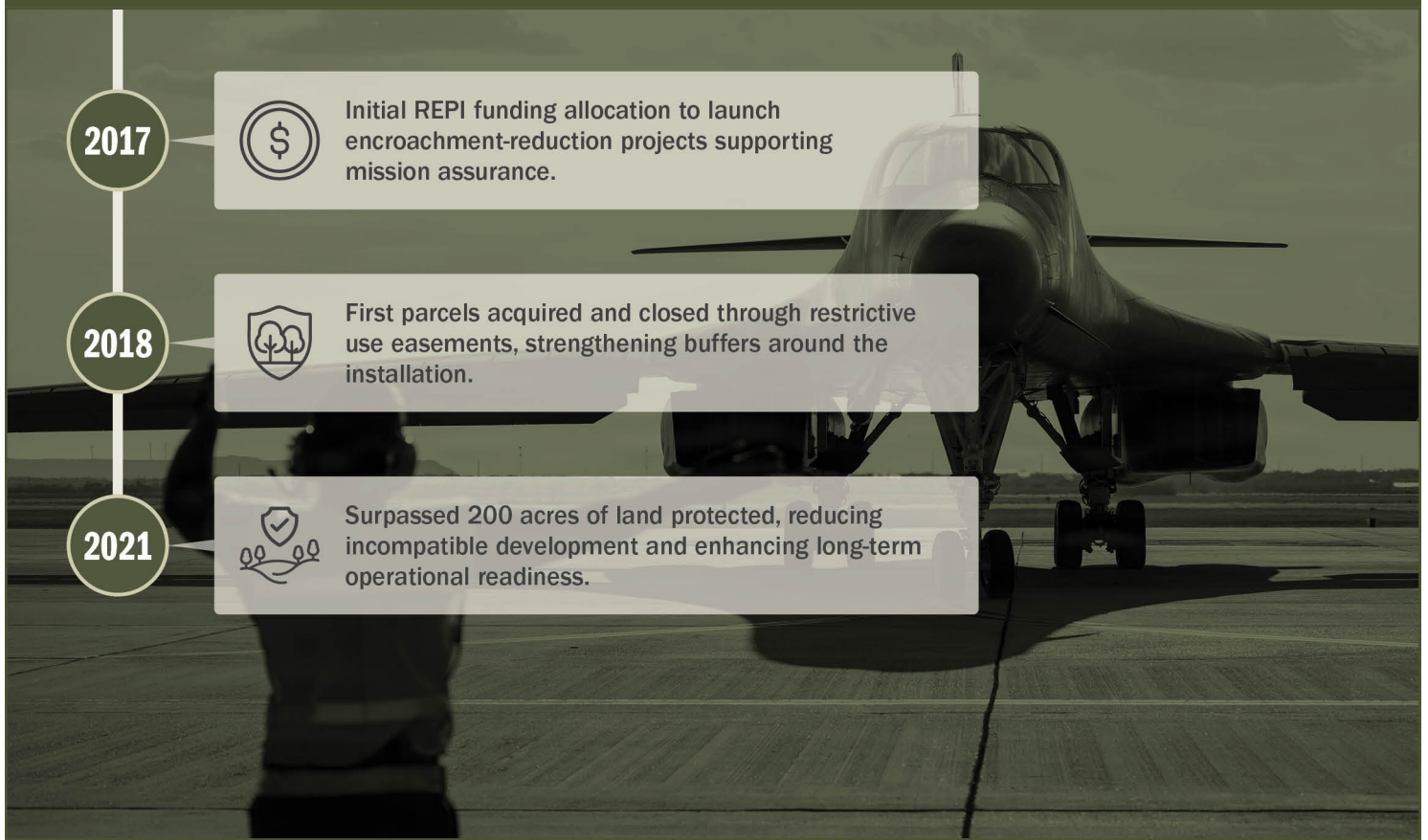


# DAVIS-MONTHAN AFB

## PROJECT OVERVIEW (CONTINUED)

- Pima County is partnering with DMAFB to identify compatible uses for undeveloped lands surrounding the installation, maintaining natural desert areas, grasslands, and habitat buffers. These combined efforts will enhance mission resilience while benefiting local residents through reduced noise exposure and improved public safety.

## KEY FISCAL YEAR MILESTONES AT DAVIS MONTHAN AFB\*



\* These milestones demonstrate how the installation is strategically utilizing the REPI Program to mitigate encroachment risks and enhance mission assurance. While not exhaustive, the list highlights the various approaches installations are using to preserve critical testing and training capabilities essential to national defense.



Subscribe to the REPI Program Listserv by scanning the QR code.  
For more information about the REPI Program and supportive DoW efforts, please visit [www.repi.mil](http://www.repi.mil).