



DOD'S REPI PROGRAM FY 2023 INVESTMENTS IN THE PACIFIC REGION

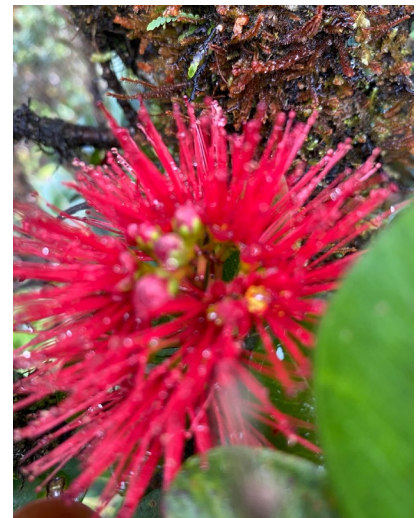
The Department of Defense (DOD)'s Readiness and Environmental Protection Integration (REPI) Program facilitates long-term, collaborative partnerships that improve resilience, preserve important habitats and natural resources, and support sustainable and productive land uses and water resources for their surrounding communities. For the Pacific islands, these partnerships are critical to the Department serving as both a trusted neighbor, and steadfast steward of native cultures and irreplaceable ecosystems.

As the Pacific region grows in strategic significance for national defense, REPI projects become increasingly essential to ensure greater conservation and protection of cultural and natural resources for communities that neighbor DOD facilities. **In Fiscal Year 2023, the REPI Program has committed nearly \$34 million in funding to support REPI Program projects and REPI Challenge projects across Hawai'i and Guam.** These important projects leverage significant partner contributions and investments from other federal agency conservation and resilience programs.

REPI PROGRAM PROJECTS

Through the REPI Program, the Military Services can enter into cost-sharing agreements with state and local governments and conservation organizations. REPI projects are developed in partnership with a non-governmental organization (NGO) or state or local government partner and submitted through the appropriate Military Service to the REPI office by local installation staff.

FY 2023: Guam: \$4.0M Hawai'i: \$16.7M Total: \$20.7M



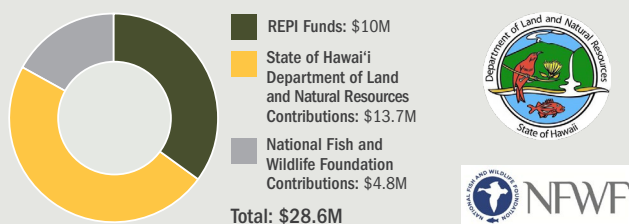
Blossom of 'ōhi'a lehua tree, endemic to Hawai'i.

REPI CHALLENGE PROJECTS

The REPI Program designed the REPI Challenge to help meet its ambitious conservation goals while aiming to cultivate new projects, harness creativity, and preserve military capabilities. REPI Challenge projects are introduced by partners, who work in collaboration with military natural resource management staff to develop large-scale conservation projects and submitted directly to the REPI office.

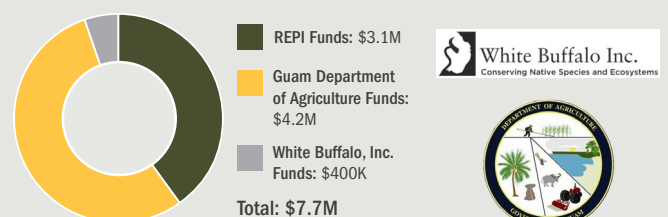
FY 2023: Guam: \$3.1M Hawai'i: \$10.0M Total: \$13.1M

2023 REPI CHALLENGE PROJECTS IN HAWAII



More information on the Hawai'i REPI Challenge is available [here](#).

2023 REPI CHALLENGE PROJECTS IN GUAM



More information on the Guam REPI Challenge is available [here](#).

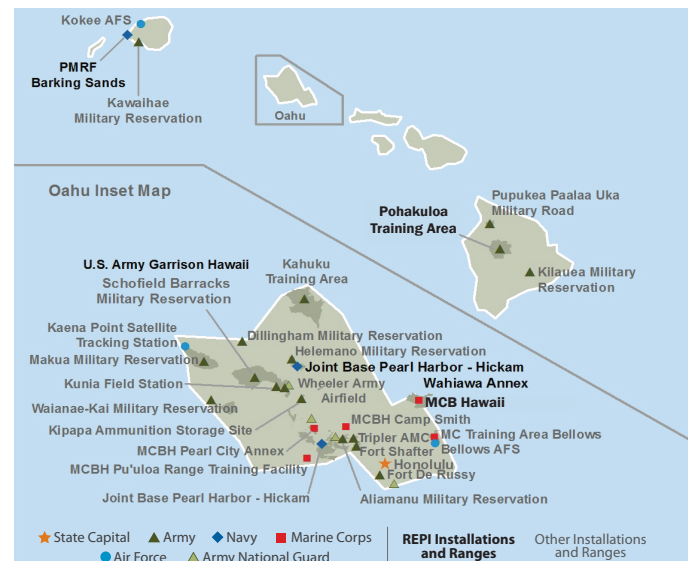
LEVERAGING FEDERAL CONSERVATION AND RESTORATION INVESTMENTS IN THE PACIFIC REGION

Partnerships among DOD and its federal partners are a key component of the REPI Program that help sustain installations' operations and resilience. These partnerships fund projects that seek to enhance habitats and increase climate resilience, which can promote military readiness in shared geographic focus areas. For example, one of the REPI Program's partners, the National Fish and Wildlife Foundation, awarded over \$9.5 million in federal grants to Hawai'i and Guam partners to support climate resilience and enhanced natural resource conservation efforts. This total only reflects projects executed through the America the Beautiful Challenge and the National Coastal Resilience Fund. NFWF has [several other active programs](#) that can support species and conservation strategies in the Pacific.



FY 2023 REPI PROGRAM PROJECTS IN HAWAII

Hawaii is home to the Pacific component commands for the U.S. Army, Navy, Air Force, Marine Corps, and Space Force, and combat ready land, sea, and air forces. U.S. DOD installations include Joint Base Pearl Harbor Hickam (JBPHH), U.S. Army Garrison Hawaii (USAG-HI) (including Pōhakuloa Training Area), Marine Corps Base Hawaii (MCBH), Pacific Missile Range Facility (PMRF), and incorporated annexes. Due to its biodiversity, Hawaii is home to the largest number of listed species in the U.S., while its geographic location places many installations, ranges, and their neighboring coastal communities at risk due to climate change and extreme weather events. In response, the REPI Program strives to collaborate with environmental and cultural stewards across the islands to support critical and ongoing conservation and resilience efforts.



KEY REPI PROGRAM PARTNERS

- AES Hawai'i, Inc.
- American Bird Conservancy
- City and County of Honolulu
- City and County of Kaua'i
- Department of Hawaiian Home Lands
- Hawai'i Land Trust
- Hawai'i Agribusiness Development Corporation
- Kua'aina Ulu'auamo
- MA'O Organic Farms
- National Fish and Wildlife Foundation
- National Oceanic and Atmospheric Administration
- North Shore Community Land Trust
- State of Hawai'i Agribusiness Development Corporation
- State of Hawai'i Division of Forestry and Wildlife
- The Trust for Public Land
- U.S. Department of Agriculture—Natural Resources Conservation Service
- U.S. Fish and Wildlife Service

2023 REPI PROGRAM PROJECTS IN HAWAII

2023 REPI Program Projects	FY 2023 REPI Program Funds
USAG-HI: Hono'uli'uli Forest Reserve Project (O'ahu): Reduces risk to endangered species and improves water recharge to the Pearl Harbor aquifer.	\$1.5M
USAG-HI Pōhakuloa Training Area: Nāpu'u Wildland Fire Management Project (Hawai'i Island): Fire planning reduces fire risk to nine threatened and endangered and 15 at-risk species while providing critical habitat restoration.	\$525,000
USAG-HI Pōhakuloa Training Area: Palila Critical Habitat Protection Project (Hawai'i Island): Provides off-site protection for critical habitat for the endangered Palila bird within the Department of Hawaiian Homelands 'Āina Mauna lands and adjacent Mauna Kea Forest Reserve.	\$1M
USAG-HI Pōhakuloa Training Area: Nāpu'u and Mauna Kea Invasive Species Management Project (Hawai'i Island): Reduces the impact of invasive species on native dryland forests and offers protection of native ecosystems on Mauna Kea.	\$380,000
MCBH: Maunawili Project (O'ahu): Prioritizes watershed improvement and protection of indigenous species and culturally significant archeological sites within Maunawili Forest & Lo'i.	\$5.6M
JBPHH: Forest/Watershed Protection Project Above Pearl Harbor (O'ahu): The second phase of a \$14 million 2022 REPI Challenge project which focuses on native forest management and priority weed control to replenish ground water supply to the Pearl Harbor Aquifer.	\$1.6M
JBPHH: Lualualei Annex Buffer Project (O'ahu): 24-acre project establishes a restrictive use easement and increases farmable acreage while providing affordable worker housing.	\$1M
JBPHH: Wahiawā Annex Buffer Project (O'ahu): 230-acre project establishes a restrictive use easement to protect groundwater and water quality for JBPHH while protecting resident threatened and endangered species.	\$1.7M
PMRF: Forest/Watershed Protection Project Above Mānā Plain (Kaua'i): Reduces upland flood potential, soil erosion, and wildfire potential while restoring habitat for endangered seabirds.	\$4.1M (to DLNR); \$1M (to KAA)

For all REPI Hawai'i project profiles through FY 2022 visit: www.repi.mil/Portals/44/Documents/State_Packages/Hawaii_ALLFacts.pdf

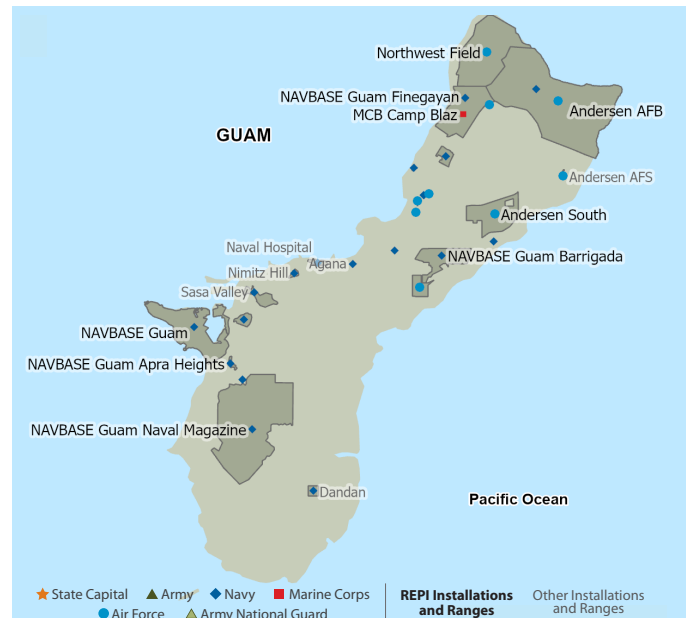


FY 2023 REPI PROGRAM PROJECTS IN GUAM

Guam, the southernmost island in the Mariana Archipelago, is home to several U.S. DOD installations and annexes whose missions align closely with National Defense Strategy priorities. These facilities include Naval Base Guam, Naval Munitions Site, Andersen Air Force Base, and the newly reactivated Marine Corps Base Camp Blaz. These important missions face development pressures, climate-related threats, and continued degradation of critical habitats for threatened and endangered species. To mitigate these threats, the REPI Program is working alongside the Government of Guam, federal agencies, and NGOs to implement the recovery and restoration of native ecosystems and the preservation of cultural resources.

KEY REPI PROGRAM PARTNERS

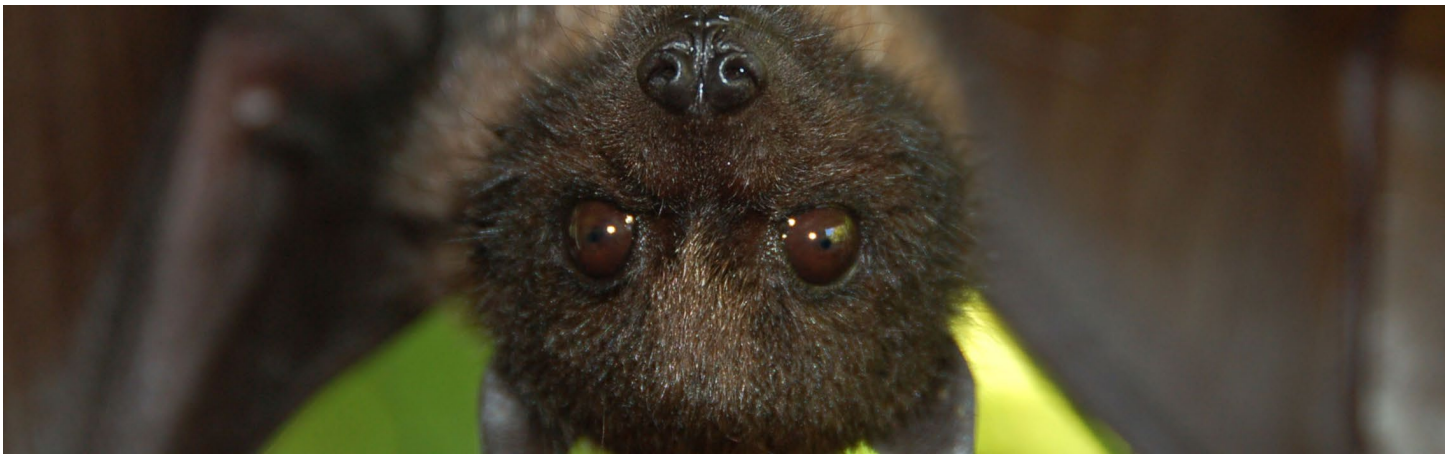
- Guam Department of Agriculture
- Guam Preservation Trust
- National Fish and Wildlife Foundation
- U.S. Fish and Wildlife Service
- White Buffalo, Inc.



2023 REPI PROGRAM PROJECTS IN GUAM

2023 REPI Program Project	FY 2023 REPI Program Funds
Guam Region-Wide Navy Project: This project supports species recovery and forest restoration plans and provides benefits to important cultural resources on Guam.	\$4M

For all REPI Guam project profiles through FY 2022 visit: www.repi.mil/Portals/44/Documents/State_Packages/Guam_ALLFacts.pdf



The REPI Program and its partners are working to protect critical habitat for the endangered Mariana fruit bat, pictured above (credit: U.S. Fish and Wildlife Service).