



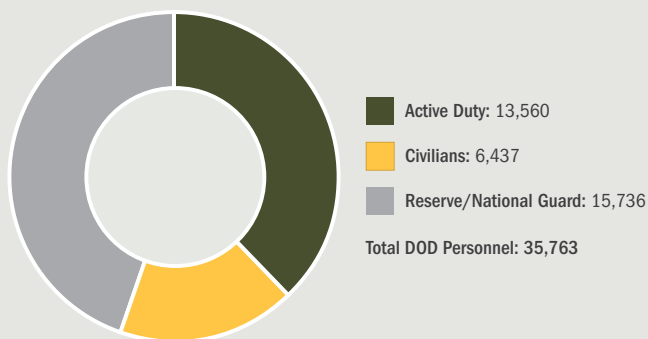
OVERVIEW

In Fiscal Year (FY) 2023, the state of Louisiana received \$4.0 billion in Defense spending, which provides direct funding for the Department of Defense (DOD) personnel salaries, defense contracts, and construction of military facilities in the state. This spending by DOD personnel, contractors, and their families creates significant economic activity, attracts related industries and investments, and generates important state and local government tax revenues.

The Readiness and Environmental Protection Integration (REPI) Program is a key tool used by DOD and its partners to protect the military's ability to train, test, and operate in the state. The Department created the REPI Program in response to the development of lands and loss of habitat in the vicinity of or affecting its installations, ranges, and airspace that can lead to restrictions or costly and inadequate training and testing alternatives. Through the REPI Program, DOD works with state and local governments, conservation organizations, and willing private landowners to address these challenges to the military mission and the viability of DOD installations and ranges. The REPI Program has benefited from broad bipartisan support both in the U.S. Congress and among groups representing state and local officials. From FY 2010 through FY 2024, DOD and its partners have contributed over \$12.3 million to REPI projects supporting two installations in Louisiana.

DOD IN LOUISIANA

DOD Personnel (as of 30 Sep 2023)



Federal Defense Spending and Economic Impact

(in FY 2023)



\$4.0 billion
in Federal
Defense
spending

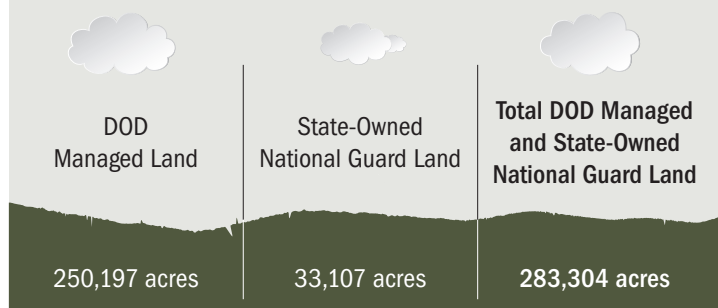


1.3%
of state Gross
Domestic
Product



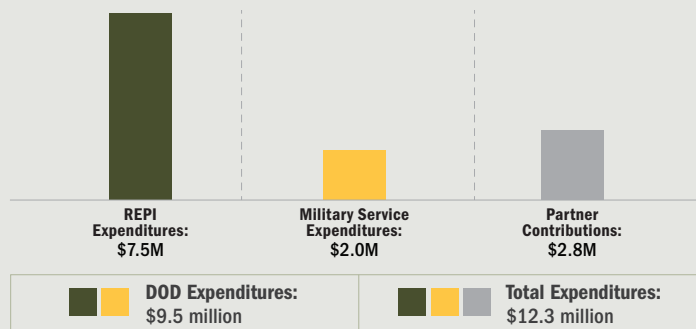
\$1.8 billion
in payroll contributed
\$2.1 billion
in contracts awarded

Acres of DOD Managed and State-Owned National Guard Land (as of 30 Sep 2023)



REPI PROJECTS* IN LOUISIANA

Funding Summary (from FY 2010 through FY 2024)



Subtotals may not sum to combined totals due to rounding.

* REPI projects refer to any action authorized by 10 U.S. Code (U.S.C.) § 2684a to include the acquisition of real property interests in land from willing landowners to prevent incompatible development or improve military installation resilience. REPI projects involving the Army or Army National Guard are also termed Army REPI partnerships. Those involving the Navy, Marine Corps, or Air Force, are also termed encroachment partnering agreements. Eligible entities include conservation organizations and state and local governments.

Total Acres Protected (FY 2010 through FY 2024): 1,757



MILITARY PRESENCE

- Military installations in Louisiana play a vital role in the state's economy, providing jobs and fostering community involvement. These installations secure both economic benefits and national freedom.
- The Louisiana Governor's Office reported that in Louisiana military-related activity provides more than **77,000 jobs** and pays almost \$280 million in state and local taxes.
- Other than the state government, the **first, fourth, and fifth largest employers** respectively are Fort Johnson, Barksdale Air Force Base, and the Naval Air Station Joint Reserve Base-New Orleans.
- The Marine Corps Support Facility-New Orleans, home of the Marine Forces Reserve and Marine Forces North Commands, which combined are the **largest commands in the United States Marine Corps**.
- Barksdale Air Force Base is home to the 2nd Bomb Wing, which is the **largest bomb wing in the Air Force**.
- Global Strike Command is **one of two bases that have B-52s** currently assigned.
- **Fort Johnson is supporting the war on terrorism** by providing contingency training for the Army's light infantry and special operations forces and by deploying home station and reserve component forces in support of Operations Enduring Freedom, Noble Eagle, and Iraqi Freedom.
- **More than 4,000 Army, Navy and Air Force personnel receive combat training** at the Joint Readiness Training Center each month.

REPI PROJECTS

Installation	County	Congressional District
Fort Johnson	Vernon Parish	4th
Naval Air Station Joint Reserve Base New Orleans	Plaquemines Parish	2nd

For all REPI Project Profiles visit: www.repi.mil/BufferProjects/ProjectList.aspx



Facilities at Naval Air Station Joint Reserve Base New Orleans provide the Navy with a diverse array of training venues (left and top).

Key REPI Partners

- Louisiana Department of Wildlife and Fisheries
- Plaquemines Parish
- State of Louisiana
- The Nature Conservancy
- The Trust for Public Land
- U.S. Fish and Wildlife Service

Data Sources

- **For Economic Impact Information:** Louisiana Economic Development, Military Economic Impact Analysis for the State of Louisiana, 2021: www.opportunitylouisiana.gov/wp-content/uploads/docs/led-military-impact-analysis-october-2021.pdf?Status=Temp&sfvrsn=f1aeb905_2
- **For Land Information:** Office of the Assistant Secretary of Defense for Sustainment, Real Property, Business Systems & Information Directorate: "Base Structure Report – FY24 Baseline" (as of 30 Sept 2023)
- **For Federal Spending and Personnel Information:** Office of Local Defense Community Cooperation: "Defense Spending by State – Fiscal Year 2023": www.oldcc.gov/dsbs-fy2023
- **For REPI Projects Information:** "2025 REPI Report to Congress": www.repi.mil/Portals/44/Documents/Reports_to_Congress/REPI2025RTC.pdf



REPI

UNITED STATES DEPARTMENT OF DEFENSE
READINESS AND ENVIRONMENTAL
PROTECTION INTEGRATION PROGRAM

PROJECT PROFILES

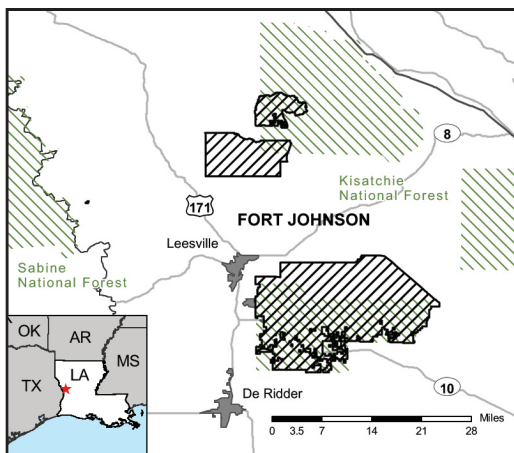
U.S. ARMY | LOUISIANA



FORT JOHNSON

Home of the Army's Joint Readiness Training Center (JRTC), Fort Johnson is located primarily in Louisiana's Kisatchie National Forest in a special use agreement with the U.S. Forest Service.

The installation supports training for deploying units, including special operations forces, in contingency missions. The JRTC provides highly realistic joint operations exercises that are vital for supporting forces in Iraq, Afghanistan, and other theaters.



Fort Johnson's location and surrounding ecosystem are critical to a host of species, especially the Louisiana pine snake, one of the rarest snake species in North America, and the red-cockaded woodpecker. The loss of longleaf pine habitat across the Gulf coastal plains of the Southeast has put increased pressure on the installation to act as one of the last bastions of viable habitat. Protecting this habitat can help prevent the listing of the pine snake under the Endangered

Species Act, which has the potential to impose significant restrictions on land use and off-road vehicle movement on the installation.

Partnering with Fort Johnson, with the support of the U.S. Fish and Wildlife Service, is The Nature Conservancy, who will leverage the REPI Program to acquire easements that will protect and expand the pine snake's habitat. The project also aims to sustain working forest lands and allow continued flexibility in the use and development of Fort Johnson's land to meet its national defense mission.

BENEFIT SUMMARY

COMMUNITY

- Preserves working lands
- Provides habitat for rare and endangered species

MILITARY

- Preserves on-installation live-fire and maneuver training capacity
- Reduces lost training days and the need for workarounds that would reduce training realism or effectiveness
- Provides for future mission growth



A Chinook helicopter performing an exercise (top) and a Stryker vehicle firing a missile (bottom) at the Joint Readiness Training Center.

KEY PARTNERS

- Louisiana Department of Wildlife and Fisheries
- The Nature Conservancy
- U.S. Fish and Wildlife Service

CONTACT

PUBLIC AFFAIRS OFFICE:
(337) 531-1344

FAST FACTS FROM FY 2012 THROUGH FY 2024 | Project Status: Completed

Authority	Transactions	Acres Protected, Managed, or Improved	Total Funds Expended
10 U.S.C. § 2684a	5	1,555	\$5.0 million

Subtotals may not sum to combined totals due to rounding



NAVAL AIR STATION JOINT RESERVE BASE NEW ORLEANS

Providing critical access to air ranges, Naval Air Station (NAS) Joint Reserve Base (JRB) New Orleans' multiple readiness missions require training pilots on several aircraft, including helicopters, from multiple Services.

NAS JRB New Orleans also maintains readiness at all times to launch in support of the Department of Homeland Security and coastal rescue operations. The base allows for overwater operations, live weapon firings, and urban close-air-support environments. Its proximity to the Gulf also reduces travel time to critical oil production facilities, saving precious minutes for search and rescue operations.

NAS JRB New Orleans partnered with the Trust for Public Land and Plaquemines Parish to protect one of its most active runways from a planned 600-home subdivision nearby. Investment in infrastructure to support land development and hurricane evacuation is

increasing the value and desirability of nearby land. Developing the subdivision may have curtailed aviation training at the base because of noise and safety concerns, thereby threatening its viability.

With flight operations expected to remain level or increase in coming years, NAS JRB New Orleans is protecting an essential economic driver for a New Orleans region still

looking to recover from hurricane devastation. Not only does the project protect the base, which is itself a community asset, but the land will also provide an opportunity for a new Parish-managed park for the public to enjoy.



BENEFIT SUMMARY

COMMUNITY

- Protects local character and working lands that benefit the economy
- Supports existing regional planning efforts, including the development of a Joint Use Land Study to better coordinate planning efforts among various government entities

MILITARY

- Protects live-fire artillery, maneuver, helicopter, and night flying training that produces significant amounts of noise or requires minimal light pollution
- Prevents the loss of training days and the use of less-realistic workarounds
- Provides for future mission growth and multi-Service missions



Facilities at NAS JRB New Orleans provide the Navy with a diverse array of training venues (top and bottom).

KEY PARTNERS

- Plaquemines Parish
- State of Louisiana
- The Trust for Public Land

CONTACT

COMMUNITY PLANS & LIAISON OFFICER:
(504) 678-9941

FAST FACTS FROM FY 2010 THROUGH FY 2024 | Project Status: Completed

Authority	Transactions	Acres Protected, Managed, or Improved	Total Funds Expended
10 U.S.C. § 2684a	1	202	\$7.3 million

Subtotals may not sum to combined totals due to rounding