



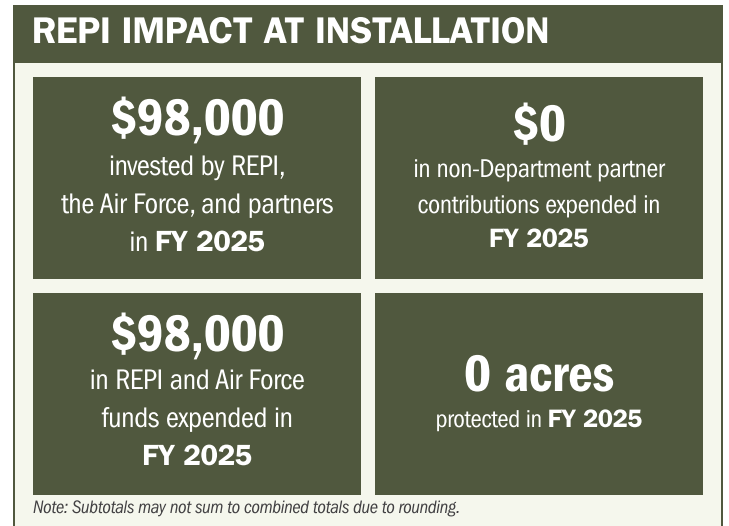
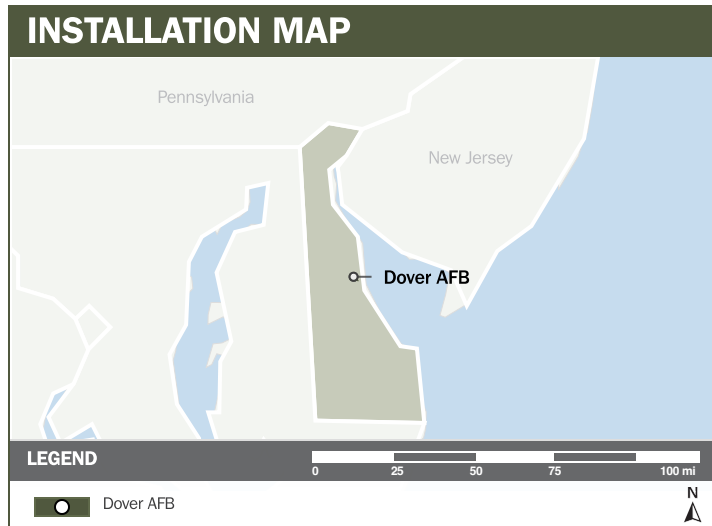
# DOVER AFB

## ABOUT THE INSTALLATION

Dover Air Force Base (AFB) is home to the 436th Airlift Wing, commonly known as the "Eagle Wing," and the 512th Airlift Wing, the Reserve associate, as the "Liberty Wing." The 436th and 512th Airlift Wings fly hundreds of missions worldwide, providing movement of outsized cargo and personnel on scheduled, special assignment, exercise and contingency airlift missions. Together, they account for 20 percent of the nation's strategic outsized airlift capability, projecting global reach to more than 100 countries.

## STRENGTHENING MISSION READINESS THROUGH REPI INVESTMENTS

The Department of War's (DoW) Readiness and Environmental Protection Integration (REPI) Program has played a critical role in supporting Dover AFB's long-term operational success. Through strategic land conservation and partnership-driven investments, REPI funding has helped address critical military installation resilience threats that could impair mission capabilities.



## PROJECT OVERVIEW

### MILITARY INSTALLATION RESILIENCE—10 U.S.C. § 2684A and 16 U.S.C. § 670c-1

- Dover Air Force Base operates as the DoW's busiest air terminal, providing supplies to operations in Europe, Africa, and the Middle East. The installation operates two active runways supporting 25,000 annual flights and the 436th Aerial Port Squadron, which moves more than 100,000 tons of cargo annually, relying solely on Jet A fuel provided through the Port Mahon Fuel Depot.
- The Fuel Depot sits in a low-lying area of the installation with only one available access route, leaving it vulnerable to flooding impacts, coastal wave action, and erosion. The flooding of this access route impairs reliable access to the essential Jet A fuel, which impacts all flying missions out of the base.





# DOVER AFB

## PROJECT OVERVIEW (CONTINUED)

- To mitigate future flooding risks, Dover Air Force Base partnered with The University of Delaware and The Nature Conservancy to purchase a neighboring parcel for stormwater drainage and to construct a living shoreline, stabilizing the coastline along Port Mahon Road to protect mission critical fuel access.

## KEY FISCAL YEAR MILESTONES AT DOVER AFB\*



\* These milestones demonstrate how the installation is strategically utilizing the REPI Program to mitigate encroachment risks and enhance mission assurance. While not exhaustive, the list highlights the various approaches installations are using to preserve critical testing and training capabilities essential to national defense.



Subscribe to the REPI Program Listserv by scanning the QR code.  
For more information about the REPI Program and supportive DoW efforts, please visit [www.repi.mil](http://www.repi.mil).