



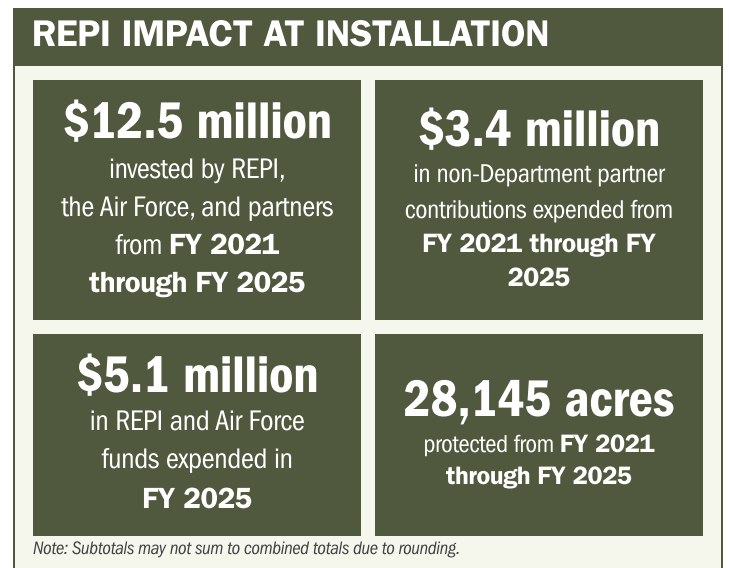
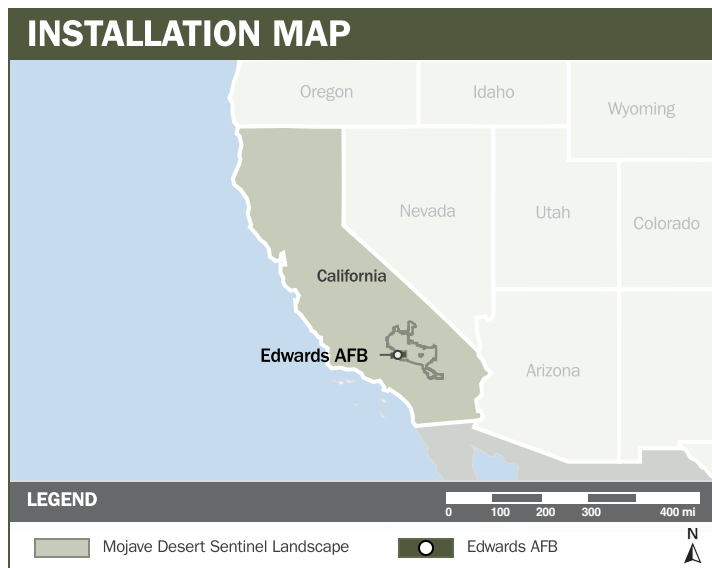
EDWARDS AFB

ABOUT THE INSTALLATION

Edwards Air Force Base (AFB) is located within the Mojave Desert Sentinel Landscape and is home to the 412th Test Wing and the United States Air Force Test Pilot School. The 412th conducts research, development, test, and evaluation of aerospace systems. With direct access to nearly two million acres of military special-use airspace around Edwards AFB, the 412th Test Wing advances airborne systems, including but not limited to avionics, electronic combat, autonomy, and surveillance.

STRENGTHENING MISSION READINESS THROUGH REPI INVESTMENTS

The Department of War's (DoW) Readiness and Environmental Protection Integration (REPI) Program has played a critical role in supporting Edwards AFB's long-term operational success. Through strategic land conservation and partnership-driven investments, REPI funding has helped prevent incompatible development, preserve training flexibility, and sustain critical capabilities beyond the installation boundary.



PROJECT OVERVIEW

MILITARY INSTALLATION RESILIENCE—10 U.S.C. § 2684A

- Severe wildfires in California pose an immediate risk to Edwards AFB's critical infrastructure, training missions, and neighboring communities. In 2020, the stagecoach fire burned over 7,000 acres in Kern County and would have impeded a significant portion of the installation's operations if it had burned closer to the base.
- To safeguard training missions from wildfire smoke, haze, or damage to flight facilities, Edwards AFB and partners are securing Restrictive Use Easements across nearby properties and conducting prescribed burns post-acquisition to reduce hazardous fuel loads.



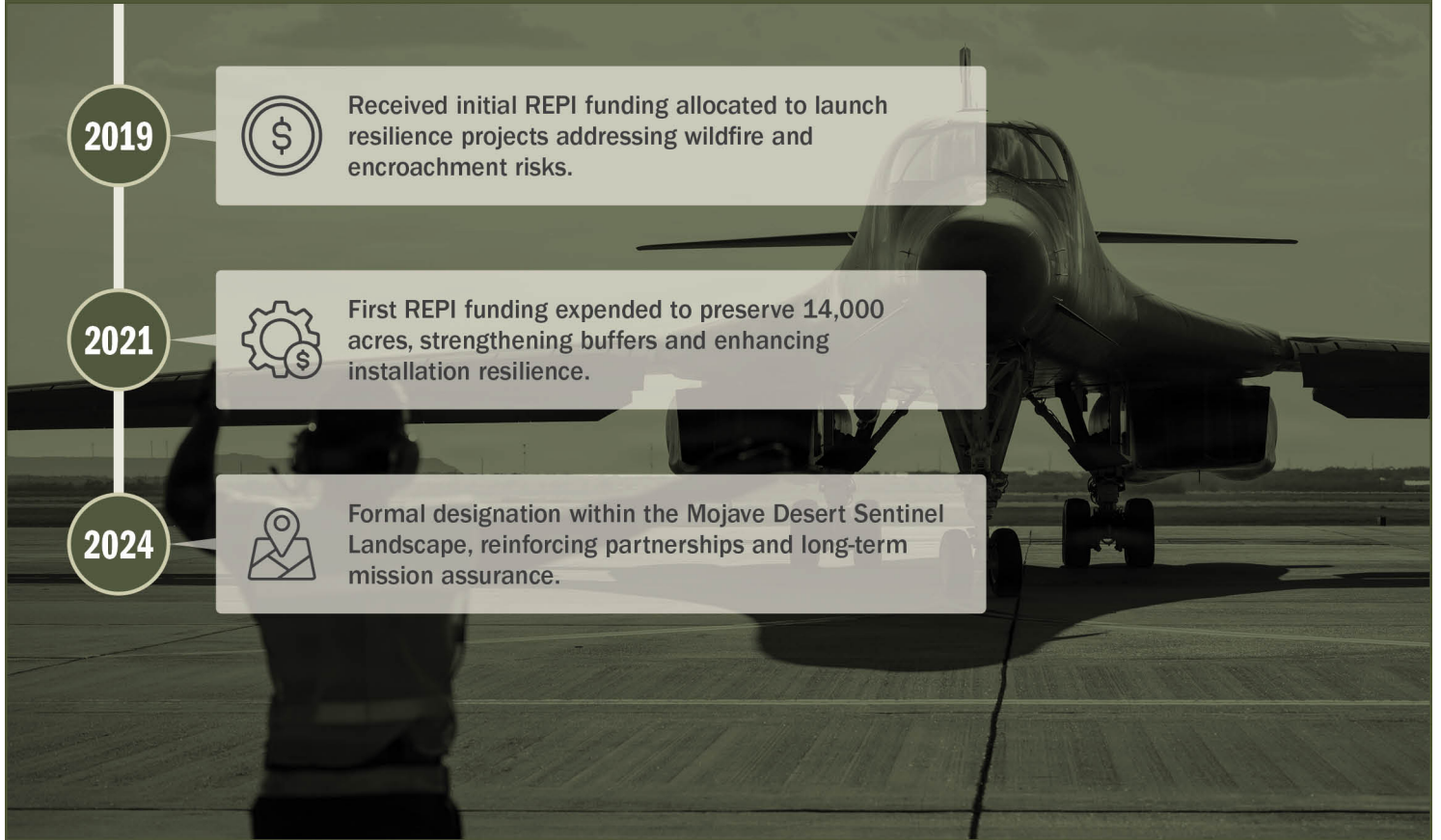


EDWARDS AFB

PROJECT OVERVIEW (CONTINUED)

- Preserving parcels beneath essential airspace and key military flight paths also prevents incompatible commercial, residential, or energy development, ensuring safe and uninterrupted flight operations.

KEY FISCAL YEAR MILESTONES AT EDWARDS AFB*



* These milestones demonstrate how the installation is strategically utilizing the REPI Program to mitigate encroachment risks and enhance mission assurance. While not exhaustive, the list highlights the various approaches installations are using to preserve critical testing and training capabilities essential to national defense.



Subscribe to the REPI Program Listserv by scanning the QR code.
For more information about the REPI Program and supportive DoW efforts, please visit www.repi.mil.