



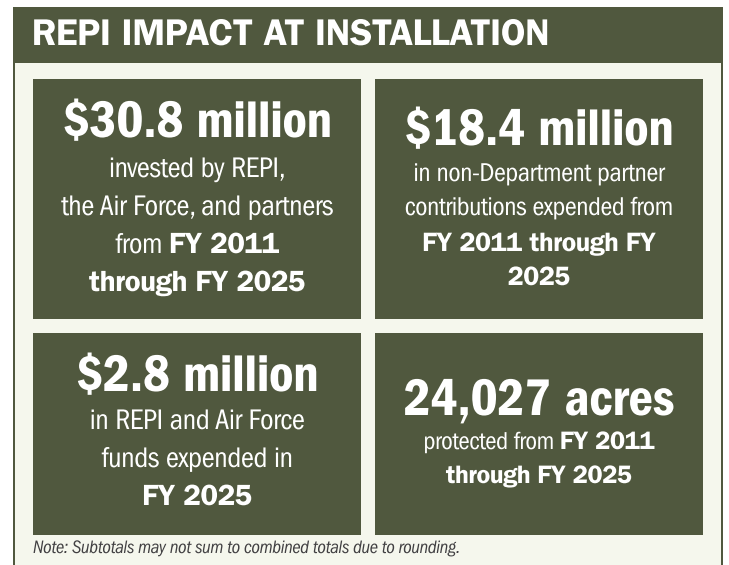
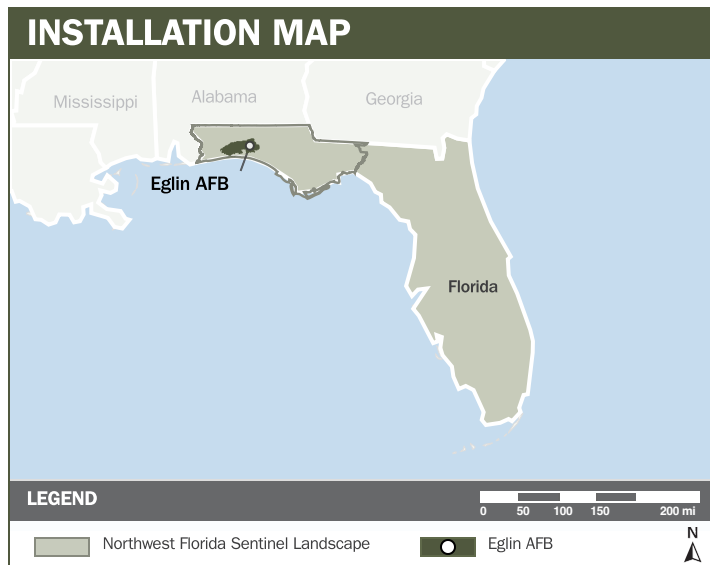
EGLIN AFB

ABOUT THE INSTALLATION

Located in the Northwest Florida Sentinel Landscape, Eglin Air Force Base (AFB) is the Air Force's largest installation, with extensive special use airspace enabling its critical test and evaluation mission. That mission is increasingly vital as the base hosts Joint Strike Fighter training, which requires low level flights into the Eglin range from Eglin Gulf Test and Training Range (EGTTR) airspace.

STRENGTHENING MISSION READINESS THROUGH REPI INVESTMENTS

The Department of War's (DoW) Readiness and Environmental Protection Integration (REPI) Program has played a critical role in supporting Eglin AFB's long-term operational success. Through strategic land conservation and partnership-driven investments, REPI funding has helped prevent incompatible development, preserve training flexibility, and improve the coastline's military installation resilience.



PROJECT OVERVIEW

INCOMPATIBLE DEVELOPMENT—10 U.S.C. § 2684A

- To guard against development pressures underneath airspace designated for low altitude, high-speed military operations, Eglin AFB's partners are conserving large tracts of land along the installation's training routes, as well as within important wildlife corridors.
- Part of an unprecedented partnership, the base is protecting land within the Northwest Florida Greenway, a 100-mile habitat corridor between the base and the Apalachicola National Forest to the southeast.
- With strong support from the state's Florida Forever program, the partnership's dedication to the military mission allows Eglin AFB to continue to conduct its testing and training activities and protect a major regional economic driver.





EGLIN AFB

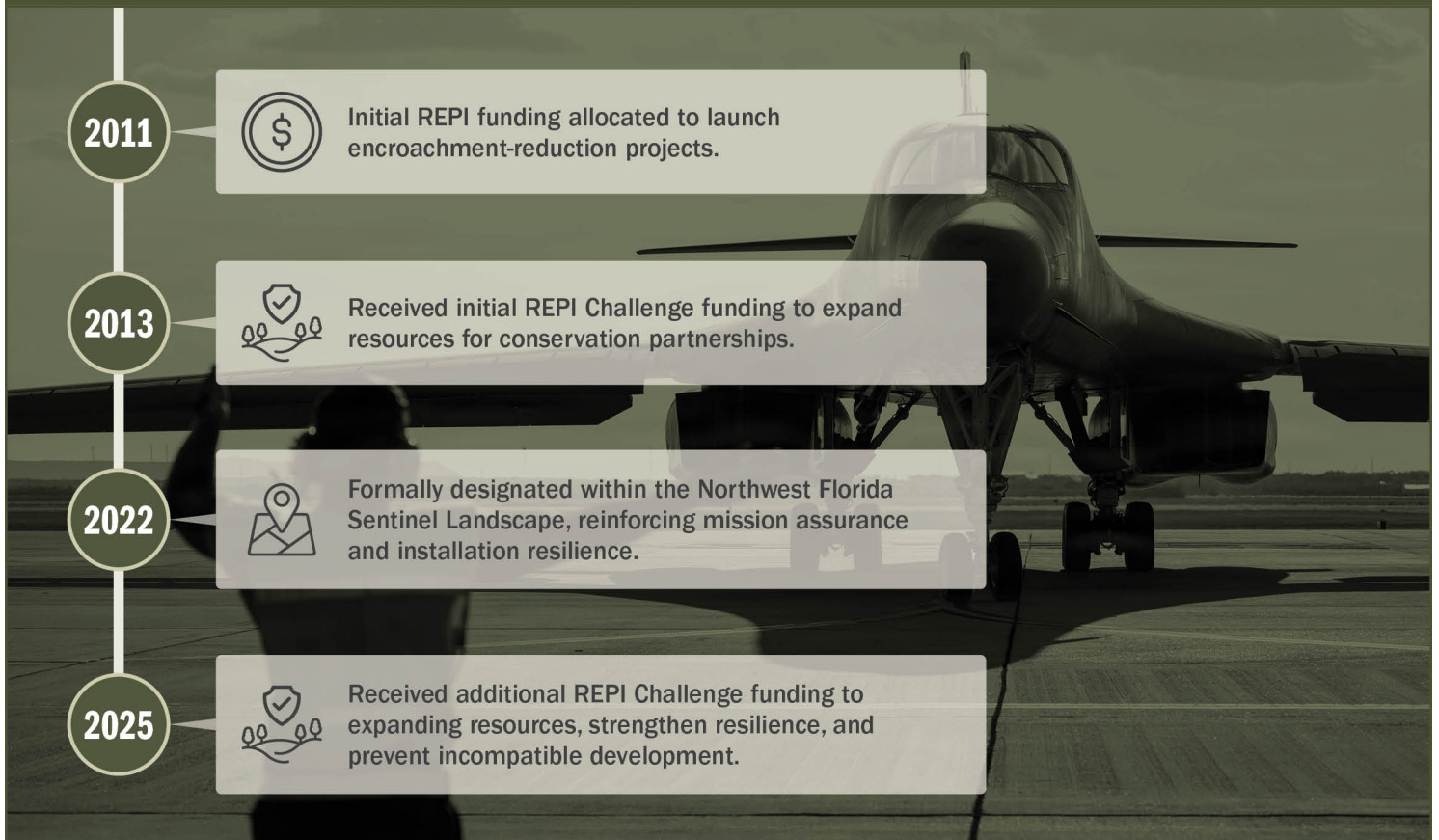
PROJECT OVERVIEW (CONTINUED)

MILITARY INSTALLATION RESILIENCE—10 U.S.C. § 2684A

- In 2024, the Office of Local Defense Community Cooperation sponsored an Installation Readiness project for Eglin AFB, prioritizing resilience improvements along U.S. Highway 98. This interstate serves as the sole east west travel corridor in southern Okaloosa County, a designated hurricane evacuation route, and a critical artery for mission readiness.
- Coastal erosion along Highway 98 threatens underground infrastructure and could lead to roadway restrictions, thereby preventing access to installation infrastructure on Okaloosa Island, including the Flight Terminations System Control Site and Coast Guard Station Destin.
- The installation is leveraging Federal funding, including REPI Program resources, to construct a 4,500 linear foot living shoreline along Highway 98, stabilizing the coast and ensuring uninterrupted personnel access.



KEY FISCAL YEAR MILESTONES AT EGLIN AFB*



* These milestones demonstrate how the installation is strategically utilizing the REPI Program to mitigate encroachment risks and enhance mission assurance. While not exhaustive, the list highlights the various approaches installations are using to preserve critical testing and training capabilities essential to national defense.



Subscribe to the REPI Program Listserv by scanning the QR code.
For more information about the REPI Program and supportive DoW efforts, please visit www.repi.mil.