



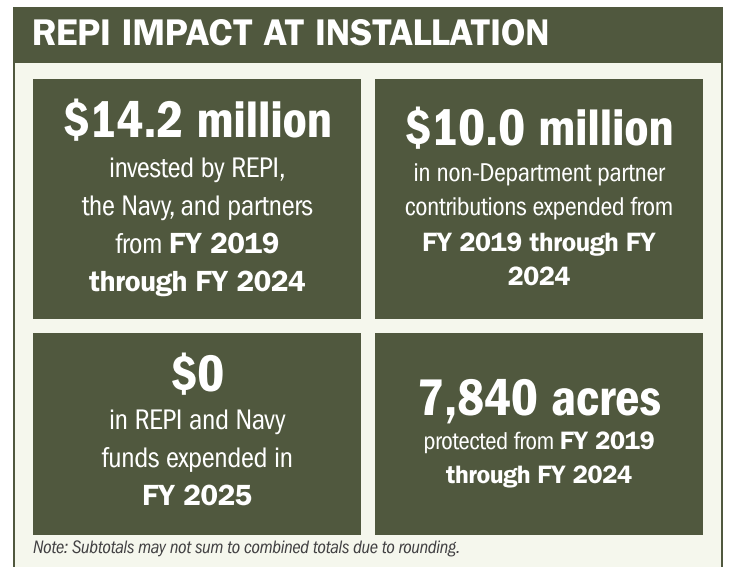
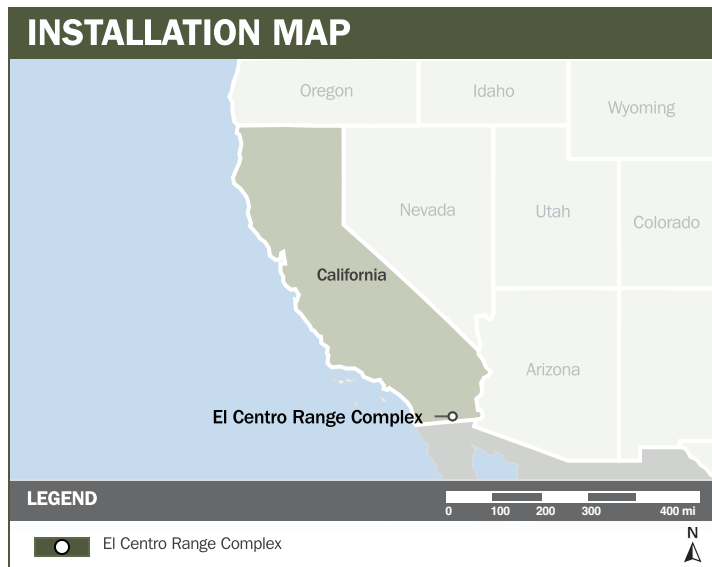
# EL CENTRO RANGE COMPLEX

## ABOUT THE INSTALLATION

Naval Air Facility (NAF) El Centro is under the jurisdiction of Navy Region Southwest and serves both as temporary homeport to military units conducting live air-to-air and air-to-ground training, and as the winter training home of the Blue Angels aerobatics display team. The installation supports the Navy's Fleet Readiness Training Plan and is essential to aviation training in combat aerial maneuvering and scored target bombing practice for U.S. Naval Aviation Squadrons.

## STRENGTHENING MISSION READINESS THROUGH REPI INVESTMENTS

The Department of War's (DoW) Readiness and Environmental Protection Integration (REPI) Program has played a critical role in supporting NAF El Centro's long-term operational success. Through strategic land acquisition and restrictive use easements, the REPI Program has helped prevent incompatible development, preserve training flexibility, and sustain critical capabilities beyond the installation boundary.



## PROJECT OVERVIEW

### INCOMPATIBLE DEVELOPMENT—10 U.S.C. § 2684A

- NAF El Centro's national-level training mission relies on unrestricted range access but expanding urban development and regional renewable energy projects threaten maneuver space, flight corridors outside the installation boundary, and overall airspace availability.
- Growing residential development introduces new safety risks and increases noise-related pressures, forcing aircrews to avoid populated areas and restricted airspace that limit low-altitude training.
- NAF El Centro is leveraging REPI funds to establish a protective buffer of compatible land use and restrictive-use easements around key operating areas, ensuring mission-critical flight operations can continue unimpeded.





# EL CENTRO RANGE COMPLEX

## KEY FISCAL YEAR MILESTONES AT NAF EL CENTRO\*

2014



NAFEC partners with the Trust for Public Land (TPL) to launch its first REPI project, establishing restrictive-use easements to protect mission-critical airspace and range access.

2019



NAFEC secures additional REPI funding to continue working with TPL to prevent encroachment and preserve operational flexibility around the installation.

2023



The Sustainable Agricultural Lands Conservation Program matches REPI funds to acquire an easement within NAFEC's Air Facility Priority Area, strengthening long-term protection of key training corridors and airspace.

\* These milestones demonstrate how the installation is strategically utilizing the REPI Program to mitigate encroachment risks and enhance mission assurance. While not exhaustive, the list highlights the various approaches installations are using to preserve critical testing and training capabilities essential to national defense.



Subscribe to the REPI Program Listserv by scanning the QR code.  
For more information about the REPI Program and supportive DoW efforts, please visit [www.repi.mil](http://www.repi.mil).