



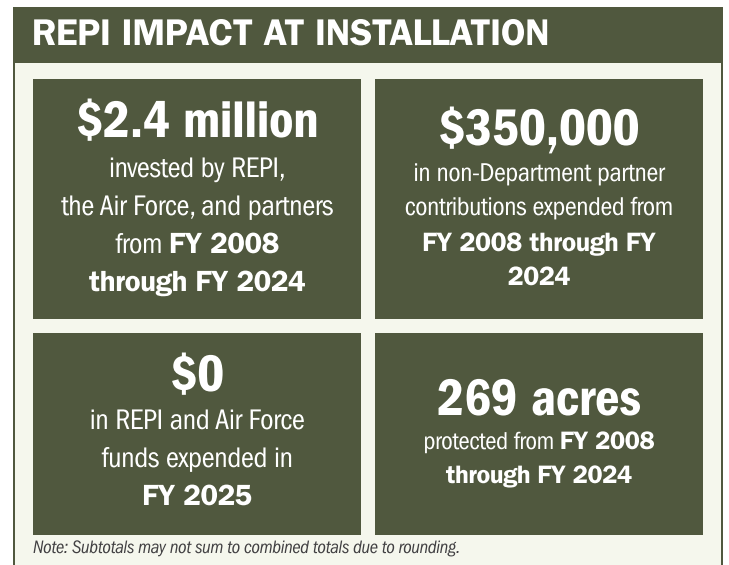
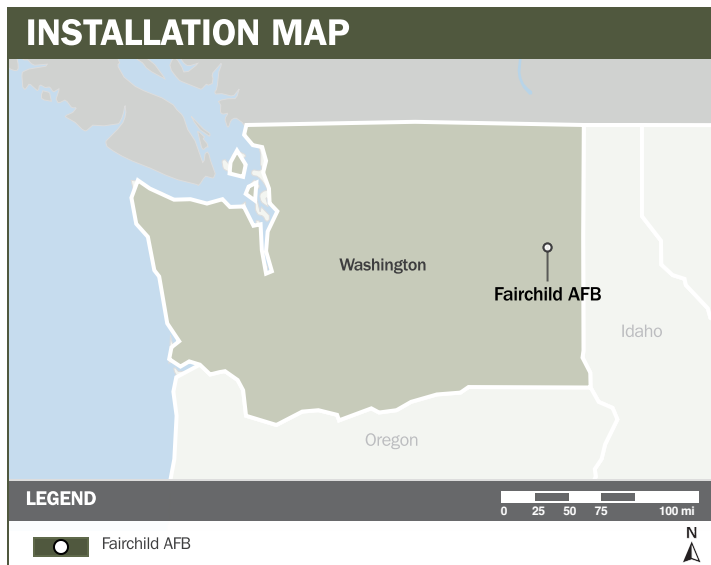
# FAIRCHILD AFB

## ABOUT THE INSTALLATION

Fairchild Air Force Base (AFB), located just west of Spokane, Washington, hosts the 92nd Air Refueling Wing (which is assigned to support the Air Mobility Command's 15th Expeditionary Mobility Task Force) and the 141st Air Refueling Wing. The base's missions involve providing air refueling as well as passenger and cargo airlift and aero-medical evacuation, supporting U.S. and coalition conventional operations.

## STRENGTHENING MISSION READINESS THROUGH REPI INVESTMENTS

The Department of War's (DoW) Readiness and Environmental Protection Integration (REPI) Program has played a critical role in supporting Fairchild AFB's long-term operational success. Through strategic land conservation and partnership-driven investments, REPI funding has helped prevent incompatible development, preserve training flexibility, and sustain critical capabilities beyond the installation boundary.



## PROJECT OVERVIEW

### INCOMPATIBLE DEVELOPMENT—10 U.S.C. § 2684A

- Fairchild AFB's REPI program is crucial for protecting its missions from local encroachment.
- A past project with Spokane County secured a restrictive easement on the eastern boundary, preventing incompatible structures, reducing bird-strike hazards, and allowing for the relocation of a rail line and security fence. Building on that success, a new initiative with the Compatible Lands Foundation confronts intense pressure from regional growth. Through recent acquisitions and planned future actions, the program is on track to secure easements on over 1,500 acres, creating a continuous buffer zone.





# FAIRCHILD AFB

## PROJECT OVERVIEW (CONTINUED)

- This effort focuses on preserving agricultural lands in the flight path and preventing incompatible uses—such as mining and residential housing—within the airfield's Accident Potential Zones (APZs). This proactive strategy safeguards FAFB's vital missions—including its strategic air-refueling wing and SERE training—ensuring national defense readiness while preserving the base's significant economic contributions to the region.

## KEY FISCAL YEAR MILESTONES AT FAIRCHILD AFB\*



\* These milestones demonstrate how the installation is strategically utilizing the REPI Program to mitigate encroachment risks and enhance mission assurance. While not exhaustive, the list highlights the various approaches installations are using to preserve critical testing and training capabilities essential to national defense.



Subscribe to the REPI Program Listserv by scanning the QR code.  
For more information about the REPI Program and supportive DoW efforts, please visit [www.repi.mil](http://www.repi.mil).