



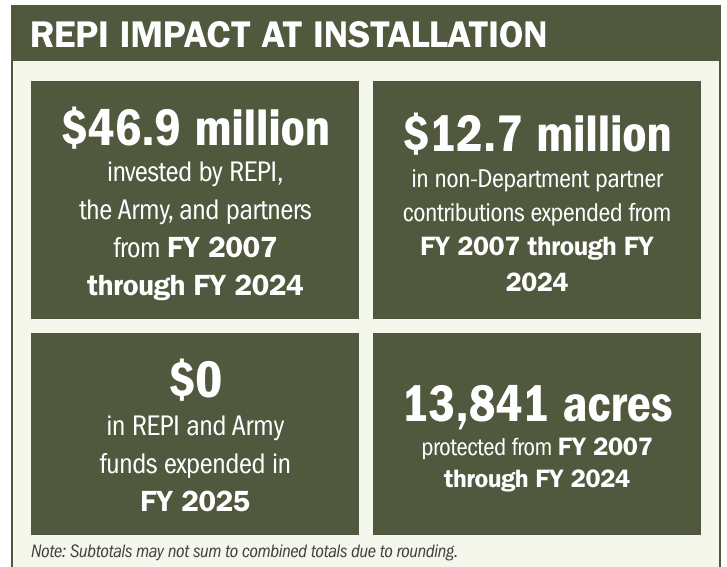
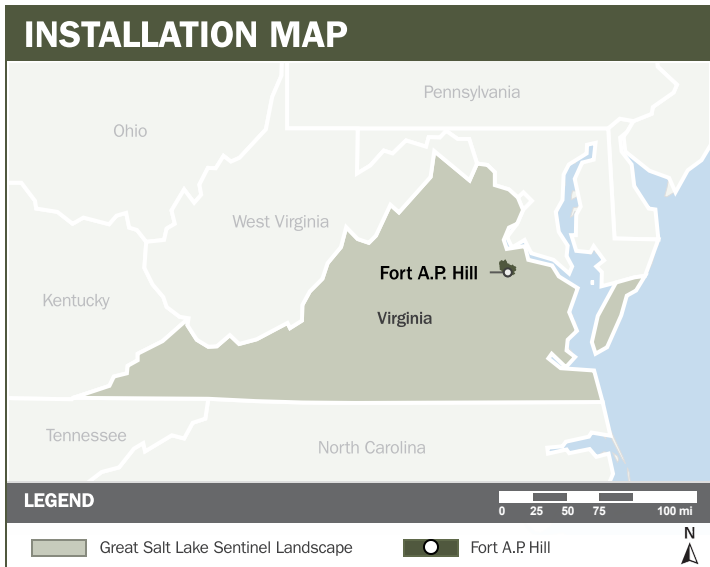
FORT A.P. HILL

ABOUT THE INSTALLATION

Fort A.P. Hill, located in Virginia’s Potomac Sentinel Landscape, is the state’s largest military installation and a key regional training center on the East Coast. The installation provides flexible, year-round training for Army, joint, and interagency forces and supports rapid response operations across the mid-Atlantic and National Capital regions. Its 76,000 acres enable realistic joint and combined-arms training, logistics support, and mission preparation.

STRENGTHENING MISSION READINESS THROUGH REPI INVESTMENTS

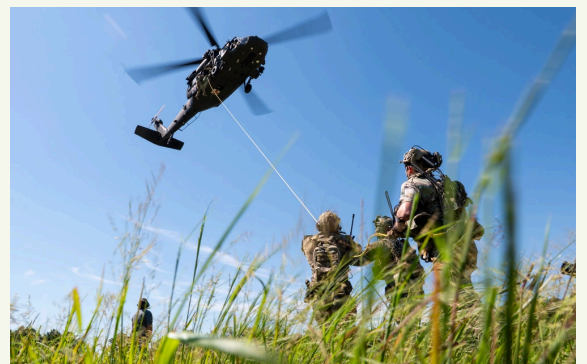
The Department of War (DoW) Readiness and Environmental Protection Integration (REPI) Program has played a critical role in supporting Fort A.P. Hill’s long-term operational success. Strategic, partnership-driven land conservation prevents incompatible development, protects maneuver and range flexibility, and preserves critical training capacity beyond the installation boundary, directly reinforcing mission readiness.



PROJECT OVERVIEW

INCOMPATIBLE DEVELOPMENT—10 U.S.C. § 2684A

- Fort A.P. Hill must protect mission-critical airspace and training infrastructure, including flight corridors, helicopter operating areas, restricted and special-use airspace, the Aviation Drop Zone, and the C-130-capable Assault Landing Strip, all of which are vulnerable to encroachment that would limit training.
- Incompatible development is the installation’s primary long-term threat. Planned growth in surrounding communities would directly constrain airborne operations, helicopter routes, and airspace access, reducing the Army’s ability to conduct training.





FORT A.P. HILL

PROJECT OVERVIEW (CONTINUED)

- To counter these threats, Fort A.P. Hill is leveraging REPI Program funds under 10 U.S.C. § 2684a to protect 48,000 acres of maneuver training areas, all small arms ranges, firing points, and live fire range complexes. These efforts prevent external encroachment, improve maneuverability, and line of sight for training.

INSTALLATION RESILIENCE—10 U.S.C. § 2684A

- Growing encroachment—especially high-density residential development—increases smoke-sensitivity and threatens Fort A.P. Hill’s ability to conduct prescribed burns that maintain maneuverability, preserve line-of-sight, and support the natural resource conditions required for realistic training.
- Without prescribed fire, wildfire risk rises sharply due to live-fire training and drought conditions. Additional development north of the installation would also increase light pollution and disrupt baseline conditions needed for Fort Belvoir’s C5ISR RTI-D sensors and optics testing.
- REPI investments will secure installation resilience by permanently protecting wetlands, river corridors, and high-risk development areas, preventing environmental degradation, and reducing future encroachment that could limit training and operational readiness.



KEY FISCAL YEAR MILESTONES AT CAMP WILLIAMS*

2016

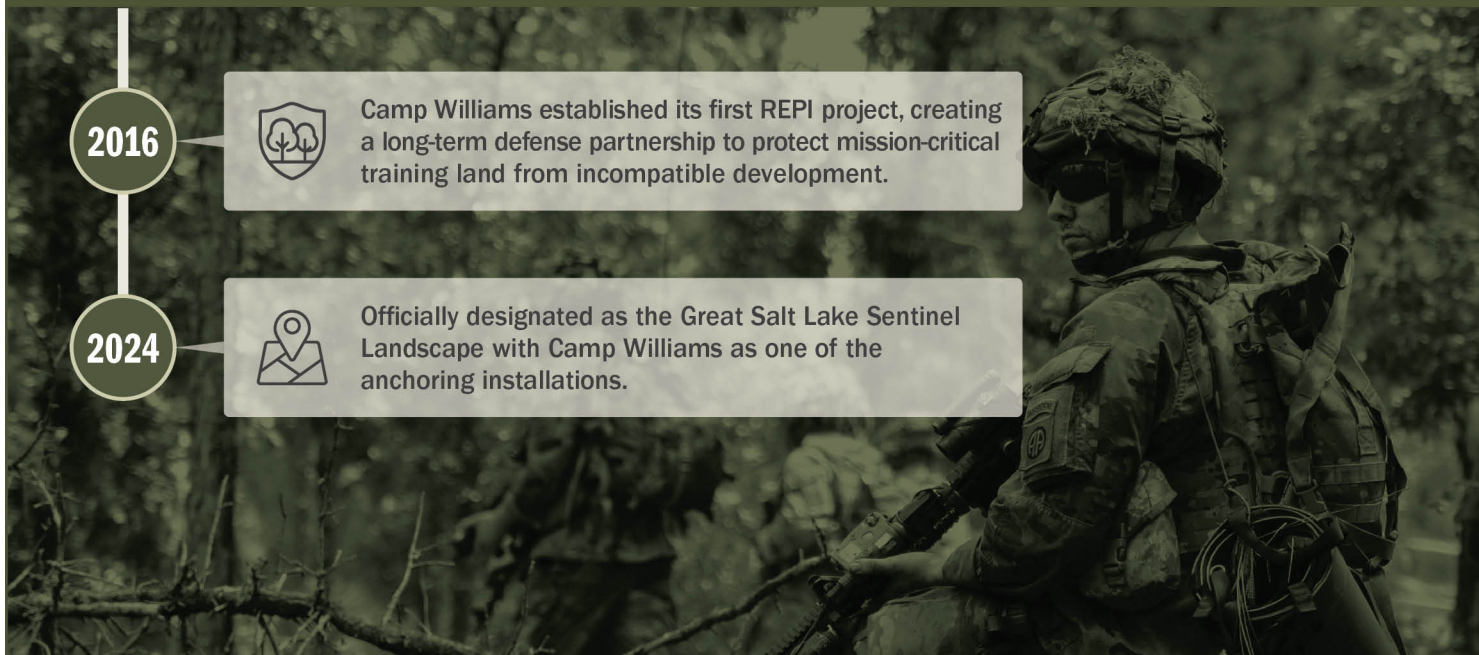


Camp Williams established its first REPI project, creating a long-term defense partnership to protect mission-critical training land from incompatible development.

2024



Officially designated as the Great Salt Lake Sentinel Landscape with Camp Williams as one of the anchoring installations.



Subscribe to the REPI Program Listserv by scanning the QR code.
For more information about the REPI Program and supportive DoW efforts, please visit www.repi.mil.