



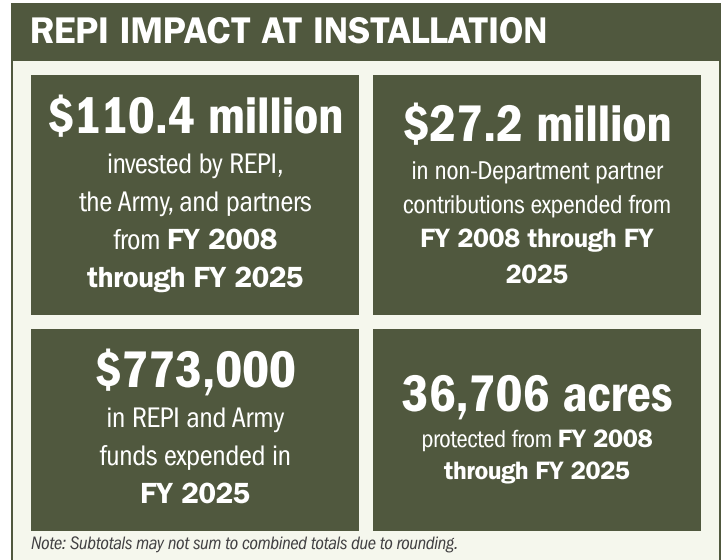
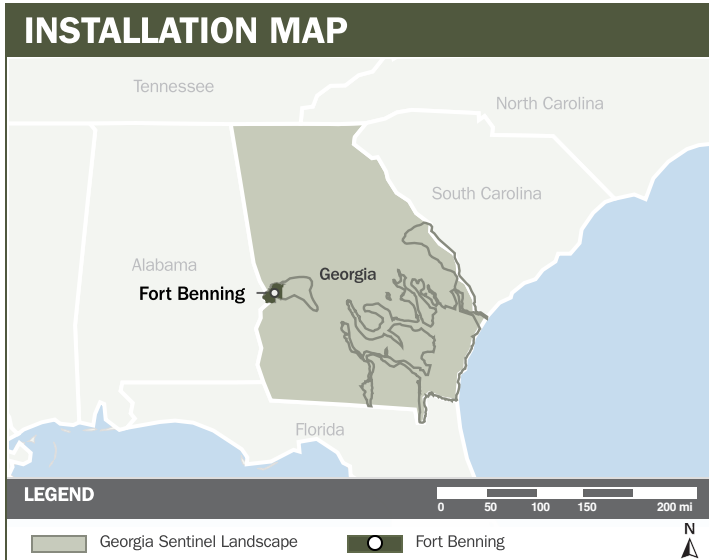
FORT BENNING

ABOUT THE INSTALLATION

Fort Benning is one of nine installations in the Georgia Sentinel Landscape and hosts the Maneuver Center of Excellence, the Army’s core institution for training the Infantry and Armor force. As the home of mechanized, light, airborne, air assault, and ranger units, the installation supports mission sets central to national defense. Spanning 182,000 acres, Fort Benning provides 86 live-fire ranges and 102,000 acres of maneuver space, a capacity essential for preparing the Army’s maneuver formations for large-scale combat operations.

STRENGTHENING MISSION READINESS THROUGH REPI INVESTMENTS

The Department of War (DoW) Readiness and Environmental Protection Integration (REPI) Program has played a critical role in supporting Fort Benning’s long-term operational success. Through strategic land conservation and partnership-driven investments, REPI funding has helped prevent incompatible development, preserve training flexibility, and sustain critical mission capabilities beyond the installation boundary.



PROJECT OVERVIEW

INCOMPATIBLE DEVELOPMENT—10 U.S.C. § 2684A

- Fort Benning’s national defense mission depends on large, uninterrupted maneuver lands, live-fire ranges, and specialized airspace to train mechanized, light, airborne, air assault, and ranger forces.
- Urban growth and incompatible land use around the installation increasingly constrain airborne operations, maneuver training, and long-term mission flexibility.
- REPI investments under 10 U.S.C. § 2684a protect critical training lands, preserve maneuver corridors, and prevent incompatible development, sustaining access to airspace and live-fire ranges. These protections directly enable mounted and dismounted maneuver training and aviation operations essential to force readiness.





FORT BENNING

PROJECT OVERVIEW (CONTINUED)

HABITAT PRESERVATION—10 U.S.C. § 2684A

- Fort Benning’s ability to construct, maintain, and operate ranges and maneuver areas is constrained by requirements to protect threatened, endangered, and at-risk species, whose habitat overlaps key training lands.
- Species protection measures restrict range construction, limit maneuver access, and reduce training flexibility, creating growing challenges as the installation manages storm damage, new infrastructure needs, and long-term forest management.
- Leveraging the REPI Program under 10 U.S.C. § 2684a authority, Fort Benning is partnering with private, state, and Federal partners to protect longleaf pine habitat to reduce regulatory pressure on training lands, preserve operational flexibility, and prevent incompatible development that could further constrain mission readiness.



KEY FISCAL YEAR MILESTONES AT FORT BENNING*

- 2006** First REPI project was established to begin protecting key training lands from incompatible development.
- 2018** Officially designated as the Georgia Sentinel Landscape with Fort Benning as one of the anchoring installations.
- 2018** Received REPI Challenge funding to protect 7,051 acres supporting military readiness, community compatibility, and long-term training sustainability.
- 2021** Fort Benning received REPI funding to finalize a Conservation Crediting program through Tier 2 Consultation with USFWS, resulting in direct benefits to mission. The finalized BOCO resulted in 1,193 resident gopher tortoise credits and 58 red-cockaded woodpecker credits for Fort Benning.

* These milestones demonstrate how the installation is strategically utilizing the REPI Program to mitigate encroachment risks and enhance mission assurance. While not exhaustive, the list highlights the various approaches installations are using to preserve critical testing and training capabilities essential to national defense.



Subscribe to the REPI Program Listserv by scanning the QR code.
For more information about the REPI Program and supportive DOD efforts, please visit www.repi.mil.