



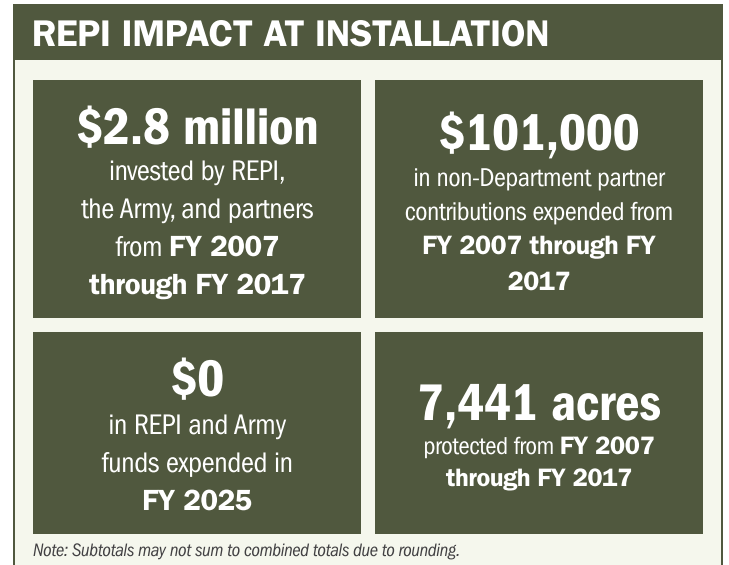
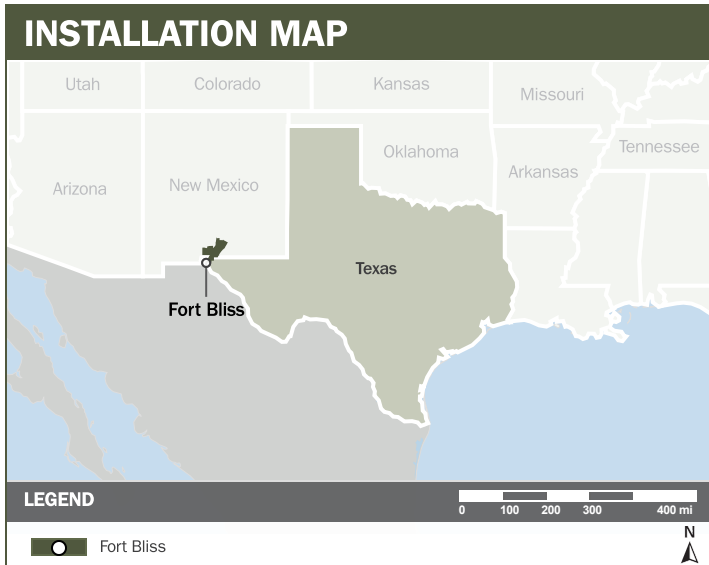
# FORT BLISS

## ABOUT THE INSTALLATION

Fort Bliss is the Army's largest maneuver installation for heavy armor units, supporting tanks and other tracked combat vehicles with rapid-deployment capability. As the Army's second-largest installation, it hosts roughly 30,000 warfighters and is home to the 1st Armored Division's heavy and light units. The Air Force also conducts CENTCOM-required pre-deployment training for its security forces on Fort Bliss's live-fire ranges, with up to 10,000 Airmen rotating through annually. The Fort Bliss Training Complex provides expansive desert terrain ideal for large-scale maneuver, combined-arms integration, and air-ground coordination, making it one of the Department of War's most critical training environments.

## STRENGTHENING MISSION READINESS THROUGH REPI INVESTMENTS

The Department of War (DoW) Readiness and Environmental Protection Integration (REPI) Program has played a critical role in supporting Fort Bliss's long-term operational success. Through strategic land conservation and partnership-driven investments, REPI funding has helped prevent incompatible development, preserve training flexibility, and sustain critical capabilities beyond the installation boundary.



## PROJECT OVERVIEW

**INCOMPATIBLE DEVELOPMENT—10 U.S.C. § 2684A**

- Rapid urban growth from El Paso is pushing residential development closer to Fort Bliss, threatening training flexibility, noise management, airspace access, and operational security.
- Mission growth is increasing demand for Fort Bliss's training infrastructure. Protecting dark-sky conditions is essential to maintaining training realism.



# FORT BLISS

## PROJECT OVERVIEW (CONTINUED)

- To mitigate these risks, Fort Bliss has leveraged REPI funds to secure land-use restrictions on thousands of acres adjacent to the installation. These protections preserve dark skies, maintain critical buffers, and ensure long-term viability of maneuver, live-fire, and night-training operations.

### Habitat Preservation—10 U.S.C. § 2684A

- Fort Bliss is working with the Bureau of Land Management (BLM) on an agreement to return withdrawn land, preventing surrounding BLM parcels from being sold and developed.
- This effort blocks incompatible residential growth, preserves the rural landscape, supports New Mexico’s land-use priorities, and protects the taxpayer investment in Fort Bliss’s mission.

## KEY FISCAL YEAR MILESTONES AT FORT BENNING\*

- 2006** First REPI project was established to begin protecting key training lands from incompatible development.
- 2018** Officially designated as the Georgia Sentinel Landscape with Fort Benning as one of the anchoring installations.
- 2018** Received REPI Challenge funding to protect 7,051 acres supporting military readiness, community compatibility, and long-term training sustainability.
- 2021** Fort Benning received REPI funding to finalize a Conservation Crediting program through Tier 2 Consultation with USFWS, resulting in direct benefits to mission. The finalized BOCO resulted in 1,193 resident gopher tortoise credits and 58 red-cockaded woodpecker credits for Fort Benning.

\* These milestones demonstrate how the installation is strategically utilizing the REPI Program to mitigate encroachment risks and enhance mission assurance. While not exhaustive, the list highlights the various approaches installations are using to preserve critical training and training capabilities essential to national defense.



Subscribe to the REPI Program Listserv by scanning the QR code.  
For more information about the REPI Program and supportive DoW efforts, please visit [www.repi.mil](http://www.repi.mil).