



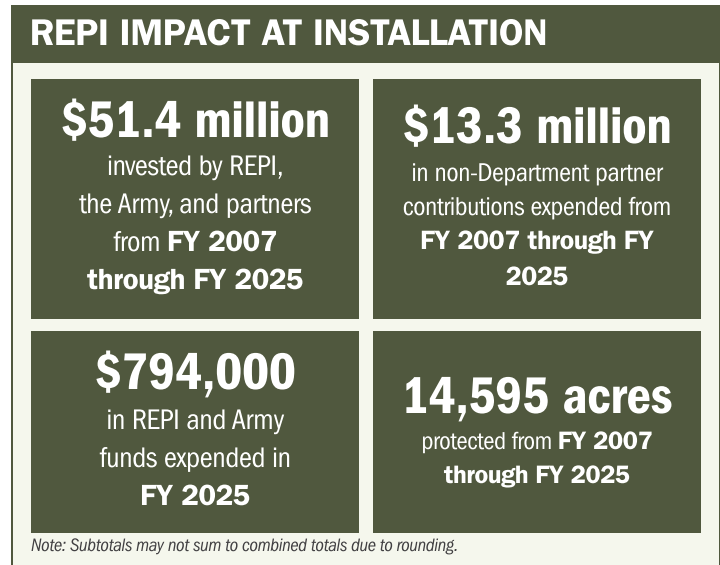
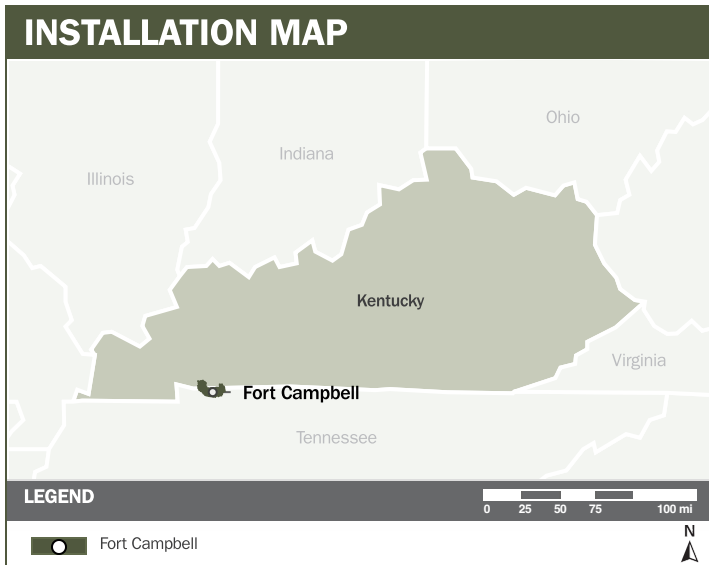
FORT CAMPBELL

ABOUT THE INSTALLATION

Fort Campbell is a major Army power-projection installation capable of rapidly deploying mission-ready forces by air, rail, highway, and inland waterway. It hosts the 101st Airborne Division, 5th Special Forces Group, and 160th Special Operations Aviation Regiment, supporting more than 27,000 soldiers and operating over 300 helicopters and 140 unmanned aircraft. Its 105,000 acres provide the maneuver space and aviation corridors required for large-caliber weapons training and full-spectrum operations.

STRENGTHENING MISSION READINESS THROUGH REPI INVESTMENTS

The Department of War (DoW) Readiness and Environmental Protection Integration (REPI) Program has played a critical role in supporting Fort Campbell's long-term operational success. Through strategic land conservation and partnership driven investments, REPI funding has helped prevent incompatible development, preserve training flexibility, and sustain critical capabilities beyond the installation boundary, ensuring Fort Campbell can continue to support high tempo training well into the future.



PROJECT OVERVIEW

INCOMPATIBLE DEVELOPMENT—10 U.S.C. § 2684A

- Fort Campbell's ability to sustain critical training and deployment missions is increasingly threatened by incompatible development that could restrict nighttime aviation, limit aircraft types and weights, and reduce continuous operations.
- REPI projects protect essential training and power-projection capabilities, including operations at two Army airfields, live-fire activities in two impact areas, and maneuver lands and off-post flight routes required to access these facilities.
- To counter these threats, Fort Campbell is applying REPI Program authority under 10 U.S.C. § 2684a to secure key training lands and expand open-space buffers around Campbell Army Airfield and the North–South Impact Area, preserving mission-essential corridors and operational flexibility.





FORT CAMPBELL

PROJECT OVERVIEW (CONTINUED)

HABITAT PRESERVATION—10 U.S.C. § 2684A

- Accelerating development around Fort Campbell is driving habitat loss and complicating species-management requirements.
- Several grassland bird and pollinator species, such as the monarch butterfly, with primary habitat in Fort Campbell's grassland maneuver areas may face future Federal listing. Such listings would impose significant restrictions on non-wooded training lands, directly affecting unit readiness and limiting the Army's ability to train and deploy forces for national missions.
- Using 10 U.S.C. § 2684a authority, this project proactively establishes off-post native grasslands to mitigate potential future listings. This approach reduces pressure on on-post maneuver areas, preserves training flexibility, and supports long-term compliance with environmental mandates essential to sustaining mission-critical operations.



KEY FISCAL YEAR MILESTONES AT FORT CAMPBELL*

2007



The first REPI project was established, launching Fort Campbell's long-term effort to prevent encroachment and protect mission essential training and deployment capabilities.

2025



REPI funds were provided to implement Fort Campbell's first grassland restoration project. The project will help mitigate encroachment from multiple grassland species.

* These milestones demonstrate how the installation is strategically utilizing the REPI Program to mitigate encroachment risks and enhance mission assurance. While not exhaustive, the list highlights the various approaches installations are using to preserve critical testing and training capabilities essential to national defense.



Subscribe to the REPI Program Listserv by scanning the QR code.
For more information about the REPI Program and supportive DOD efforts, please visit www.repi.mil.