



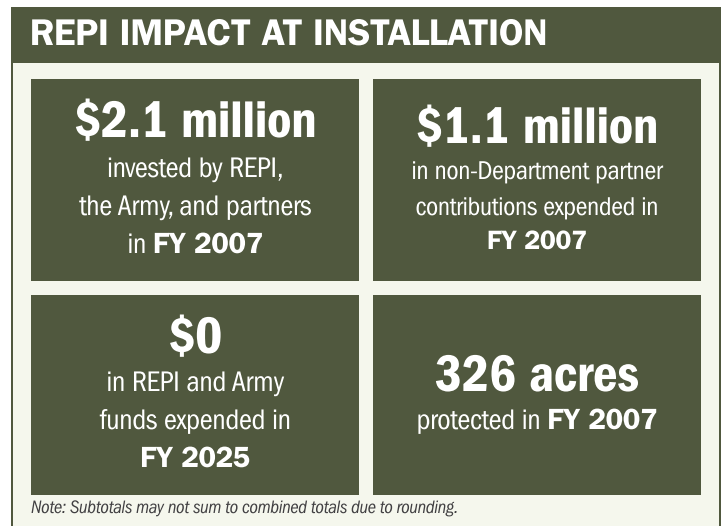
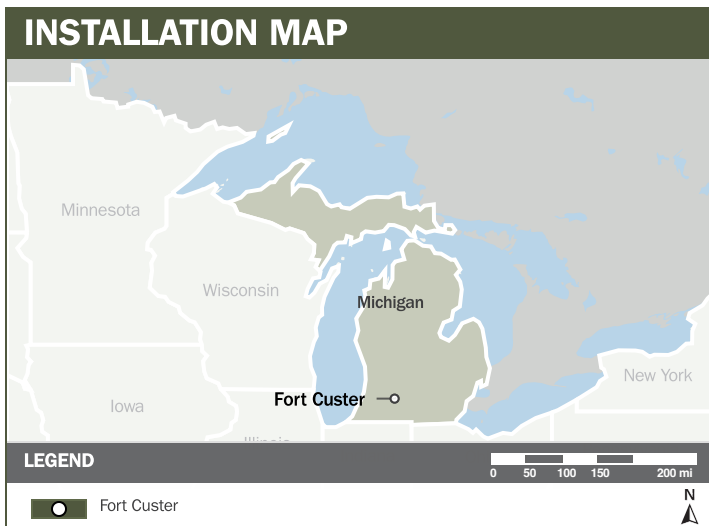
FORT CUSTER

ABOUT THE INSTALLATION

One of the more heavily used Midwest training centers for the National Guard, Fort Custer, is an important asset for its company-level small arms training, as well as maintenance training. Its location in southwestern Michigan makes it easily accessible for units from the neighboring states of Ohio, Indiana, and Illinois. Since the military training mission is a critical lifeline for this area's fiscal solvency, providing a means to protect training also benefits the area economy.

STRENGTHENING MISSION READINESS THROUGH REPI INVESTMENTS

The Department of War (DoW) Readiness and Environmental Protection Integration (REPI) Program has played a critical role in supporting Fort Bragg's long-term operational success. Through strategic land conservation and partnership-driven investments, REPI funding has helped prevent incompatible development, preserve training flexibility, and sustain critical capabilities beyond the installation boundary.



PROJECT OVERVIEW

INCOMPATIBLE DEVELOPMENT—10 U.S.C. § 2684A

- For decades, the land surrounding Hart's Lake—one of Michigan's last undeveloped lake properties—was a prime target for residential and commercial development, which constrained Fort Custer's ability to conduct full live-fire training.
- To resolve this conflict, Fort Custer partnered with the Kellogg Foundation and leveraged REPI funding to permanently preserve the area, creating a long-term protective buffer that supports both military readiness and community interests.
- This effort restored Fort Custer's ability to fully utilize a previously restricted range, while community partners now manage the property as a public conservation area that supports fishing, hiking, birdwatching, and other low-impact recreational activities.

A photograph showing a group of soldiers in camouflage uniforms marching along a paved path in a wooded area. They are carrying gear and appear to be on a training exercise.



FORT CUSTER

KEY FISCAL YEAR MILESTONES AT FORT CUSTER*

2006

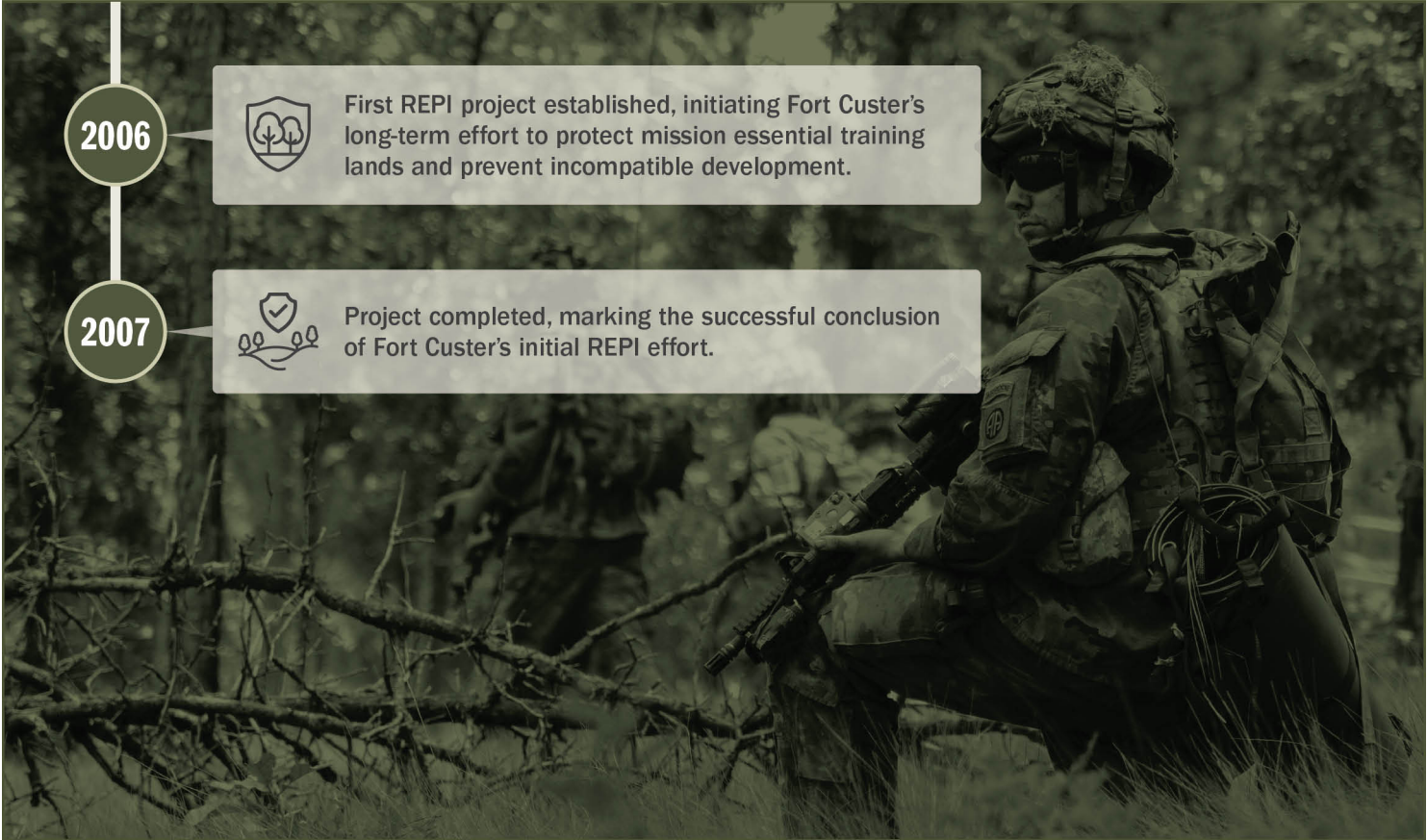


First REPI project established, initiating Fort Custer's long-term effort to protect mission essential training lands and prevent incompatible development.

2007



Project completed, marking the successful conclusion of Fort Custer's initial REPI effort.



* These milestones demonstrate how the installation is strategically utilizing the REPI Program to mitigate encroachment risks and enhance mission assurance. While not exhaustive, the list highlights the various approaches installations are using to preserve critical testing and training capabilities essential to national defense.



Subscribe to the REPI Program Listserv by scanning the QR code.
For more information about the REPI Program and supportive DOD efforts, please visit www.repi.mil.