



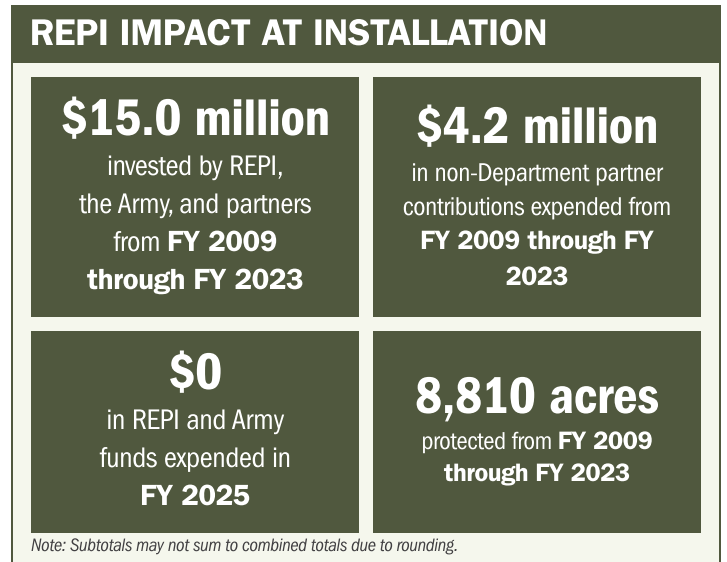
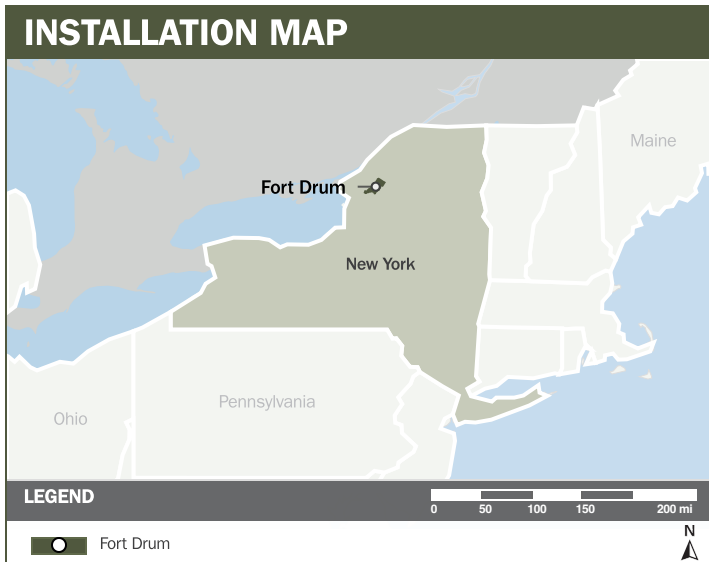
FORT DRUM

ABOUT THE INSTALLATION

Fort Drum, home to the 10th Mountain Division, one of the Army's most frequently deployed units serves as the premier training center in the Northeast. The installation supports the full spectrum of Army training requirements with dozens of live-fire ranges, urban operations sites, and aviation training areas. Designated as the Northeast Regional Collective Training Center, Fort Drum provides training and mobilization support to 11 states, portions of Canada, and multiple service components, including the Army Reserve, National Guard, Air Force, and Marine Corps.

STRENGTHENING MISSION READINESS THROUGH REPI INVESTMENTS

The Department of War (DoW) Readiness and Environmental Protection Integration (REPI) Program has played a critical role in supporting Fort Drum's long-term operational success. Through strategic land conservation and partnership-driven investments, REPI funding has helped prevent incompatible development, preserve training flexibility, and sustain critical capabilities beyond the installation boundary.



PROJECT OVERVIEW

INCOMPATIBLE DEVELOPMENT—10 U.S.C. § 2684A

- Fort Drum's mission is threatened by increasing residential and commercial development near the installation that heightens the risk of noise conflict, smoke, and vibration from live-fire weapons, ordnance use, armored vehicle maneuvering, and aviation operations.
- Nearby residential and commercial construction are also expected to increase. Noise and smoke from live-fire weapons, as well as use of ordnance, tanks, and aircraft all present potential conflicts with this increasing development.
- To address these threats, Fort Drum is leveraging REPI Program authorities under 10 U.S.C. § 2684a to ensure the surrounding land remains compatible, preserving training flexibility and deployment operations.





FORT DRUM

PROJECT OVERVIEW (CONTINUED)

INSTALLATION RESILIENCE —10 U.S.C. § 2684A

- Fort Drum is proactively preparing for potential future species listings, such as the monarch butterfly and other pollinators, by developing mitigation strategies that benefit the greatest number of species, ensuring continued access to key training lands.
- This project preserves mission-critical areas that support live-fire and maneuver training, including invasive-species control, forest management, and, when needed, the conversion of row crops to native grasslands.
- The installation will need to use off-post land for carbon sequestration in order to maintain open areas on the installation for military training and operational flexibility. By preserving and connecting off-post habitat for the endangered Indiana bat and migratory birds, Fort Drum reduces regulatory pressures, prevents incompatible residential development, and strengthens the long-term resilience of training lands.



KEY FISCAL YEAR MILESTONES AT FORT DRUM*

2009



First REPI project was established, launching Fort Drum's long-term effort to prevent encroachment and protect mission essential training capabilities.

2018



Completion of the Office of Local Defense Community Cooperation Installation Readiness Program Study, identifying key resilience challenges and informing future REPI priorities.

2022



Fort Drum's original REPI project concluded.

* These milestones demonstrate how the installation is strategically utilizing the REPI Program to mitigate encroachment risks and enhance mission assurance. While not exhaustive, the list highlights the various approaches installations are using to preserve critical testing and training capabilities essential to national defense.



Subscribe to the REPI Program Listserv by scanning the QR code.
For more information about the REPI Program and supportive DOD efforts, please visit www.repi.mil.