



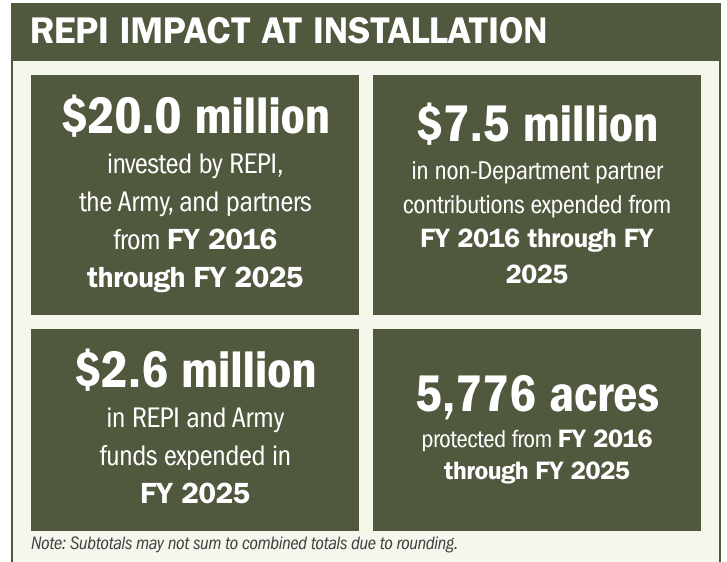
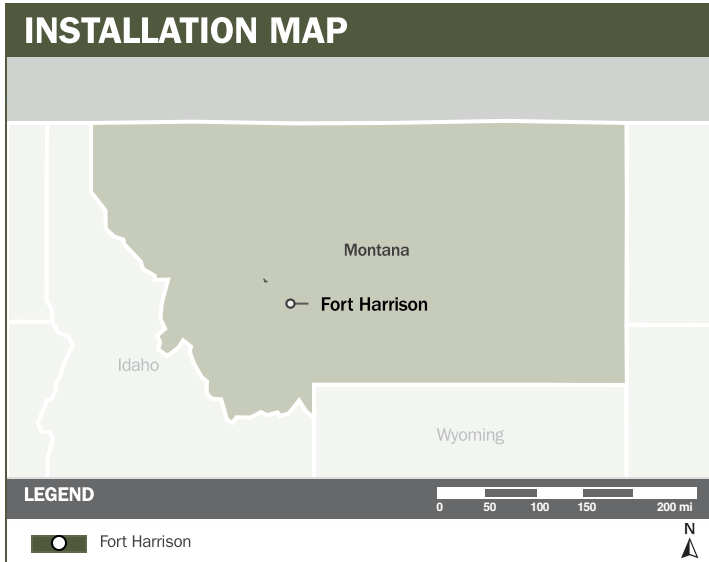
FORT HARRISON

ABOUT THE INSTALLATION

Fort Harrison is a designated Maneuver Training Center–Light with critical training facilities and ranges for National Guard, Reserve, and active-duty personnel across all Services. Its ranges, maneuver areas, and specialized training sites are purpose-built to support individual and collective training for Special Forces units up to battalion level, making special operations forces a consistent and significant user of the installation. Together with the Limestone Hills Training Area, Fort Harrison supports a wide spectrum of training, making it a vital platform for units preparing for missions.

STRENGTHENING MISSION READINESS THROUGH REPI INVESTMENTS

The Department of War (DoW) Readiness and Environmental Protection Integration (REPI) Program has played a critical role in supporting Fort Harrison’s long-term operational success. Through strategic land conservation and partnership-driven investments, REPI funding has helped prevent incompatible development, preserve training flexibility, and protect mission-critical capabilities beyond the installation boundary.



PROJECT OVERVIEW

INCOMPATIBLE DEVELOPMENT—10 U.S.C. § 2684A

- Fort Harrison faces constant development pressure, with urban encroachment already generating conflicts and complaints related to noise, vibration, and dust from mission-essential training activities.
- Growing populations in surrounding communities directly affect training and operational flexibility, particularly for exercises involving detonations, low-altitude aviation, and nighttime operations, which are increasingly challenged by safety concerns, community complaints, and light pollution.
- To counter these threats, Fort Harrison is leveraging REPI Program funds under 10 U.S.C. § 2684a to protect critical training land.





FORT HARRISON

PROJECT OVERVIEW (CONTINUED)

INSTALLATION RESILIENCE—10 U.S.C. § 2684A

- Fort Harrison’s training calendar is already constrained by Montana’s short summer season, and red-flag conditions further reduce available training days each year. Wildfire risk continues to rise as fine fuels dry out during the summer.
- July through September is the installation’s busiest training period, yet it coincides with peak wildfire season. Fuel loads have built up over time due to the absence of cattle grazing and limited prescribed fire. Growing development further restricts opportunities for controlled burns, increasing red-flag days.
- Leveraging 10 U.S.C. § 2684a, this project reduces wildfire risk, strengthens natural noise and dust buffering, mitigates flood impacts, and prevents incompatible development on adjacent lands, actions that collectively enhance Fort Harrison’s long-term training resilience and protect mission-essential readiness activities.



KEY FISCAL YEAR MILESTONES AT FORT HARRISON *

2016

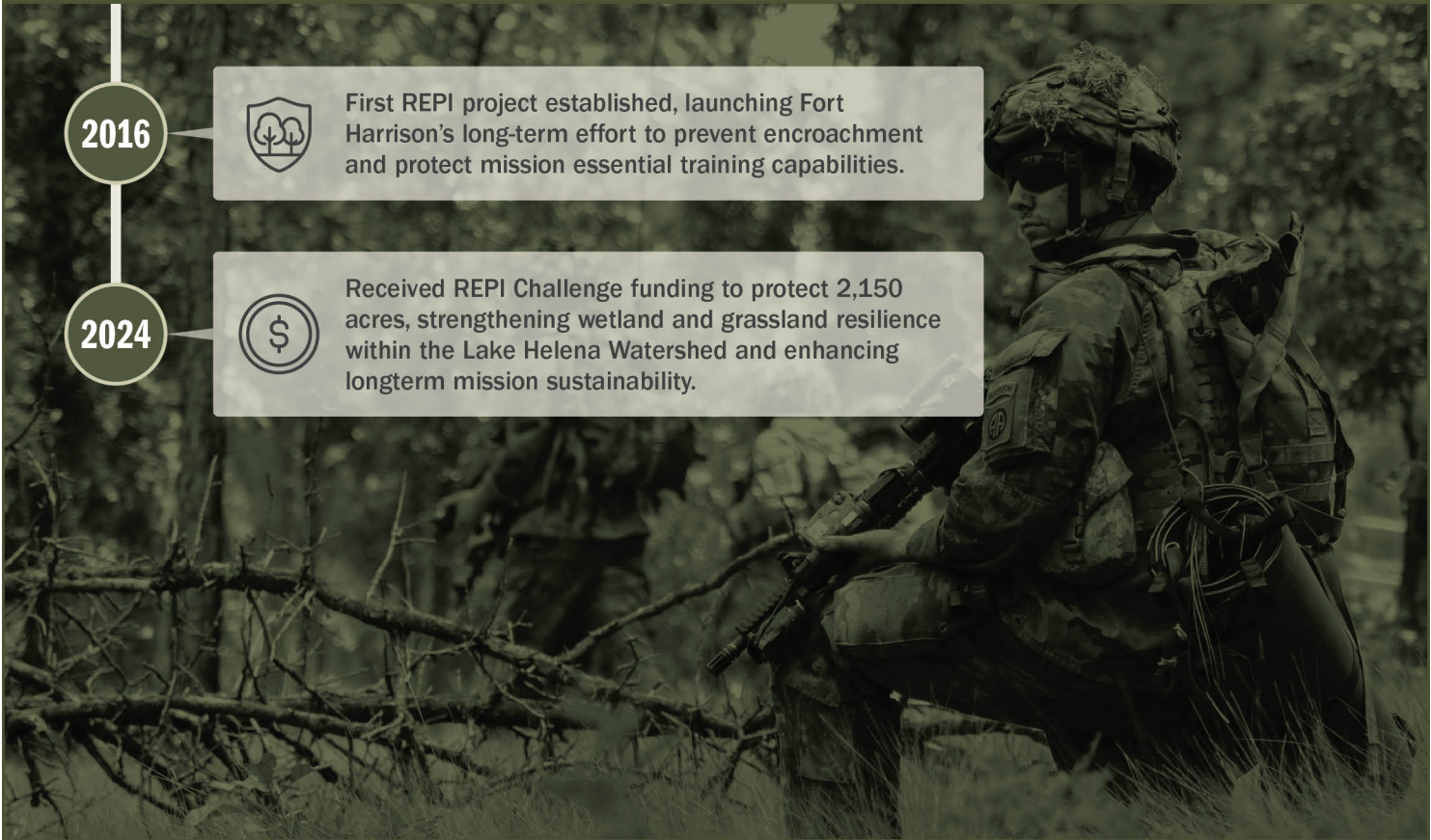


First REPI project established, launching Fort Harrison’s long-term effort to prevent encroachment and protect mission essential training capabilities.

2024



Received REPI Challenge funding to protect 2,150 acres, strengthening wetland and grassland resilience within the Lake Helena Watershed and enhancing longterm mission sustainability.



* These milestones demonstrate how the installation is strategically utilizing the REPI Program to mitigate encroachment risks and enhance mission assurance. While not exhaustive, the list highlights the various approaches installations are using to preserve critical testing and training capabilities essential to national defense.



Subscribe to the REPI Program Listserv by scanning the QR code.
For more information about the REPI Program and supportive DOD efforts, please visit www.repi.mil.