



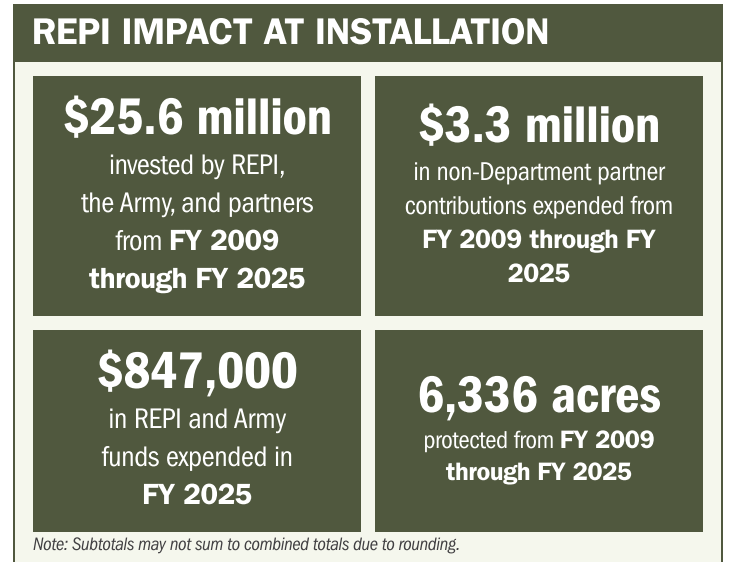
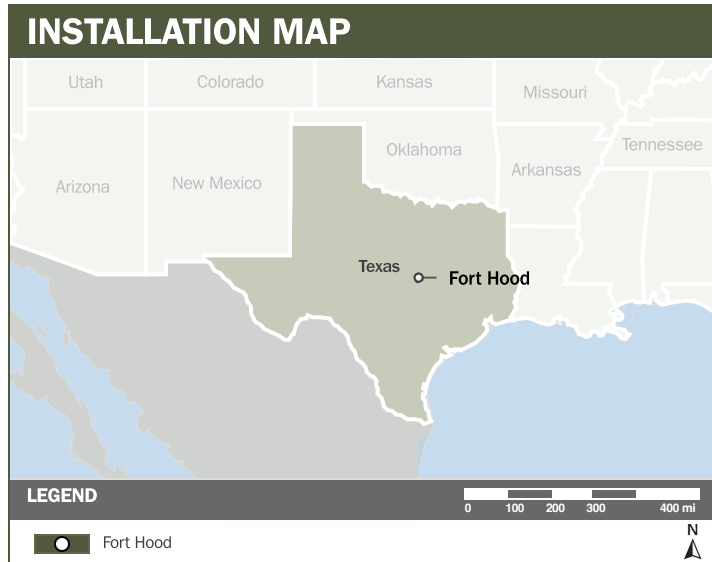
FORT HOOD

ABOUT THE INSTALLATION

Fort Hood is the largest active-duty armored installation in the Armed Services, spanning 218,823 acres in central Texas. Home to nearly 41,000 soldiers, the installation supports some of the most intensive and diverse training programs in the contiguous United States. Headquarters III Corps, the 1st Cavalry Division, the 1st Army Division West, and numerous other units and organizations are based at Fort Hood. Training activities range from individual weapons qualification to large-scale battalion and brigade task force operations, joint exercises, mechanized maneuver training, and air operations. The size, terrain, and range capabilities of Fort Hood enable the full spectrum of training required to maintain combat-ready armored and aviation forces.

STRENGTHENING MISSION READINESS THROUGH REPI INVESTMENTS

The Department of War (DoW) Readiness and Environmental Protection Integration (REPI) Program has played a critical role in supporting Fort Hood's long-term operational success. Through strategic land conservation and partnership-driven investments, REPI funding has helped prevent incompatible development, preserve training flexibility, and sustain mission-essential capabilities beyond the installation boundary.



PROJECT OVERVIEW

INCOMPATIBLE DEVELOPMENT—10 U.S.C. § 2684A

- Fort Hood's heavy and continuous training load creates significant encroachment concerns with the surrounding communities of Killeen, Copperas Cove, Gatesville, and other adjacent areas. Growing residential and commercial development increases the risk of conflicts with noise, dust, smoke, and the dark-night conditions required for realistic training.
- Incompatible development can lead to restrictions on mission-essential activities, including live-fire exercises, maneuver training, and aviation operations, directly affecting Fort Hood's ability to sustain full-spectrum readiness.







FORT HOOD

PROJECT OVERVIEW (CONTINUED)

- To counter these threats, Fort Hood is leveraging the REPI Program funds under 10 U.S.C. § 2684a to protect undeveloped lands, particularly those near heavily used maneuver corridors and live-fire ranges, ensuring long-term compatibility with the installation's critical missions.

KEY FISCAL YEAR MILESTONES AT FORT HOOD*

2009  First REPI project was established, initiating Fort Hood's long-term effort to prevent encroachment and protect mission essential training capabilities.

2016  Fort Hood received REPI Challenge funding to protect more than 1,000 acres in support of military readiness, conservation objectives, and the preservation of working lands.

* These milestones demonstrate how the installation is strategically utilizing the REPI Program to mitigate encroachment risks and enhance mission assurance. While not exhaustive, the list highlights the various approaches installations are using to preserve critical testing and training capabilities essential to national defense.



Subscribe to the REPI Program Listserv by scanning the QR code.
For more information about the REPI Program and supportive DOD efforts, please visit www.repi.mil.