



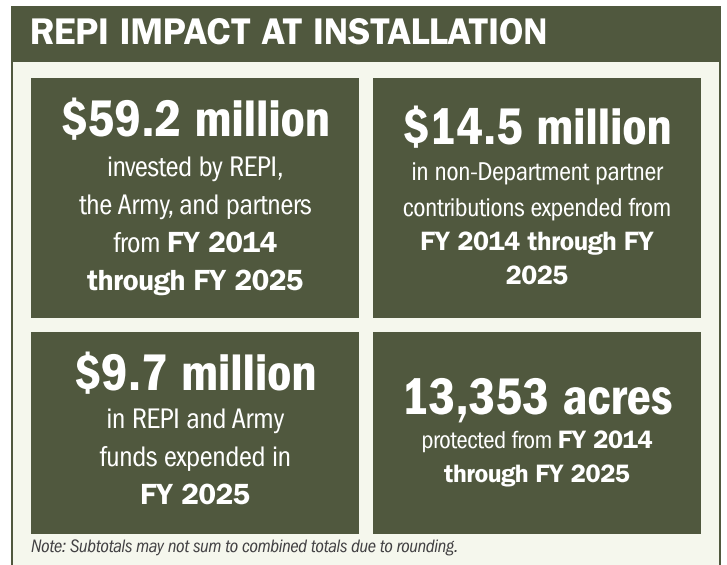
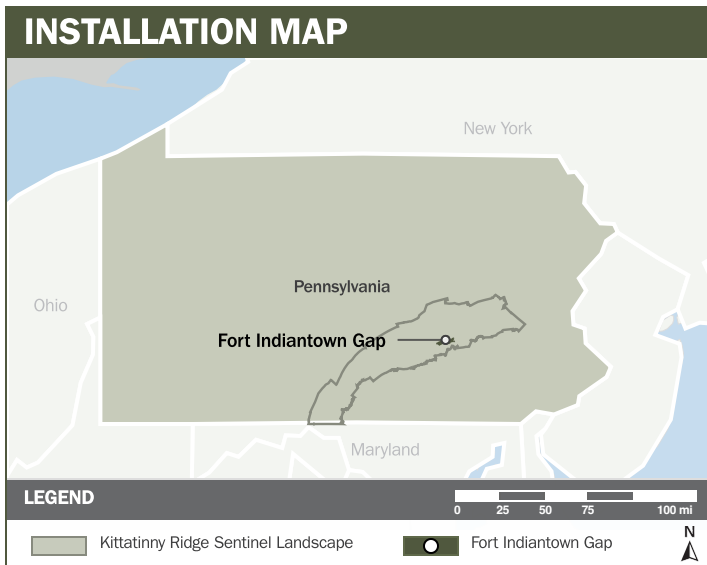
# FORT INDIANTOWN GAP

## ABOUT THE INSTALLATION

Fort Indiantown Gap (FIG) is located in Pennsylvania’s Appalachian Mountains within the Kittatinny Ridge Sentinel Landscape and is one of the nation’s busiest National Guard Training Centers, supporting more than 100,000 troops annually. As headquarters of the Pennsylvania Army National Guard—the second-largest Guard organization—FIG is a commander-centric, combat-focused installation that provides critical training for active-duty and reserve units across all Services. It also hosts the Eastern Army Aviation Training Site, which delivers aviation instruction, including procedural training, aircraft qualifications, and utility and cargo helicopter training.

## STRENGTHENING MISSION READINESS THROUGH REPI INVESTMENTS

The Department of War (DoW) Readiness and Environmental Protection Integration (REPI) Program has played a critical role in supporting FIG’s long-term operational success. Through strategic land conservation and partnership-driven investments, REPI funding has helped prevent incompatible development, preserve training flexibility, and sustain critical capabilities beyond the installation boundary.



## PROJECT OVERVIEW

### INCOMPATIBLE DEVELOPMENT—10 U.S.C. § 2684A

- The installation safeguards critical aviation training facilities and off-post routes that remain vulnerable to incompatible development.
- Encroachment pressures also threaten ground-based training, with potential impacts on small-arms and artillery exercises, the air-to-ground range, and the ammunition supply point.
- To counter these risks, FIG is leveraging REPI authority under 10 U.S.C. § 2684a to protect key training land, reducing threats to night-vision operations, low-altitude flight, and unmanned aerial systems.





# FORT INDIANTOWN GAP

## PROJECT OVERVIEW (CONTINUED)

### Habitat Preservation—10 U.S.C. § 2684A

- FIG hosts multiple threatened and endangered species in the surrounding area, including the regal fritillary butterfly, frosted elfin, and golden-winged warbler, which can affect ground training and live-fire exercises.
- Potential impacts to training include temporal or locational restrictions on existing ranges and training areas, as well as constraints on planned range facilities.
- To prevent additional training constraints, FIG is using the REPI Program to relocate the regal fritillary butterfly to compatible off-post habitats, reducing future regulatory pressure on mission-essential training.



## KEY FISCAL YEAR MILESTONES AT FORT INDIANTOWN GAP\*

2013



Established first REPI project to proactively address incompatible development and protect mission critical training space beyond the installation boundary.

2024



Officially designated as the Kittatinny Ridge Sentinel Landscape with FIG being the anchoring installation. Partners in the Kittatinny Ridge Sentinel Landscape are focused on increasing coordinated and holistic land conservation and natural resource protection.

\* These milestones demonstrate how the installation is strategically utilizing the REPI Program to mitigate encroachment risks and enhance mission assurance. While not exhaustive, the list highlights the various approaches installations are using to preserve critical testing and training capabilities essential to national defense.



Subscribe to the REPI Program Listserv by scanning the QR code.  
For more information about the REPI Program and supportive DOD efforts, please visit [www.repi.mil](http://www.repi.mil).