



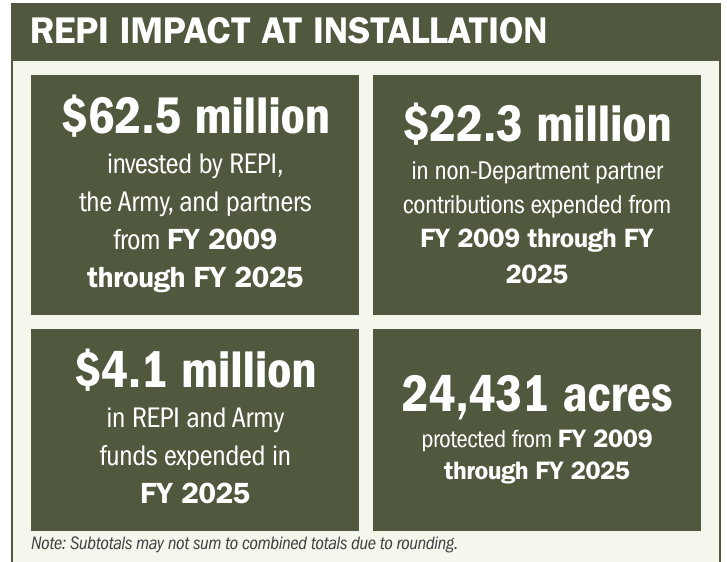
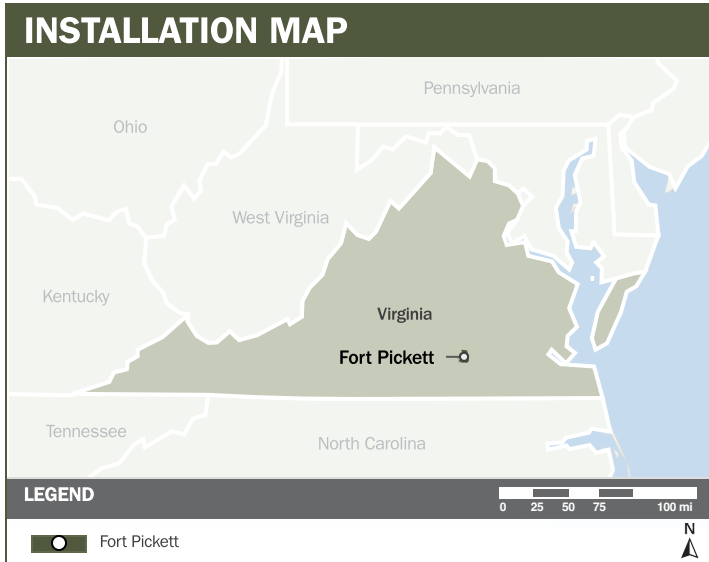
FORT PICKETT

ABOUT THE INSTALLATION

Fort Pickett is a 42,000-acre Joint Training Center run by the Virginia Army National Guard and is among the Army National Guard's busiest training sites. It offers extensive live-fire and maneuver ranges and contains the largest block of restricted special-use airspace in the mid-Atlantic, supporting intensive fixed-wing, rotary-wing, and unmanned aircraft training. The installation consistently ranks first in active-component man-days and third in total man-days across all Guard training centers, and it serves as a premier training venue for Marine Corps, Navy ground forces, and Special Warfare units.

STRENGTHENING MISSION READINESS THROUGH REPI INVESTMENTS

The Department of War (DoW) Readiness and Environmental Protection Integration (REPI) Program has played a critical role in supporting Fort Pickett's long-term operational success. Through strategic land conservation and partnership-driven investments, REPI funding has helped prevent incompatible development, preserve training flexibility, and sustain critical capabilities beyond the installation boundary.



PROJECT OVERVIEW

INCOMPATIBLE DEVELOPMENT—10 U.S.C. § 2684A

- Fort Pickett's mission readiness depends on extensive live fire and maneuver training, including firing points, landing zones, and infrastructure that support wheeled, armored, and aviation operations.
- The primary encroachment threat is incompatible development that generates noise, smoke, safety, and light pollution concerns, particularly during low-altitude aviation training and nighttime operations.
- To mitigate these threats, Fort Pickett is leveraging REPI Program funds under 10 U.S.C. § 2684a to exposure to encroachment, safeguard training corridors, and help ensure that mission essential activities and overall readiness are preserved for the long term.





FORT PICKETT

PROJECT OVERVIEW (CONTINUED)

INSTALLATION RESILIENCE—10 U.S.C. § 2684A

- In addition to preventing incompatible development and protecting Fort Pickett’s training capabilities, the installation relies on more than 500 acres of marine training space and 12 miles of navigable waterways.
- These areas face risks from shoreline development, operational security degradation, and restrictions associated with protected aquatic species. The watershed that feeds the installation’s sole drinking water source is also vulnerable to siltation from upstream development.
- REPI investments protect agricultural land, reducing erosion and siltation threats to Fort Pickett’s drinking-water reservoir, while conserving timberlands preserves canopy cover that moderates surface temperatures and reduces wind impacts, strengthening the installation’s training environment and long-term installation resilience.



KEY FISCAL YEAR MILESTONES AT FORT PICKETT*

2009



Fort Pickett established its first REPI project, developing a long-term defense partnership to protect the extensive live fire and maneuver training areas.



* These milestones demonstrate how the installation is strategically utilizing the REPI Program to mitigate encroachment risks and enhance mission assurance. While not exhaustive, the list highlights the various approaches installations are using to preserve critical testing and training capabilities essential to national defense.



Subscribe to the REPI Program Listserv by scanning the QR code.
For more information about the REPI Program and supportive DOD efforts, please visit www.repi.mil.