



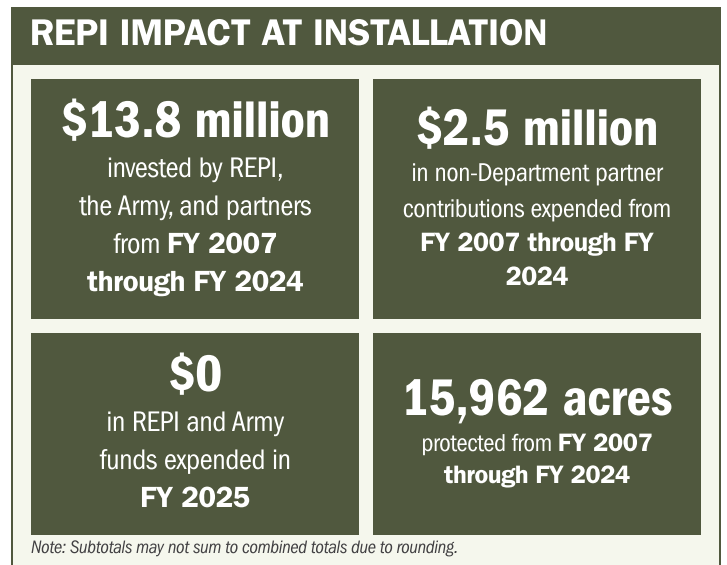
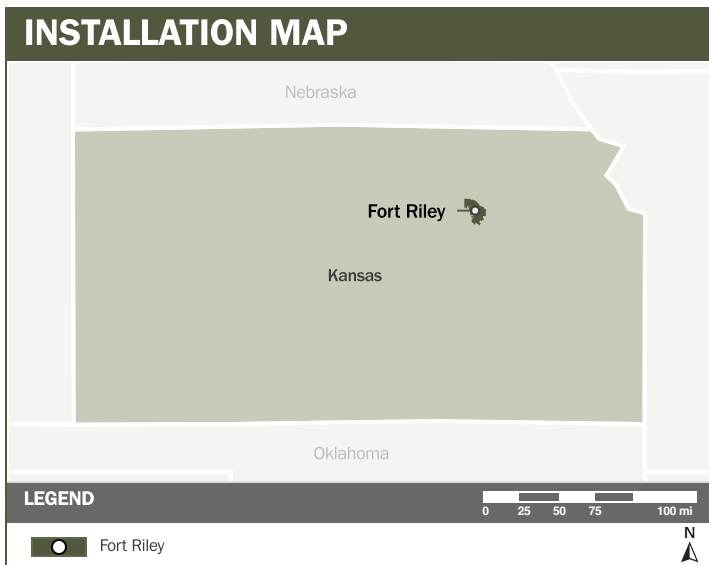
FORT RILEY

ABOUT THE INSTALLATION

Fort Riley is a Regional Collective Training Capability site that provides joint, interagency, and multinational training across a full spectrum of combined-arms operations. It is the Army's only installation capable of conducting battalion- and company-level combined-arms live-fire exercises entirely within its maneuver area, supported by ranges that accommodate nearly every Army weapon system. With unrestricted airspace, Federal Aviation Administration–approved corridors for unmanned and manned aircraft, and exceptional year-round aviation conditions, Fort Riley enables robust air-ground integration and supports more than 21,000 helicopter flight hours and 10,000 monthly air traffic operations. Protecting this airspace and maneuver land from encroachment is essential to sustaining Fort Riley's ability to build, train, and deploy combat-ready forces for Decisive Action as part of Joint and multinational teams.

STRENGTHENING MISSION READINESS THROUGH REPI INVESTMENTS

The Department of War (DoW) Readiness and Environmental Protection Integration (REPI) Program has played a critical role in supporting Fort Riley's long-term operational success. Through strategic land conservation and partnership-driven investments, REPI funding has helped prevent incompatible development, preserve training flexibility, and sustain mission-essential capabilities beyond the installation boundary.



PROJECT OVERVIEW

INCOMPATIBLE DEVELOPMENT—10 U.S.C. § 2684A

- Fort Riley faces multiple encroachment pressures, including live-fire artillery noise conflicts, radar interference, expanding development, and prescribed-fire limitations. Turbines and large-scale solar installations can disrupt radar signals, reduce pilot visibility, and compromise flight operations critical to readiness.
- Mitigation workarounds, such as radar reprogramming, create operational blind spots that degrade aviation training realism and limit the installation's ability to support joint air-ground integration.





FORT RILEY

PROJECT OVERVIEW (CONTINUED)

- To address these threats, Fort Riley is leveraging the REPI Program funds under 10 U.S.C. § 2684a to protect critical training land. These efforts safeguard key training corridors and ensure that operations in the artillery impact area, digital range complexes, and maneuver areas can be sustained well into the future.

KEY FISCAL YEAR MILESTONES AT FORT RILEY*



2007



First REPI project established, protecting 15,962 acres to buffer training lands and preventing incompatible development.

* These milestones demonstrate how the installation is strategically utilizing the REPI Program to mitigate encroachment risks and enhance mission assurance. While not exhaustive, the list highlights the various approaches installations are using to preserve critical testing and training capabilities essential to national defense.



Subscribe to the REPI Program Listserv by scanning the QR code.
For more information about the REPI Program and supportive DOD efforts, please visit www.repi.mil.