



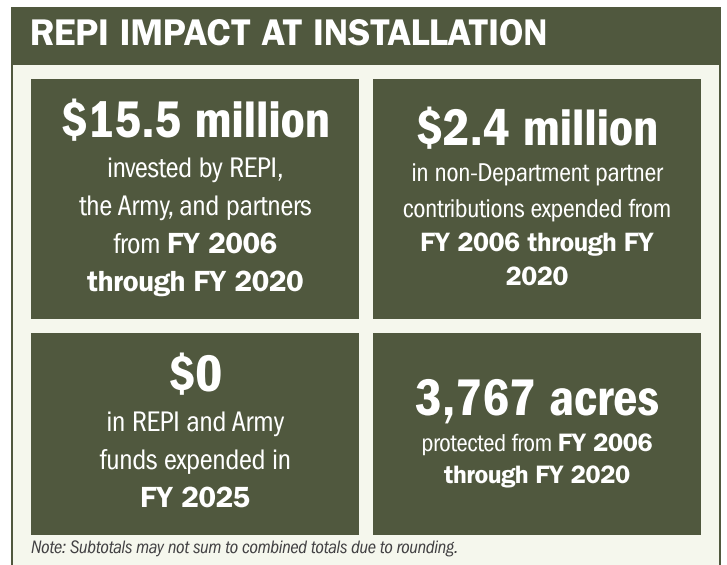
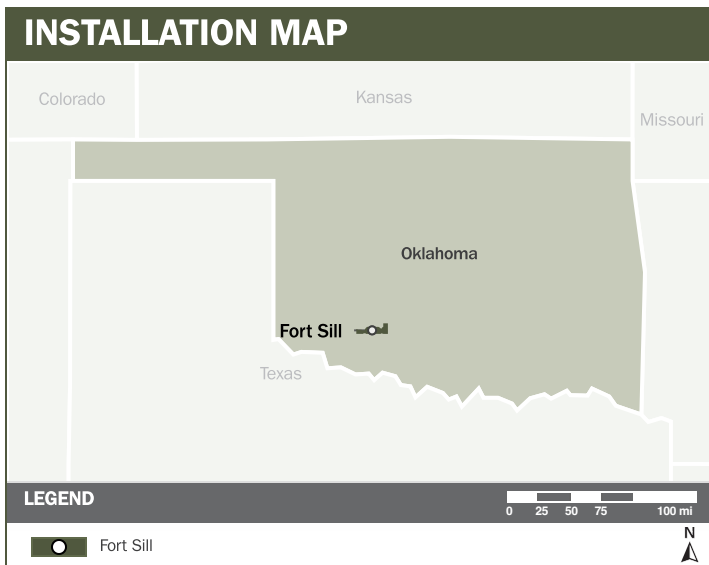
# FORT SILL

## ABOUT THE INSTALLATION

Fort Sill, spanning 94,000 acres in Oklahoma, is a vital Power Projection Platform and home to the U.S. Army Fires Center of Excellence. The installation hosts key units including the 75th and 214th Fires Brigades and the 30th and 31st Air Defense Artillery Brigades and serves as one of the Army's five Basic Combat Training sites. Its mission centers on training soldiers, developing artillery leaders, and ensuring force readiness across the Fires and Air Defense enterprise. Fort Sill's extensive ranges and airspace support joint and allied training for both ground and air missions. The East and West Ranges accommodate small arms, artillery, and live-aircraft bombing, while the Quanah/Falcon Range provides laser targeting and tactical airpower training. As a cornerstone of the Army's Fires and Air Defense missions, protecting the land surrounding Fort Sill is essential to sustaining uninterrupted training operations.

## STRENGTHENING MISSION READINESS THROUGH REPI INVESTMENTS

The Department of War (DoW) Readiness and Environmental Protection Integration (REPI) Program has played a critical role in supporting Fort Bragg's long-term operational success. Through strategic land conservation and partnership-driven investments, REPI funding helps prevent incompatible development, preserve training flexibility, and sustain mission-essential capabilities beyond the installation boundary.



## PROJECT OVERVIEW

### INCOMPATIBLE DEVELOPMENT—10 U.S.C. § 2684A

- Incompatible development around Fort Sill threatens to reduce available training days, limiting the installation's ability to conduct essential live-fire and maneuver exercises.
- Small- and large-caliber training ranges along Fort Sill's eastern boundary are now directly adjacent to open lands under imminent development pressure. If these lands are not preserved through REPI, small-arms ranges and artillery firing points may be permanently lost as expanding noise-sensitive development encroaches into established noise contours.



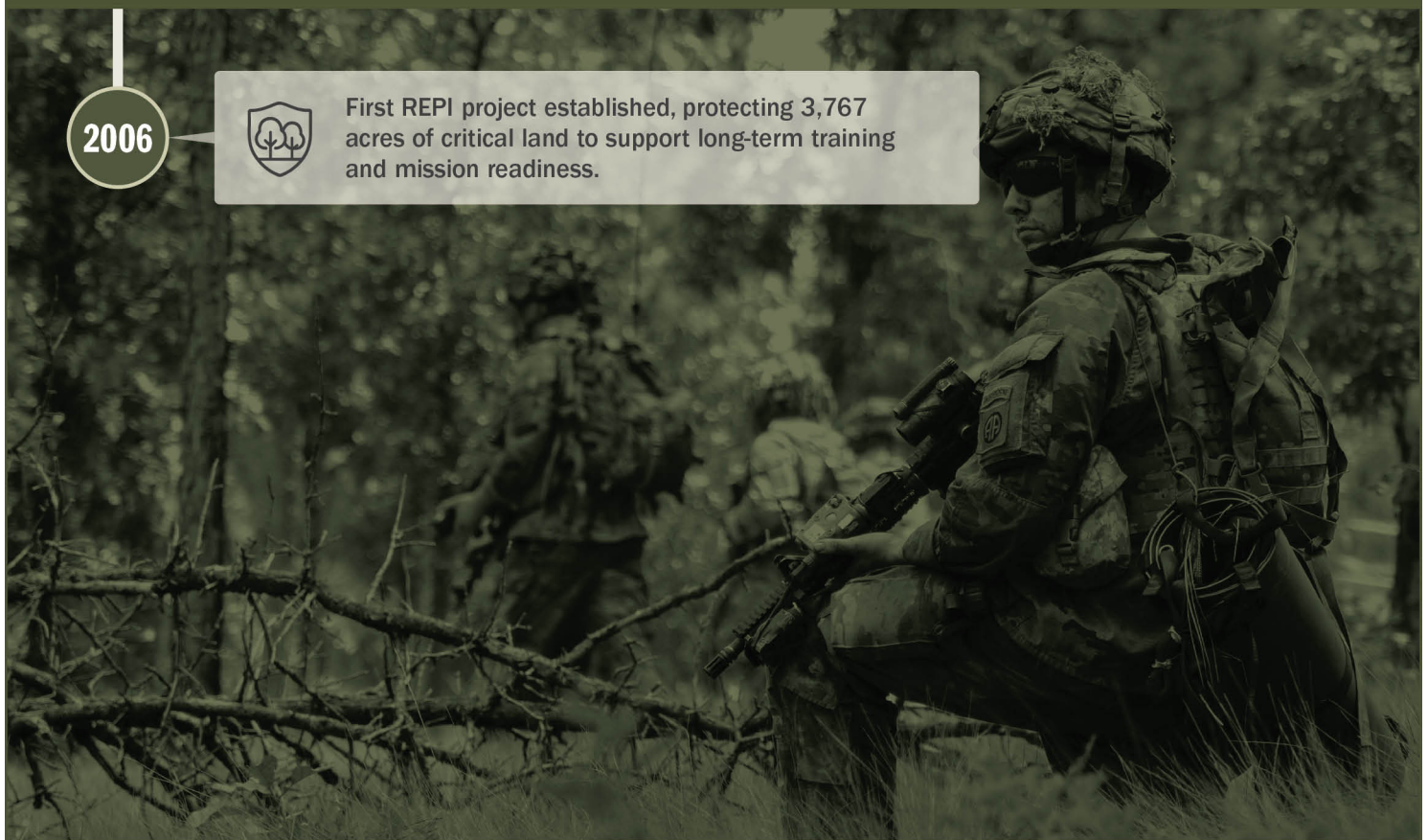


# FORT SILL

## PROJECT OVERVIEW (CONTINUED)

- To address these threats, Fort Sill is leveraging REPI Program funds under 10 U.S.C. § 2684a to protect critical training land. These efforts safeguard key areas along the installation’s southern and eastern boundaries, helping prevent further encroachment of incompatible residential development into the Zone III noise contours generated by Fort Sill’s artillery firing points.

## KEY FISCAL YEAR MILESTONES AT FORT SILL \*



\* These milestones demonstrate how the installation is strategically utilizing the REPI Program to mitigate encroachment risks and enhance mission assurance. While not exhaustive, the list highlights the various approaches installations are using to preserve critical testing and training capabilities essential to national defense.



Subscribe to the REPI Program Listserv by scanning the QR code.  
For more information about the REPI Program and supportive DoW efforts, please visit [www.repi.mil](http://www.repi.mil).