



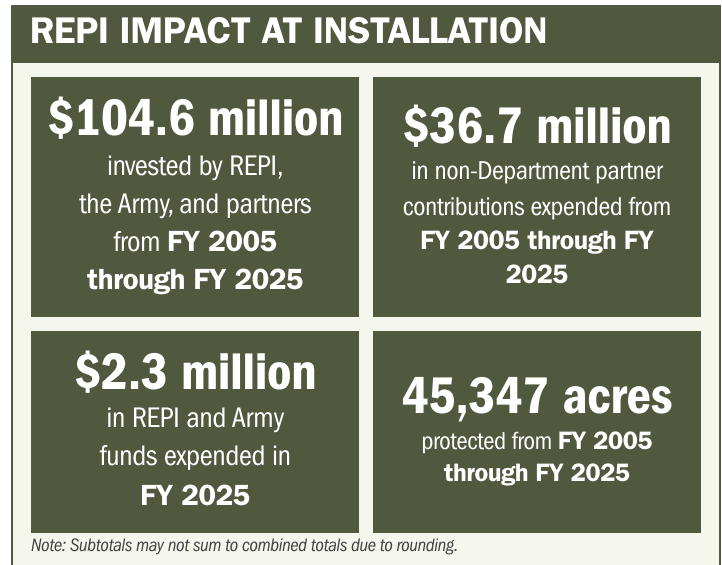
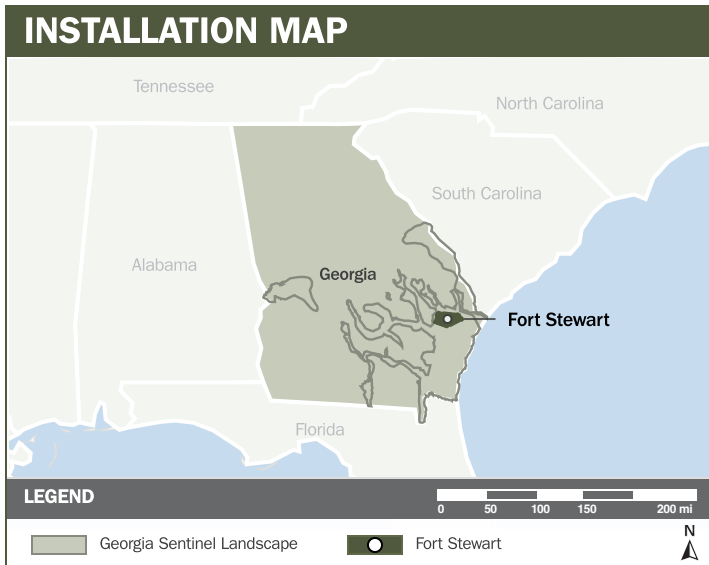
# FORT STEWART

## ABOUT THE INSTALLATION

Fort Stewart and Hunter Army Airfield are located in Georgia within the Georgia Sentinel Landscape. The largest Department of War (DoW) installation east of Mississippi River, Fort Stewart's 279,000 acres are home to the 3rd Infantry Division, which includes a division headquarters and headquarters battalion, two armored brigade combat teams, one aviation brigade, a division artillery, a sustainment brigade, and a combat sustainment support battalion, along with a maneuver enhancement brigade.

## STRENGTHENING MISSION READINESS THROUGH REPI INVESTMENTS

The DoW Readiness and Environmental Protection Integration (REPI) Program has played a critical role in supporting Fort Stewart's long-term operational success. Through strategic land conservation and partnership-driven investments, REPI funding has helped prevent incompatible development, preserve training flexibility, and sustain critical capabilities beyond the installation boundary.



## PROJECT OVERVIEW

- INCOMPATIBLE DEVELOPMENT—10 U.S.C. § 2684A**
- Fort Stewart's national defense mission depends on maintaining unrestricted use of installation-controlled airspace, which is essential for unmanned aerial vehicle operations, close air support integration, and multiple drop zones used for paratrooper training.
  - Preserving a rural buffer is critical to prevent constraints on training exercises that generate noise, smoke, and dust, and to prevent impacts from light pollution, radar interference, and other encroachment pressures that could restrict future mission sets.
  - To counter these threats, Fort Stewart is leveraging REPI Program funds under 10 U.S.C. § 2684a to protect natural lands adjacent to the installation, strengthening the installation's long-term resilience against internal and external encroachment and preserve operational freedom of action.





# FORT STEWART

## PROJECT OVERVIEW (CONTINUED)

### INSTALLATION RESILIENCE—10 U.S.C. § 2684A

- Fort Stewart conducts prescribed burns on more than 100,000 acres each year to reduce wildfire risk, maintain a mission-ready landscape, and support habitat for endangered species.
- Strategic land acquisitions protect Fort Stewart’s ability to conduct prescribed burns, reducing smoke management conflicts and directly supporting training by improving visibility, maneuverability, and wildfire prevention. Encroachment that restricts prescribed burning would degrade every mission set by increasing wildfire risk, reducing training effectiveness, and threatening at risk species.
- This project maintains a rural buffer around Fort Stewart, minimizing smoke and noise complaints, enhancing installation resilience, reducing flooding threats, and protecting the long-term viability of the training mission.



## KEY FISCAL YEAR MILESTONES AT FORT STEWART\*

- 2003** First REPI project established, protecting 43,771 acres of mission-critical training land and buffering Fort Stewart from incompatible development.
- 2012** Fort Stewart received REPI Challenge funding to help maintain mission-compatible landscapes across key training areas.
- 2018** Officially designated as the Georgia Sentinel Landscape with Fort Stewart as an anchoring installation.
- 2018** In 2019, Fort Stewart expanded their REPI priority areas to the south to help protect the corridor between Fort Stewart and the Marine Corps' Townsend Bombing Range. Protection of this corridor will allow for continued use of the airspace by manned and unmanned DoW systems.

\* These milestones demonstrate how the installation is strategically utilizing the REPI Program to mitigate encroachment risks and enhance mission assurance. While not exhaustive, the list highlights the various approaches installations are using to preserve critical testing and training capabilities essential to national defense.



Subscribe to the REPI Program Listserv by scanning the QR code.  
For more information about the REPI Program and supportive DOD efforts, please visit [www.repi.mil](http://www.repi.mil).