



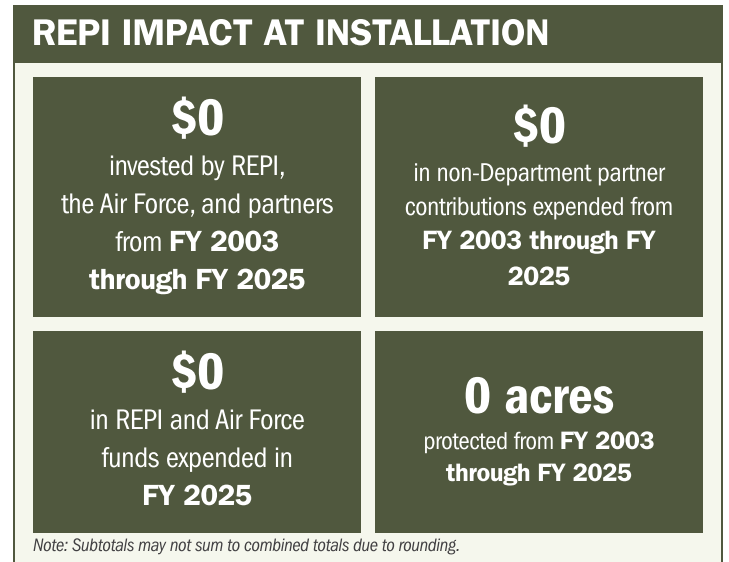
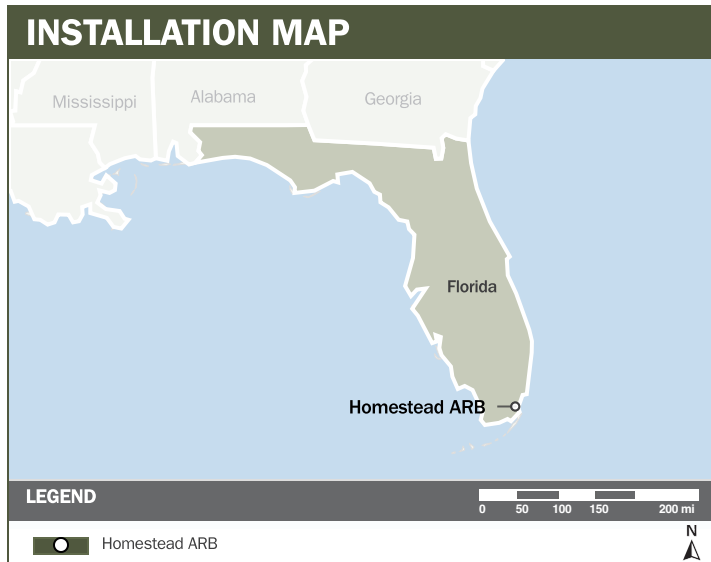
HOMESTEAD ARB

ABOUT THE INSTALLATION

Located at the southernmost tip of the continental United States, Homestead Air Reserve Base (ARB) provides a convenient launching point for military air operations in the Caribbean and Latin America. Home to the 482nd Fighter Wing (FW), the installation hosts year-round counter-land, counter-sea, and counter-air operations training to provide combat-ready airmen and airwomen. Homestead ARB's training mission requires both daytime and nighttime operations as well as low-altitude aviation and explosive ordnance disposal operations.

STRENGTHENING MISSION READINESS THROUGH REPI INVESTMENTS

The Department of War's (DoW) Readiness and Environmental Protection Integration (REPI) Program has played a critical role in supporting Homestead ARB's long-term operational success. Through strategic land conservation and partnership-driven investments, REPI funding has helped prevent incompatible development, preserve training flexibility, and sustain critical capabilities beyond the installation boundary.



PROJECT OVERVIEW

INCOMPATIBLE DEVELOPMENT—10 U.S.C. § 2684A

- Dense urban development exacerbates noise and safety risks associated with Homestead ARB's vital aviation training and national security missions
- To ensure mission sustainment and community compatibility, Homestead ARB's REPI project conserves agricultural and natural lands near the installation, securing accident potential zones and enhancing public safety.
- Preserving farmland and natural lands prevents development pressures that could restrict installation operations, while supporting Miami-Dade County's economically vital agricultural industry.





HOMESTEAD ARB

KEY FISCAL YEAR MILESTONES AT HOMESTEAD ARB*

2021



Received initial REPI funding allocated to launch encroachment-reduction projects supporting mission assurance.



* These milestones demonstrate how the installation is strategically utilizing the REPI Program to mitigate encroachment risks and enhance mission assurance. While not exhaustive, the list highlights the various approaches installations are using to preserve critical testing and training capabilities essential to national defense.



Subscribe to the REPI Program Listserv by scanning the QR code.
For more information about the REPI Program and supportive DoW efforts, please visit www.repi.mil.