



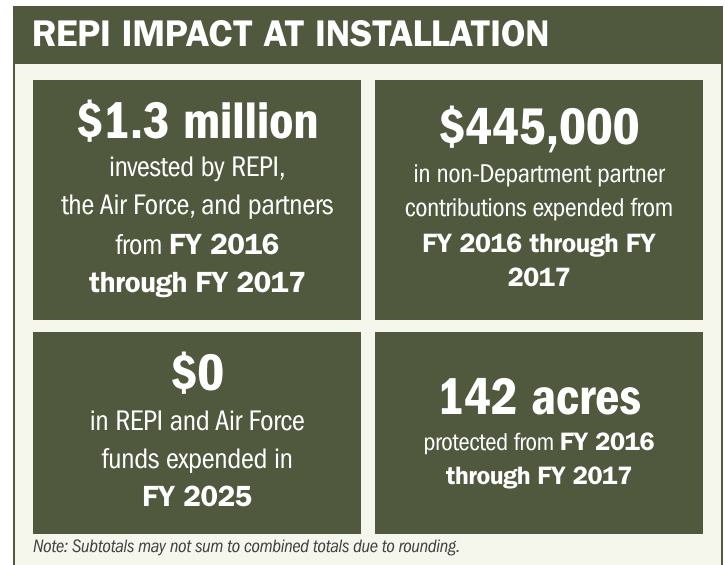
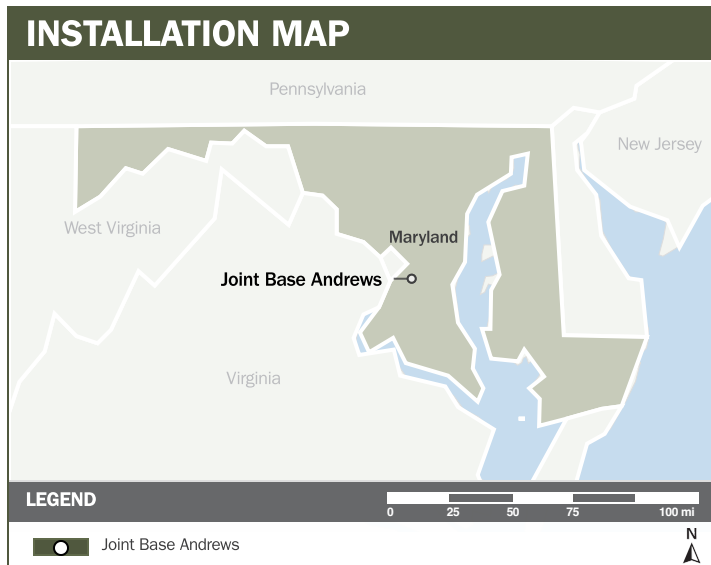
JOINT BASE ANDREWS

ABOUT THE INSTALLATION

Located just outside Washington, D.C., Joint Base Andrews (JBA) supports over 80 Federal, state, and commercial tenants across the National Capital Region (NCR). While home to a wide array of missions, it is best known as the base of operations for Air Force One. The 316th Wing hosts units across U.S. Air Force, Civil Air Patrol, U.S. Navy Reserve, U.S. Marine Corps Forces Reserve, U.S. Army, the Defense Intelligence Agency, and others. JBA's current mission set includes presidential and vice-presidential airlift, air sovereignty, aeromedical evacuation, air refueling, strategic airlift, and contingency-response helicopter operations.

STRENGTHENING MISSION READINESS THROUGH REPI INVESTMENTS

The Department of War's Readiness and Environmental Protection Integration (REPI) Program is essential to sustaining JBA's ability to execute five no-fail missions, including one operating continuously around the clock. Through REPI partnerships, the installation remains mission-ready and protected from encroachment pressures that could compromise air operations, training tempo, or strategic responsiveness.



PROJECT OVERVIEW

INCOMPATIBLE DEVELOPMENT—10 U.S.C. § 2684A

- JBA's location in the NCR exposes it to significant encroachment risks driven by development, competing land uses, and increasing pressure on airspace, noise compatibility, and mission operations.
- Fully functional runways and taxiways—critical to JBA's flying missions—are increasingly threatened by surrounding development demand.
- To counter these challenges, JBA is leveraging REPI authorities under 10 U.S.C. § 2684a to protect mission-critical operations and preserve the installation's ability to conduct uninterrupted training.





JOINT BASE ANDREWS

PROJECT OVERVIEW (CONTINUED)

HABITAT PRESERVATION—10 U.S.C. § 2684A

- JBA's location within Camp Springs, Maryland—an area historically defined by natural springs—has resulted in approximately 60 acres of wetlands within the airfield footprint.
- No suitable on-installation areas exist to offset required wetland mitigation, complicating compliance for planned airfield improvements.
- Through REPI partnerships, JBA is developing supplemental mitigation sites within the Middle Potomac–Anacostia–Occoquan Watershed and Camp Springs area to support future airfield upgrades and maintain mission continuity.



KEY FISCAL YEAR MILESTONES AT JOINT BASE ANDREWS*

2016



JBA established the first REPI Program project to address significant suburban growth and associated risks impacting the ability to conduct uninterrupted training.

2016



Approved in 2016, Prince George's County's Military Installation Overlay Zone extends over 38 square miles adjacent to JBA.



* These milestones demonstrate how the installation is strategically utilizing the REPI Program to mitigate encroachment risks and enhance mission assurance. While not exhaustive, the list highlights the various approaches installations are using to preserve critical testing and training capabilities essential to national defense.



Subscribe to the REPI Program Listserv by scanning the QR code.
For more information about the REPI Program and supportive DOD efforts, please visit www.repi.mil.