



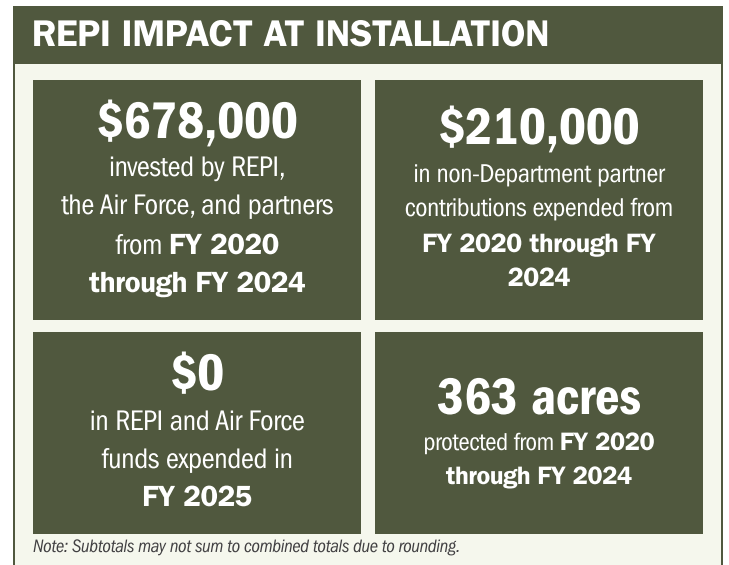
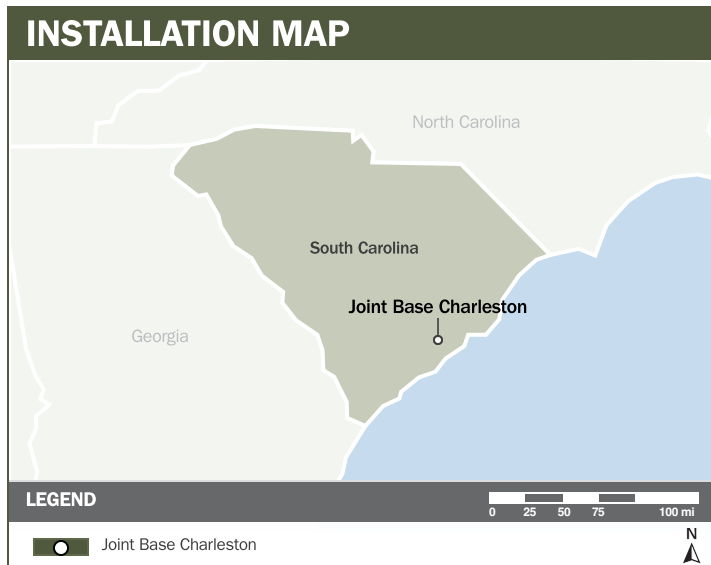
JOINT BASE CHARLESTON

ABOUT THE INSTALLATION

Joint Base (JB) Charleston is one of twelve Department of War joint bases and hosts more than 60 DoW and federal mission partners. The 628th Air Base Wing provides installation support to over 90,000 Airmen, Sailors, Soldiers, Marines, Coast Guardsmen, civilians, dependents, and retirees. JB Charleston executes several unique missions, including harbor security patrol operations, the Transportation Isolation System, and the Cooper River dredging mission. Its operational focus spans installation support, airlift and airdrop operations, Naval nuclear operator training, deployable logistics, multi-mission warfighter support, and interagency cooperation.

STRENGTHENING MISSION READINESS THROUGH REPI INVESTMENTS

The Department of War’s Readiness and Environmental Protection Integration (REPI) Program is essential to sustaining JB Charleston’s ability to conduct day-and-night assault airfield training, which prepares pilots to land in austere environments with limited or unimproved airstrips. Through REPI partnerships, Joint Base Charleston protects mission-critical training areas and airfield assets, ensuring uninterrupted access to the airspace and land needed for combat-credible readiness.



PROJECT OVERVIEW

INCOMPATIBLE DEVELOPMENT—10 U.S.C. § 2684A

- JB Charleston has experienced dense development, including urban growth and development near the installation.
- This development is highly incompatible with the airfield’s accident potential zones and threaten JB Charleston’s ability to host only one of three assault strips in the southeastern United States.
- To combat these threats, JB Charleston is leveraging REPI funds under 10 U.S.C. § 2684a to safeguard the only special operations low altitude tactical training mission as a critical asset.





JOINT BASE CHARLESTON

PROJECT OVERVIEW (CONTINUED)

HABITAT PRESERVATION—10 U.S.C. § 2684A

- JB Charleston’s North Auxiliary Airfield (NAAF) lies within the Southeast Wetlands Initiative area, which supports a wide range of bird species and winters up to 50 percent of all waterfowl in the Atlantic Flyway.
- NAAF is a mission-critical airfield supporting daily assault landing zone operations, airdrop missions, and paratrooper training, but inadequate zoning protections threaten long-term mission viability.
- JB Charleston is partnering with the REPI Program to preserve NAAF’s training capabilities while ensuring perpetual conservation of habitats for rare, threatened, and endangered species.



KEY FISCAL YEAR MILESTONES AT JOINT BASE CHARLESTON*

2020



Established the first REPI Program project to address dense development around the installation that could impact training and mission requirements.



* These milestones demonstrate how the installation is strategically utilizing the REPI Program to mitigate encroachment risks and enhance mission assurance. While not exhaustive, the list highlights the various approaches installations are using to preserve critical testing and training capabilities essential to national defense.



Subscribe to the REPI Program Listserv by scanning the QR code.
For more information about the REPI Program and supportive DOD efforts, please visit www.repi.mil.