



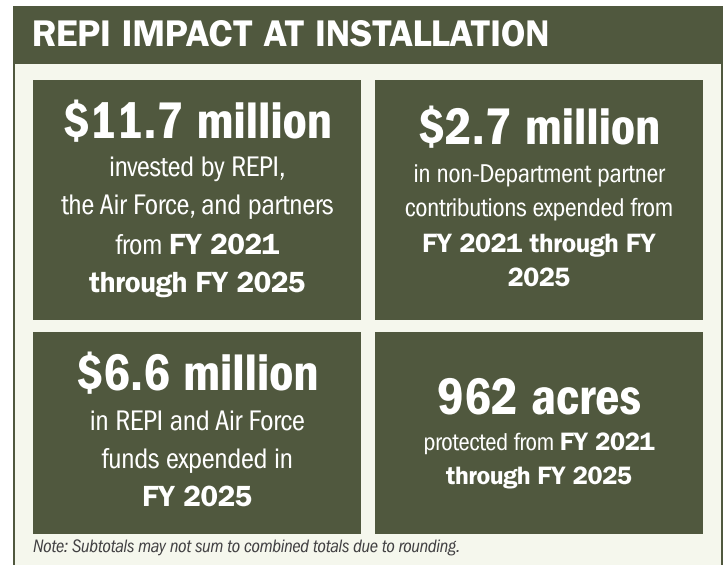
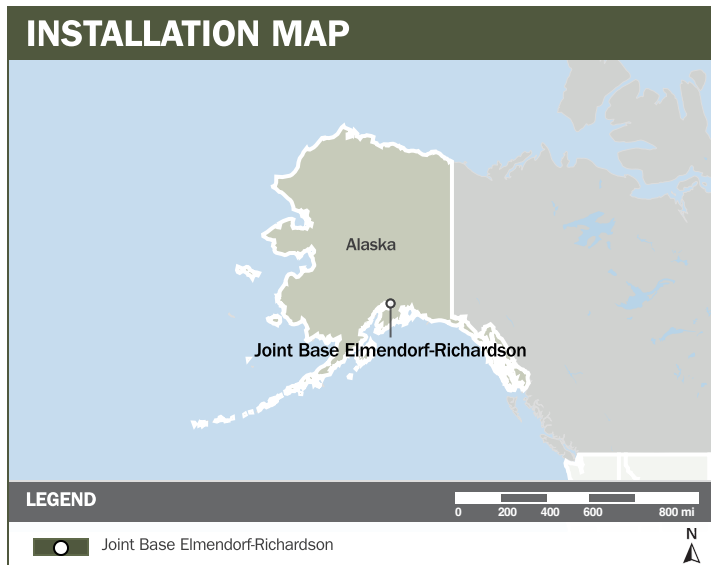
# JOINT BASE ELMENDORF-RICHARDSON

## ABOUT THE INSTALLATION

Joint Base Elmendorf–Richardson (JBER) is a frontline power-projection hub for Army and Department of the Air Force missions, securing U.S. advantages across the Arctic and Indo-Pacific. Its mission is to generate and deploy combat-ready Arctic forces capable of rapid global response. JBER hosts the 1st and 2nd Brigades of the 11th Airborne Division, whose training replicates real combat through extreme environmental stress, live-fire exercises, and diverse munitions that build precision and lethality under pressure. As a Pacific Air Forces installation, JBER integrates land, air, and space capabilities

## STRENGTHENING MISSION READINESS THROUGH REPI INVESTMENTS

The Department of War’s Readiness and Environmental Protection Integration (REPI) Program has been essential to preserving JBER’s ability to train and operate without restriction. By securing conservation easements around weapons-training areas and beneath key flight paths, REPI prevents incompatible development that could limit air operations, constrain live-fire training, or erode the realism required for combat-credible readiness.



## PROJECT OVERVIEW

### INCOMPATIBLE DEVELOPMENT—10 U.S.C. § 2684A

- JBER sits within Alaska’s most densely populated metropolitan area, where accelerating residential and commercial growth poses a direct threat to the installation’s ability to conduct realistic, combat-focused training.
- Development pressures along the northeastern border of the installation have resulted in noise complaints and trespassing challenges, which in turn have caused delays of training and testing activities on base.
- To protect its mission and mitigate future restrictions, JBER is working with partners and leveraging REPI funds under 10 U.S.C. § 2684a to acquire restrictive use easements on properties that lie adjacent to the installation’s training and maneuver ranges.





# JOINT BASE ELMENDORF-RICHARDSON

## PROJECT OVERVIEW (CONTINUED)

### INSTALLATION RESILIENCE—10 U.S.C. § 2684A

- Preserving the land surrounding JBER is essential to sustaining a combat-credible training environment that exposes soldiers to the same conditions, stressors, and operational demands they will face in real-world missions.
- The undeveloped areas around the installation—comprised of parks, wetlands, streams, lakes, and forests—support a wide range of wildlife, including bears and moose that rely on large, uninterrupted habitat to move and forage safely.
- Protecting this landscape through authorities under 10 U.S.C. § 2684a strengthens installation resilience by ensuring military training, community recreation, and vital natural habitats can coexist without compromising JBER’s operational readiness.



## KEY FISCAL YEAR MILESTONES AT JOINT BASE ELMENDORF-RICHARDSON\*

2021



JBER established the first REPI Program project to protect realistic training environments.



\* These milestones demonstrate how the installation is strategically utilizing the REPI Program to mitigate encroachment risks and enhance mission assurance. While not exhaustive, the list highlights the various approaches installations are using to preserve critical testing and training capabilities essential to national defense.



Subscribe to the REPI Program Listserv by scanning the QR code.  
For more information about the REPI Program and supportive DOD efforts, please visit [www.repi.mil](http://www.repi.mil).