



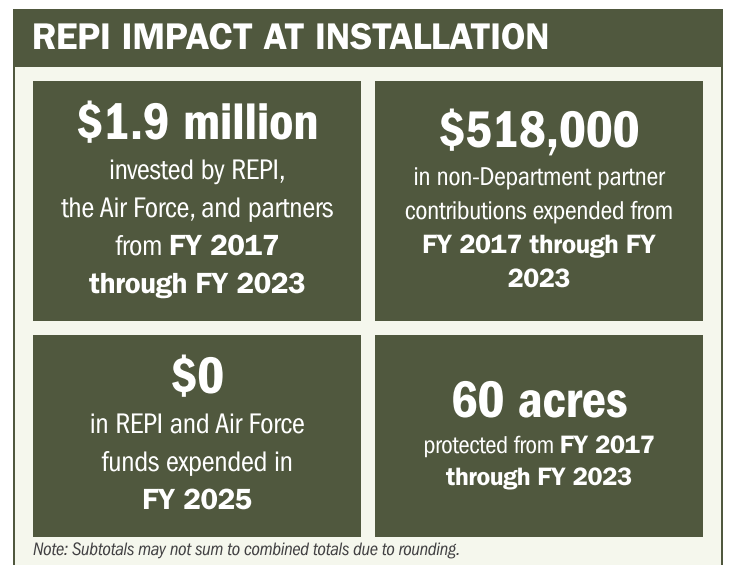
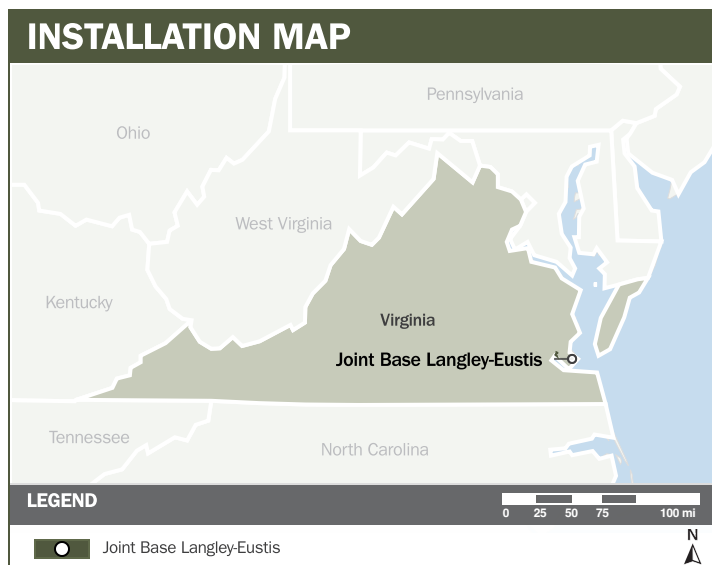
JOINT BASE LANGLEY-EUSTIS

ABOUT THE INSTALLATION

Joint Base Langley-Eustis (JBLE), located within the Tidewater Sentinel Landscape, is the United States Air Force’s oldest continuously operating Air Force base. As one of the most diverse installations in the Air Force, JBLE supports a wide range of air, land, and sea-based force providers and training missions. The 633d Air Base Wing serves as the host organization, while the 1st Fighter Wing—operating the F22A Raptor and T38A Talon—remains the installation’s primary tenant mission. Air Combat Command Headquarters is also located at JBLE, providing, training, equipping, and maintaining combat-ready forces for rapid deployment and ensuring strategic air defense forces remain prepared for air sovereignty and wartime defense requirements.

STRENGTHENING MISSION READINESS THROUGH REPI INVESTMENTS

The Department of War’s Readiness and Environmental Protection Integration (REPI) Program is essential to sustaining JBLE-Langley’s long-term mission capabilities by preventing encroachment that could restrict air operations, degrade training realism, or limit future mission growth.



PROJECT OVERVIEW

INCOMPATIBLE DEVELOPMENT—10 U.S.C. § 2684A

- The City of Hampton is approximately 95% developed, and as the city and private developers pursue infill opportunities, areas surrounding JBLE face increasing development pressure.
- These pressures threaten the installation’s accident potential zones, risk degrading flight mission capabilities, and increase the likelihood of encroachment on established flight paths.
- To counter these threats, JBLE is leveraging REPI funding under 10 U.S.C. § 2684a to ensure continued mission operations and protect flight readiness.





JOINT BASE LANGLEY-EUSTIS

PROJECT OVERVIEW (CONTINUED)

HABITAT PRESERVATION—10 U.S.C. § 2684A

- JBLE is surrounded by extensive wetlands, forests, and salt marshes, creating a highly active wildlife environment.
- Waterways near JBLE-Langley—including the Atlantic Flyway, which supports millions of migrating birds annually—elevate bird and wildlife aircraft strike hazards that can significantly impact training and flight safety.
- Securing parcels within the REPI project supports JBLE’s environmental stewardship in the Hampton Roads region while reducing bird-aircraft strike hazard (BASH) risks that pose serious threats to aircraft and aircrew.



KEY FISCAL YEAR MILESTONES AT JOINT BASE LANGLEY-EUSTIS*

2017



JBLE established the first REPI Program project to address significant suburban growth.

2020



JBLE completes 2020 Air Installations Compatible Use Zones Study of Wildlife and finds a significant hazard to flight operations.

2023



Tidewater Sentinel Landscape is officially designated with Joint Base Langley-Eustis as an anchoring installation.



* These milestones demonstrate how the installation is strategically utilizing the REPI Program to mitigate encroachment risks and enhance mission assurance. While not exhaustive, the list highlights the various approaches installations are using to preserve critical testing and training capabilities essential to national defense.



Subscribe to the REPI Program Listserv by scanning the QR code.
For more information about the REPI Program and supportive DOD efforts, please visit www.repi.mil.