



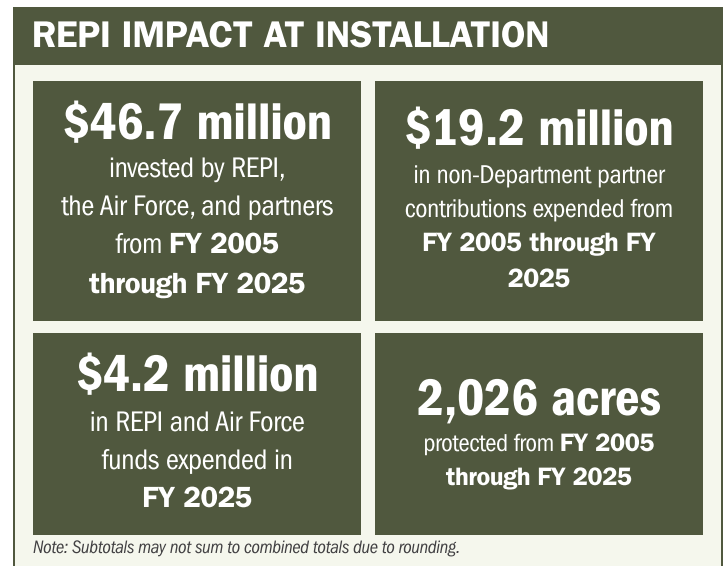
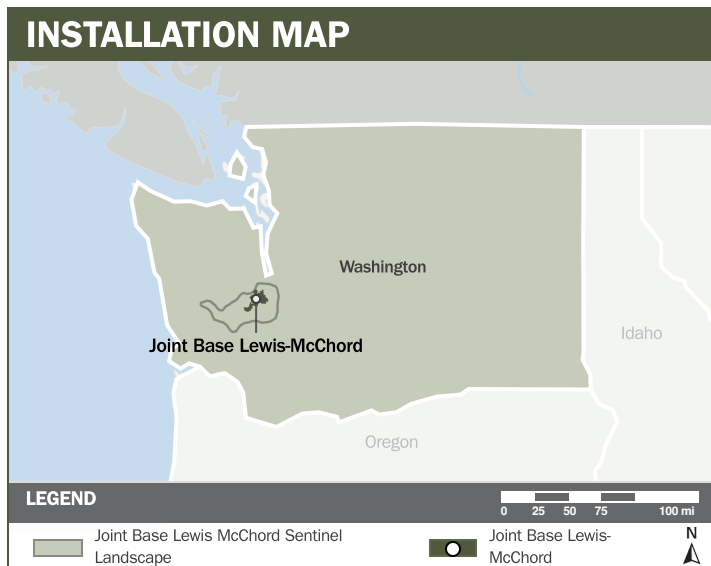
JOINT BASE LEWIS-MCCHORD

ABOUT THE INSTALLATION

Joint Base Lewis-McChord (JBLM), located within the Joint Base Lewis-McChord Sentinel Landscape, is the only Tier 1 Power Projection Platform on the West Coast and serves as the primary force provider for the Pacific Region. The installation's range complex includes four impact areas, 86 ranges, 23 training areas, seven closed-in training areas, numerous artillery and mortar firing points, and 13 drop zones, including military operations in urban terrain. JBLM also operates two airfields supporting both rotary and fixed-wing aircraft. The scale and diversity of ground and air training conducted at JBLM cannot be replicated elsewhere in western Washington. Its 63,000-acre block of undeveloped land provides training conditions unmatched anywhere else in the Puget Sound region.

STRENGTHENING MISSION READINESS THROUGH REPI INVESTMENTS

The Department of War's Readiness and Environmental Protection Integration (REPI) Program is essential to preserving JBLM's unique strategic position on the West Coast. Through REPI partnerships, JBLM reduces regulatory encroachment, protects training frequency and realism for modern weapons systems, and safeguards the installation's ability to rapidly project forces and respond to emerging threats.



PROJECT OVERVIEW

INCOMPATIBLE DEVELOPMENT—10 U.S.C. § 2684A

- JBLM's unencumbered training space is increasingly threatened by suburban development surrounding the installation.
- Continued growth could impose restrictions on airborne operations, demolition training, and artillery firing, while also undermining ecosystem and listed-species management by limiting the use of prescribed fire.
- To prevent these threats, JBLM is leveraging REPI funding under 10 U.S.C. § 2684a to protect training operations across the installation.





JOINT BASE LEWIS-MCCHORD

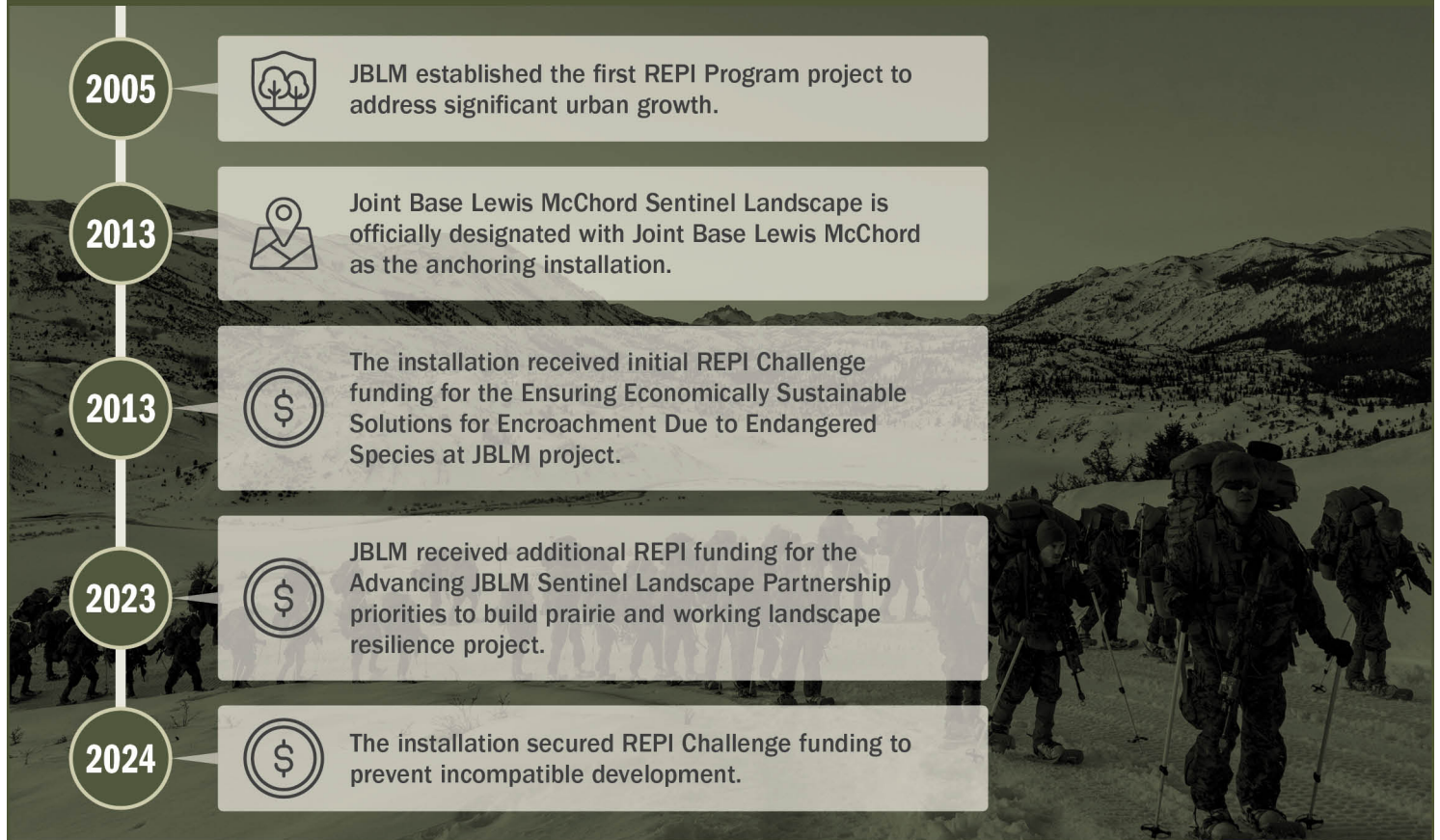
PROJECT OVERVIEW (CONTINUED)

HABITAT PRESERVATION —10 U.S.C. § 2684A

- JBLM is home to several endangered species, including the Yelm Pocket Gopher, Roy Prairie Pocket Gopher, Taylor’s Checkerspot Butterfly, and the Streaked Horned Lark.
- Endangered Species Act requirements impose natural resource management obligations and restrict compatible development, affecting JBLM’s ability to conduct approximately 15,000 annual flight operations.
- JBLM partnered with the REPI Program to protect missions impacted by regulatory encroachment—including weapons and gunnery training, live-fire maneuver, aerial gunnery, helicopter assault operations, and parachute drops—while also conserving habitat for these species.



KEY FISCAL YEAR MILESTONES AT JOINT BASE LEWIS-MCCHORD*



* These milestones demonstrate how the installation is strategically utilizing the REPI Program to mitigate encroachment risks and enhance mission assurance. While not exhaustive, the list highlights the various approaches installations are using to preserve critical testing and training capabilities essential to national defense.



Subscribe to the REPI Program Listserv by scanning the QR code.
For more information about the REPI Program and supportive DOD efforts, please visit www.repi.mil.