



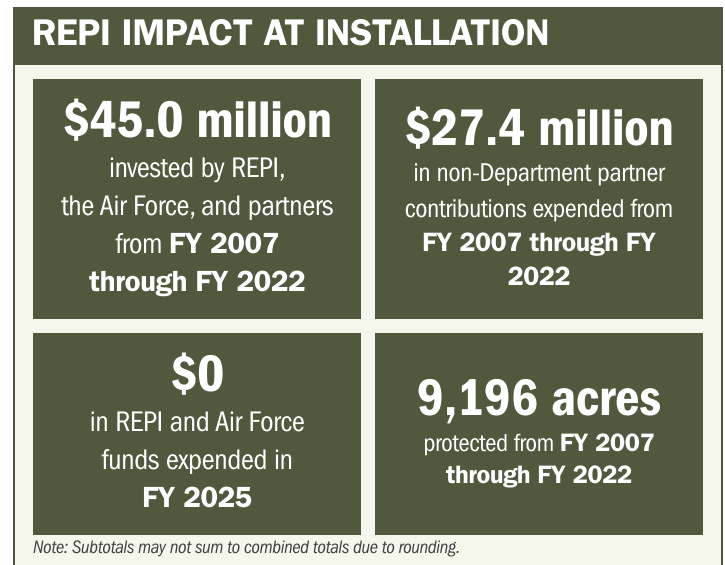
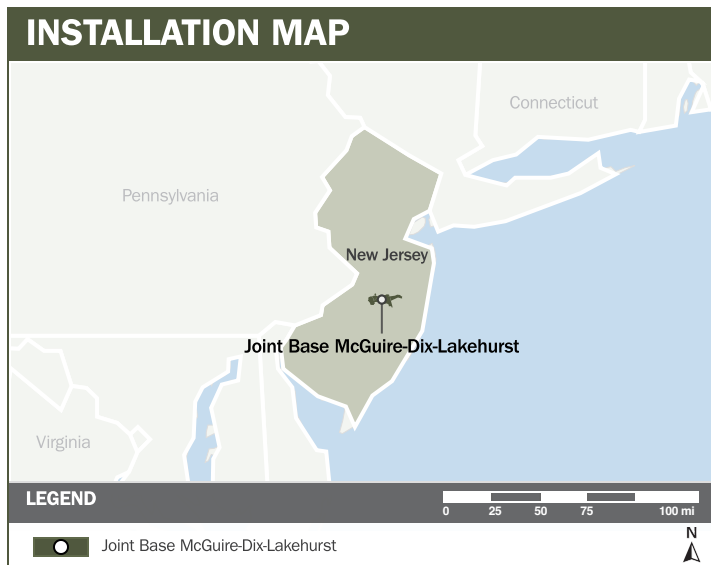
# JOINT BASE MCGUIRE-DIX-LAKEHURST

## ABOUT THE INSTALLATION

Joint Base McGuire-Dix-Lakehurst, located in central New Jersey's pinelands, is a tri-Service installation combining McGuire Air Force Base, Fort Dix, and Naval Air Engineering Station Lakehurst. As the Northeast U.S. Reserve Power Projection Platform, JB MDL receives, trains, equips, and deploys military forces across the joint force. McGuire Field operates two runways and supports 62,000 aircraft operations annually, providing airlift for troops, passengers, vehicles, equipment, fuel, cargo, and mail. The Dix Range complex delivers weapons and maneuver training for units reporting to the 99th Regional Support Command, as well as all Services and authorized non-DoW users. Maxfield Field at Lakehurst—featuring two runways and an Assault Landing Zone (ALZ)—supports 42,000 aircraft operations annually and can accommodate up to 80,000 operations when the ALZ is fully utilized.

## STRENGTHENING MISSION READINESS THROUGH REPI INVESTMENTS

The Department of War's Readiness and Environmental Protection Integration (REPI) Program is essential to protecting Joint Base McGuire-Dix-Lakehurst's aircraft training, runway operations, Army research and development activities, FBI aerial surveillance missions, and New Jersey National Guard readiness. REPI partnerships help safeguard the installation's unique capabilities and ensure uninterrupted access to critical training and testing environments.



## PROJECT OVERVIEW

### INCOMPATIBLE DEVELOPMENT—10 U.S.C. § 2684A

- Joint Base McGuire-Dix-Lakehurst facing incompatible development threats to the installation's 4,200 facilities valued at approximately \$9.3 billion.
- Incompatible development around the installation could impact Joint Base McGuire-Dix-Lakehurst's ability to conduct operations and training unique to the installation's ALZ, the only ALZ in the northeast.



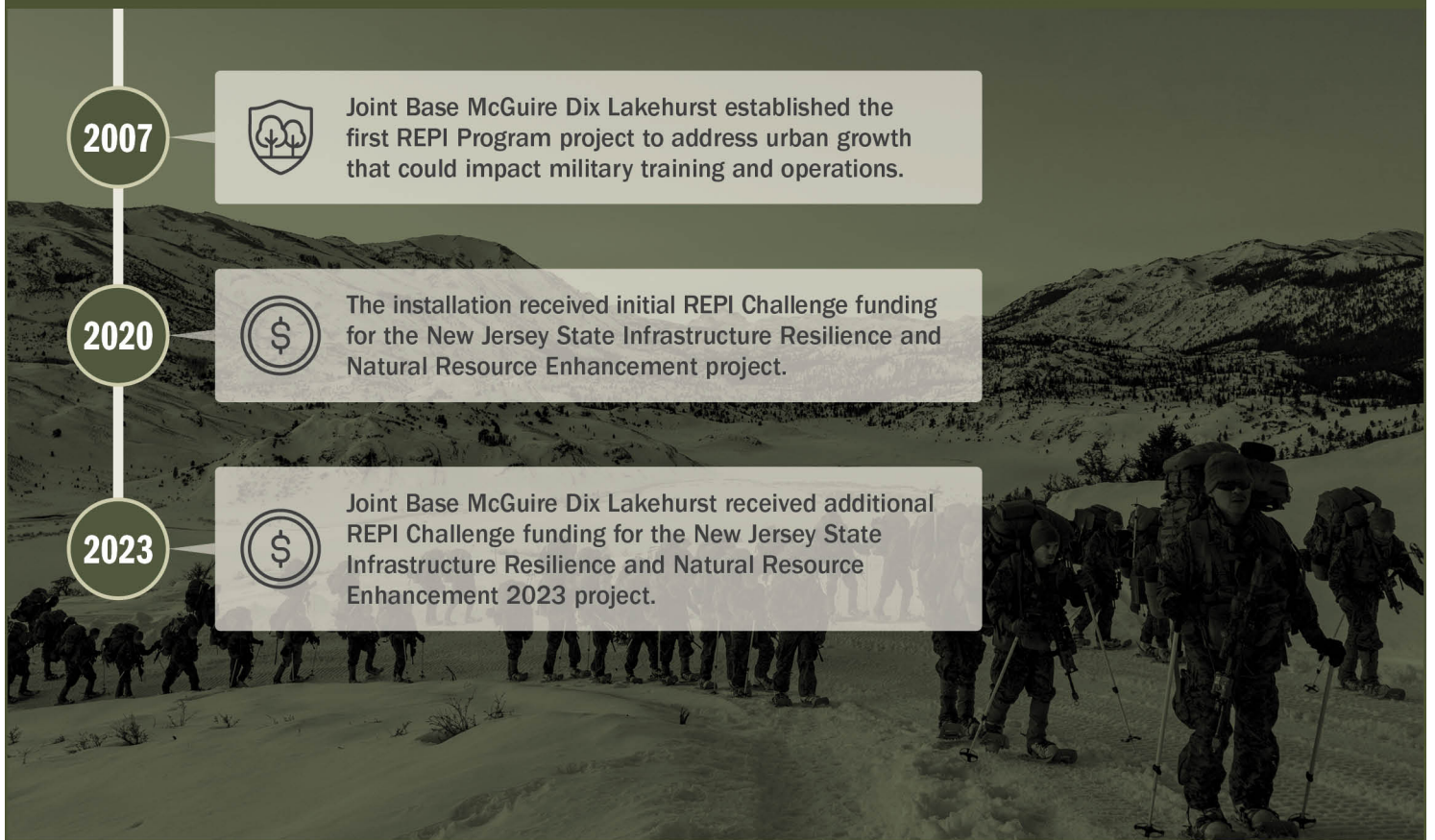


# JOINT BASE MCGUIRE-DIX-LAKEHURST

## PROJECT OVERVIEW (CONTINUED)

- To combat these threats, Joint Base McGuire-Dix-Lakehurst is leveraging REPI funding under 10 U.S.C. § 2684a to protect the only location for the construction and testing of aircraft and arresting gear in the Navy at Lakehurst and several thousand acres of Army ranges.

## KEY FISCAL YEAR MILESTONES AT JOINT BASE MCGUIRE-DIX-LAKEHURST\*



\* These milestones demonstrate how the installation is strategically utilizing the REPI Program to mitigate encroachment risks and enhance mission assurance. While not exhaustive, the list highlights the various approaches installations are using to preserve critical testing and training capabilities essential to national defense.



Subscribe to the REPI Program Listserv by scanning the QR code.  
For more information about the REPI Program and supportive DOD efforts, please visit [www.repi.mil](http://www.repi.mil).