



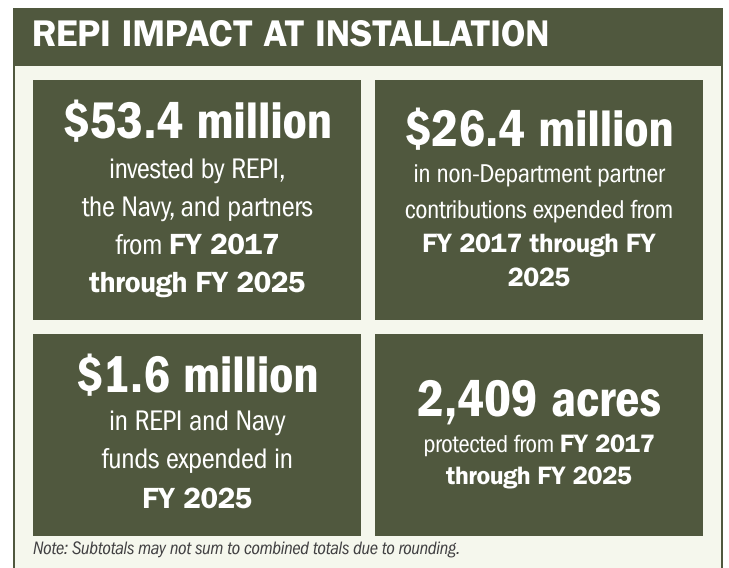
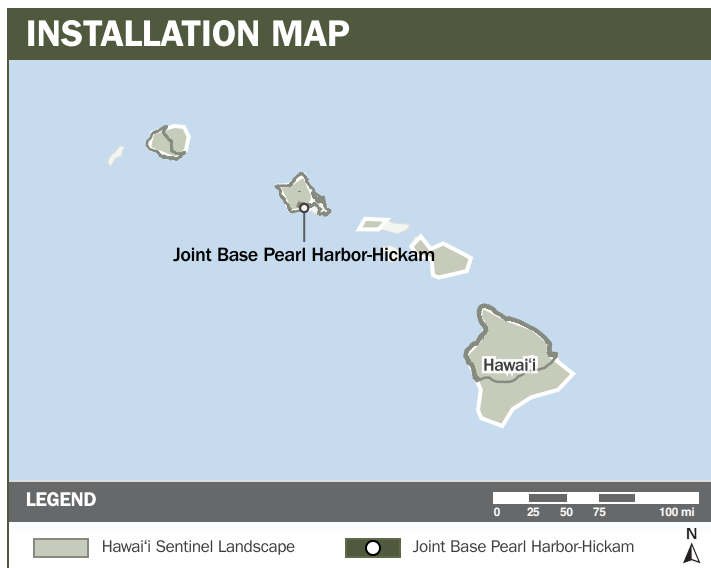
JOINT BASE PEARL HARBOR-HICKAM

ABOUT THE INSTALLATION

Joint Base Pearl Harbor–Hickam (JBPHH), located on O‘ahu, is a cornerstone of the Hawai‘i Sentinel Landscape and a critical hub for U.S. power projection across the IndoPacific. The Main Base maintains operational control of Pearl Harbor, including the Pearl Harbor Naval Shipyard and the Pacific’s only submarine Intermediate Maintenance Facility. The Lualualei and Wahiawā Annexes provide essential munitions storage and enable key INDOPACOM telecommunications and command-and-control missions.

STRENGTHENING MISSION READINESS THROUGH REPI INVESTMENTS

The Department of War’s Readiness and Environmental Protection Integration (REPI) Program is vital to sustaining JBPHH’s long-term operational effectiveness. Through targeted land conservation and partnership-driven investments, REPI prevents incompatible development, reinforces installation resilience, and protects mission-critical capabilities that extend beyond the installation boundary.



PROJECT OVERVIEW

INCOMPATIBLE DEVELOPMENT—10 U.S.C. § 2684A

- JBPHH’s national defense mission depends on unrestricted operations and secure access to training areas, ensuring mission readiness across critical operational landscapes.
- Undeveloped land for sale near the Lualualei and Wahiawā Annexes poses risks to telecommunications missions and national security, with foreign entities showing interest in real estate near sensitive defense assets.
- To counter these threats, JBPHH is leveraging REPI Program authorities under 10 U.S.C. § 2684a to prevent incompatible development, strengthen local food security and economic resilience, and preserve essential operational and strategic capabilities.





JOINT BASE PEARL HARBOR-HICKAM

PROJECT OVERVIEW (CONTINUED)

INSTALLATION RESILIENCE —16 U.S.C. § 670 c-1

- JBPHH and surrounding communities rely on the Pearl Harbor aquifer—located in the upland Waiawa Watershed—as their primary source of potable water.
- Water security is vital for installation and community resilience and is essential for protecting the health of Navy personnel conducting in-water operations in Pearl Harbor.
- Using authority under 16 U.S.C. § 670c1, this initiative enhances installation water security by restoring more than 30,000 acres of upland native forest, reducing erosion and polluted runoff into Pearl Harbor and strengthening long-term operational resilience.



KEY FISCAL YEAR MILESTONES AT JOINT BASE PEARL HARBOR HICKAM*

2022



JBPHH secures its first REPI Challenge project with the Hawai'i Department of Land and Natural Resources, protecting 7,155 acres of upland forest in the Waiawa Watershed to enhance water security and mission readiness.

2024



In partnership with Trust for Public Land and the State Agribusiness Development Corporation, JBPHH completes acquisition of two key parcels (234 acres) for the Wahiawā Annex Buffer Project—three of four REPI projects now complete—ensuring compatible development near critical Navy infrastructure.

2024



The Hawai'i Sentinel Landscape receives formal designation, spanning more than two million acres, with JBPHH serving as a central installation partner.

* These milestones demonstrate how the installation is strategically utilizing the REPI Program to mitigate encroachment risks and enhance mission assurance. While not exhaustive, the list highlights the various approaches installations are using to preserve critical testing and training capabilities essential to national defense.

