



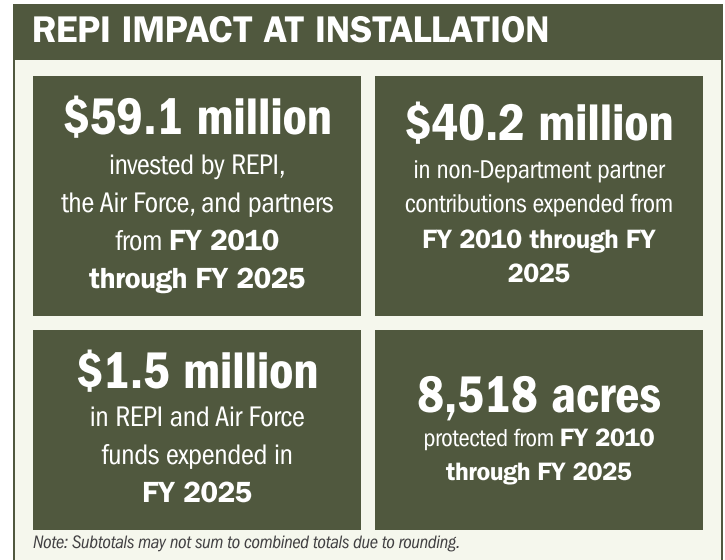
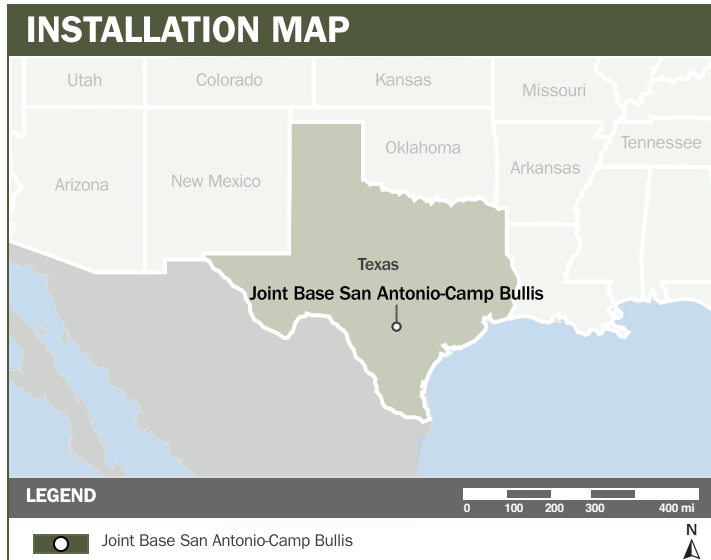
# JOINT BASE SAN ANTONIO-CAMP BULLIS

## ABOUT THE INSTALLATION

Joint Base San Antonio (JBSA) Camp Bullis, located within the Camp Bullis Sentinel Landscape, spans 28,000 acres and serves as the primary field training location for numerous Department of War mission partners. The installation supports more than 700 permanent personnel across training, range management, and installation support functions, generating roughly 500,000 man-days of training each year with an average daily training population of 1,500 personnel. Camp Bullis features 26 specialized field training areas and 16 live-fire ranges. Additional capabilities include convoy live-fire ranges, grenade launcher ranges, demolition areas, land navigation courses, rappel and obstacle towers, helicopter landing zones with designated low-fly routes, four drop zones, and a Combat Assault Landing Strip (CALs) supporting fixed-wing operations.

## STRENGTHENING MISSION READINESS THROUGH REPI INVESTMENTS

The Department of War’s Readiness and Environmental Protection Integration (REPI) Program is essential to sustaining JBSA Camp Bullis’ role as the “home of military medicine.” REPI investments protect the installation’s ability to train and educate all DoW combat medics and most medical specialties, ensuring uninterrupted access to the diverse field environments required for realistic, combat-credible medical training.



## PROJECT OVERVIEW

### INCOMPATIBLE DEVELOPMENT—10 U.S.C. § 2684A

- JBSA Camp Bullis faces increasing residential and commercial development pressures.
- These pressures threaten the installation’s ability to provide the comprehensive field training environment essential for realistic combat medical preparation.
- To counter these threats, Camp Bullis is leveraging REPI funding under 10 U.S.C. § 2684a to protect its unique medical training capabilities.





# JOINT BASE SAN ANTONIO-CAMP BULLIS

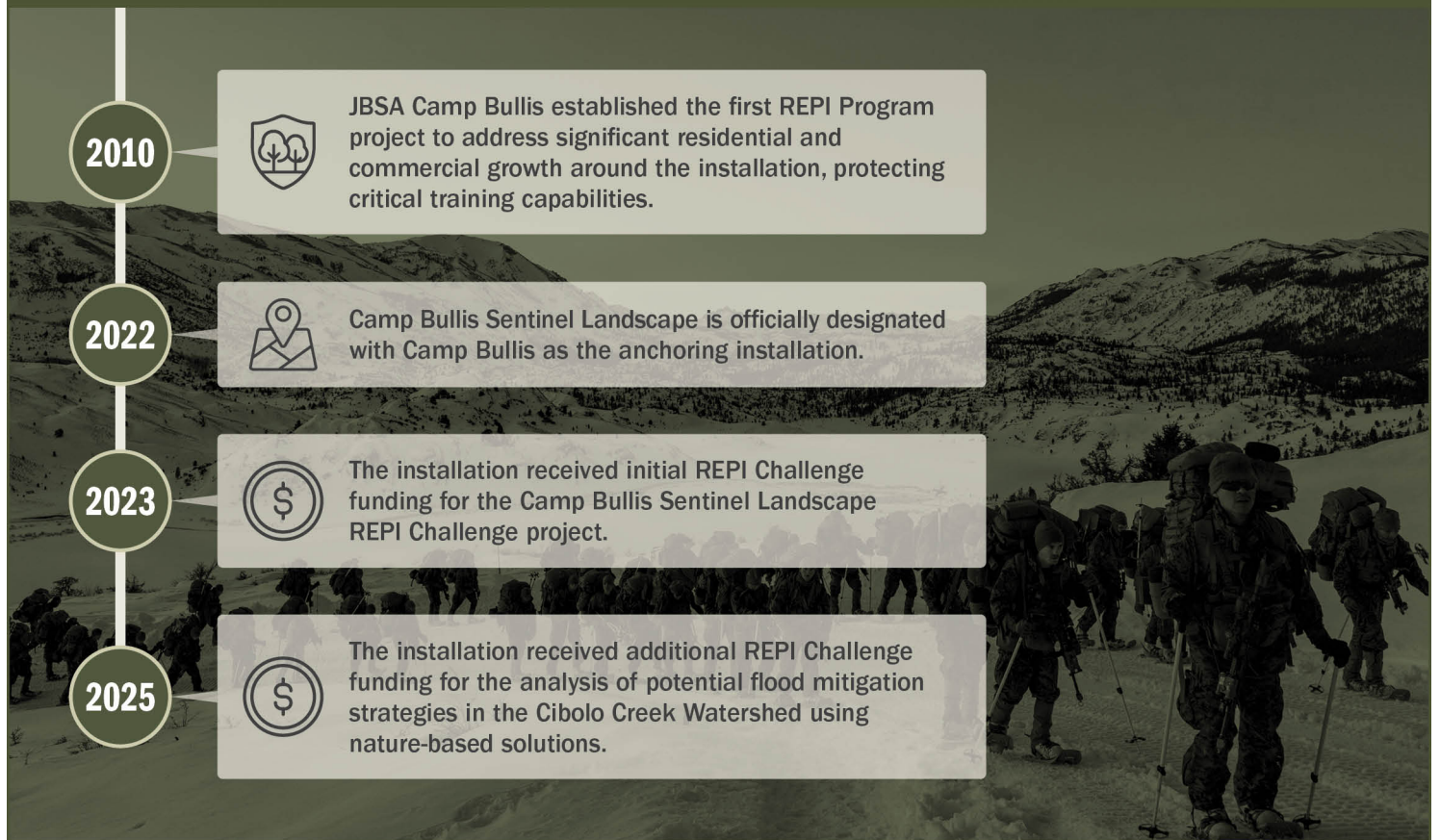
## PROJECT OVERVIEW (CONTINUED)

### HABITAT PRESERVATION —10 U.S.C. § 2684A

- JBSA Camp Bullis is home to the endangered Golden-cheeked Warbler (GCW).
- The installation supports Department of the Air Force Security Forces training and Common Battlefield Airmen Training, both of which require unencumbered land in and around GCW habitat.
- Through REPI, Camp Bullis is designating priority areas to protect 3,300 acres of adjacent land from future encroachment, generating GCW mitigation credits that reduce existing training restrictions while preserving essential habitat.



## KEY FISCAL YEAR MILESTONES AT JOINT BASE SAN ANTONIO-CAMP BULLIS\*



\* These milestones demonstrate how the installation is strategically utilizing the REPI Program to mitigate encroachment risks and enhance mission assurance. While not exhaustive, the list highlights the various approaches installations are using to preserve critical testing and training capabilities essential to national defense.



Subscribe to the REPI Program Listserv by scanning the QR code.  
For more information about the REPI Program and supportive DOD efforts, please visit [www.repi.mil](http://www.repi.mil).