



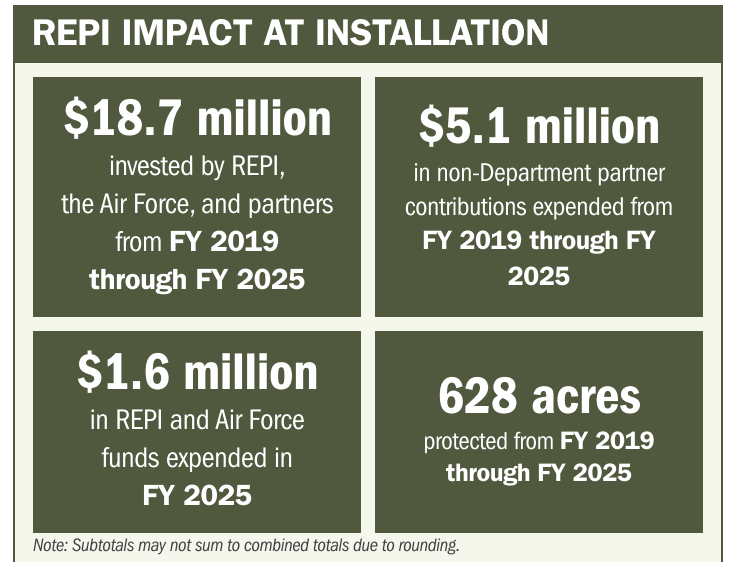
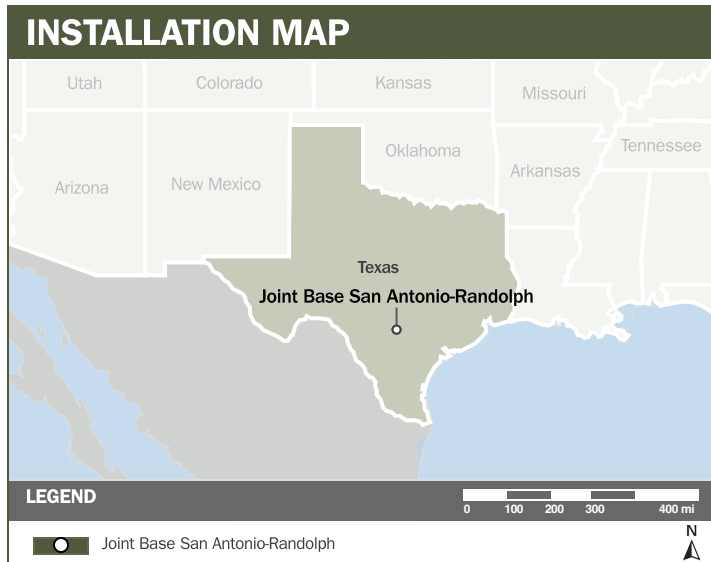
JOINT BASE SAN ANTONIO-RANDOLPH

ABOUT THE INSTALLATION

Centrally located between U.S. coastlines, Joint-Base San Antonio (JBSA) is comprised of four primary locations: Randolph, Fort Sam Houston, Camp Bullis, and Lackland. RND serves as the Department of the Air Force's (DAF) premier and irreplaceable pilot training installation. RND is the only DAF location that introduces pilots to fighter fundamentals, trains experienced pilots as instructors, and trains Combat Systems Operators. RND operates the DAF's busiest air traffic control tower complex and features the DAF's only dual parallel simultaneous instrument approaches.

STRENGTHENING MISSION READINESS THROUGH REPI INVESTMENTS

The Department of War's (DoW) Readiness and Environmental Protection Integration (REPI) Program has helped JBSA Randolph improve operational safety, safeguard compatible areas, prevent workarounds that would have otherwise limited training capacity, and protect the ability to conduct operations and training activities.



PROJECT OVERVIEW

INCOMPATIBLE DEVELOPMENT—10 U.S.C. § 2684A

- JBSA Randolph is facing urban development pressures around the installation.
- These pressures threaten the 212,000 annual aircraft operations, increase potential noise complaints, and interfere with the installation's ability to conduct mission critical operations at the busiest air traffic control tower complex.
- To combat these threats, JBSA RND leveraged REPI funds under 10 U.S.C. § 2684A to protect key parcels, ensure air installations compatible use zones compliance through Memorandums of Understanding, and safeguard the 12th Flying Training Wing's T-6, T-38, and T-7A training missions.





JOINT BASE SAN ANTONIO-RANDOLPH

KEY FISCAL YEAR MILESTONES AT JOINT BASE SAN ANTONIO-RANDOLPH*

2019



The first REPI Program project is established, helping to protect crucial airspace and training operations.



* These milestones demonstrate how the installation is strategically utilizing the REPI Program to mitigate encroachment risks and enhance mission assurance. While not exhaustive, the list highlights the various approaches installations are using to preserve critical testing and training capabilities essential to national defense.



Subscribe to the REPI Program Listserv by scanning the QR code.
For more information about the REPI Program and supportive DOD efforts, please visit www.repi.mil.