



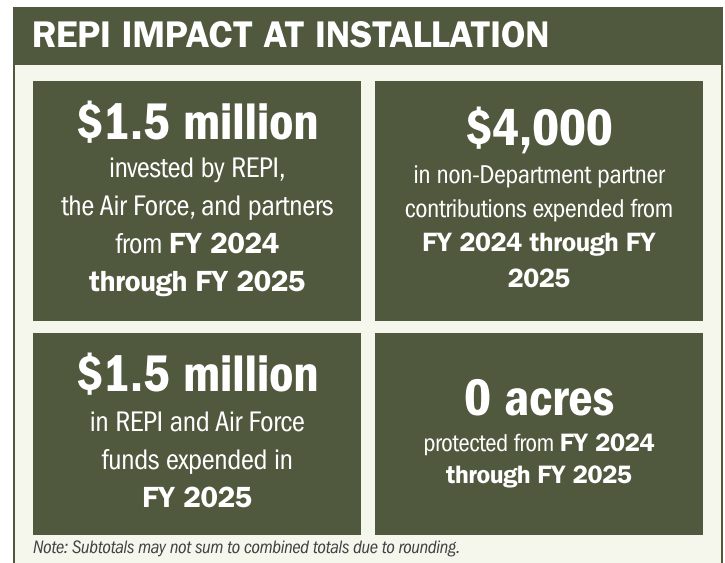
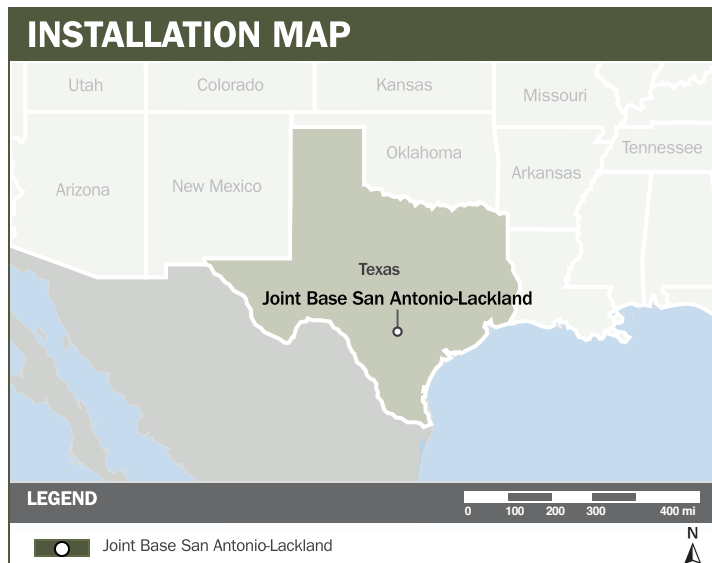
JOINT BASE SAN ANTONIO-LACKLAND

ABOUT THE INSTALLATION

Joint Base San Antonio (JBSA) is centrally located between the nation’s coastlines and is composed of four primary locations: Randolph, Fort Sam Houston, Camp Bullis, and Lackland (LAK). JBSA Lackland is home to the 37th Training Wing—the largest training wing in the Air Force—which educates approximately 80,000 students annually across multiple mission sets, including Basic Military Training, enlisted aircrew and Security Forces training, the Defense Language Institute–English Language Center, and the InterAmerican Air Forces Academy. The wing also serves as the executive agent for the Department of War’s Military Working Dog program, the world’s largest working dog school, training 275 dogs each year for patrol and detection missions. JBSA Lackland additionally hosts the 59th Medical Wing, which provides advanced medical care and uses the Kelly runway for strategic aeromedical evacuation of burn patients from overseas contingency operations.

STRENGTHENING MISSION READINESS THROUGH REPI INVESTMENTS

The Department of War’s Readiness and Environmental Protection Integration (REPI) Program is essential to sustaining JBSA Lackland’s mission to train and educate the entire enlisted corps of the active-duty Air Force, Air National Guard, and Air Force Reserve. As the sole location for enlisted Basic Military Training, JBSA Lackland relies on REPI partnerships and acquisitions to protect the installation’s training environment and ensure uninterrupted mission execution.



PROJECT OVERVIEW

INCOMPATIBLE DEVELOPMENT—10 U.S.C. § 2684A

- JBSA Lackland is facing increasing development pressures around the installation.
- Incompatible development threatens the installation’s ability to support current and future flying missions, expand and sustain Basic Military Training, and maintain uninterrupted operations at its firing ranges.





JOINT BASE SAN ANTONIO-LACKLAND

PROJECT OVERVIEW (CONTINUED)

- To protect these mission-critical capabilities, JBSA Lackland is leveraging REPI funds under 10 U.S.C. § 2684a to ensure continuous military operations.

KEY FISCAL YEAR MILESTONES AT JOINT BASE SAN ANTONIO-LACKLAND*

2018



The first REPI project is established at JBSA Lackland, safeguarding critical training and airspace.



* These milestones demonstrate how the installation is strategically utilizing the REPI Program to mitigate encroachment risks and enhance mission assurance. While not exhaustive, the list highlights the various approaches installations are using to preserve critical testing and training capabilities essential to national defense.



Subscribe to the REPI Program Listserv by scanning the QR code.
For more information about the REPI Program and supportive DOD efforts, please visit www.repi.mil.