



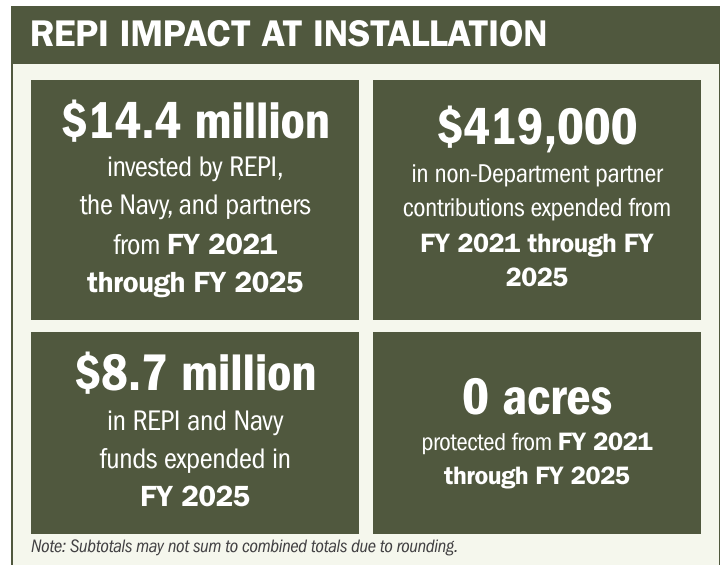
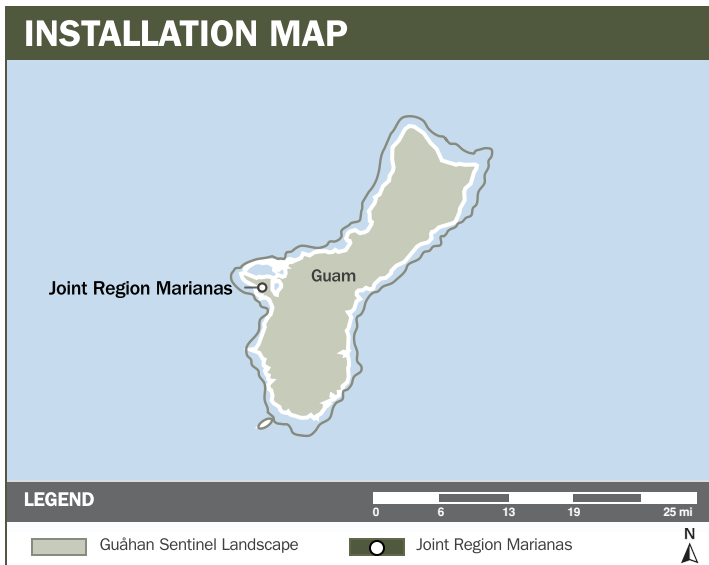
JOINT REGION MARIANAS

ABOUT THE INSTALLATION

Joint Region Marianas (JRM) enables critical Department of War (DoW) missions through its key installations—Naval Base Guam, Andersen Air Force Base, Marine Corps Base Camp Blaz, and the Military Lease Area on Tinian. These installations anchor the Guåhan Sentinel Landscape and provide essential infrastructure for evolving training requirements that support strategic force rebalancing across the Pacific. Positioned throughout the Mariana Archipelago, including Guam and the Commonwealth of the Northern Mariana Islands, JRM sites form the backbone of regional operations and U.S. force posture.

STRENGTHENING MISSION READINESS THROUGH REPI INVESTMENTS

The DoW's Readiness and Environmental Protection Integration (REPI) Program is essential to sustaining JRM's long-term operational resilience. Through targeted habitat preservation and land conservation, REPI investments strengthen installation resilience, reduce encroachment risks from protected species, prevent training and land-use restrictions, and safeguard the readiness of forces operating in this strategically vital region.



PROJECT OVERVIEW

SIKES ACT—16 U.S.C. § 670c-1

- Rising regional security threats and future mission requirements are driving major investments in expanded and modernized military infrastructure, as well as the addition of more than 20,000 personnel.
- These efforts are constrained by limited land availability and by growing encroachment risks from wildland fire, coastal flooding, and erosion, which threaten infrastructure, water quality, and coastal training capabilities.
- Using Sikes Act authority, this project advances firebreak construction and watershed restoration to reduce wildfire and water-quality threats, strengthening the resilience of critical coastal training lands and supporting uninterrupted mission execution.





JOINT REGION MARIANAS

PROJECT OVERVIEW (CONTINUED)

HABITAT PRESERVATION—10 U.S.C. § 2684A

- JRM mission readiness depends on unrestricted access to training areas and ranges. However, 33 federally listed species and degraded habitats across the Marianas impose increasing regulatory pressures that limit operational use and constrain future expansion of military lands.
- Conservation measures and mitigation efforts associated with the Endangered Species Act Section 7 compliance result in significant time delays as well as increased construction costs.
- To reduce these constraints, JRM is leveraging REPI authorities under 10 U.S.C. § 2684A to build a regional acquisition and easement program that secures high-quality off-installation habitat for listed species, including limestone forest restoration, invasive species control, species surveys and monitoring, and native plant restoration to improve ecological baselines.



KEY FISCAL YEAR MILESTONES AT JOINT REGION MARIANAS*

2021



JRM secures its first REPI funding, establishing a foundational project to support long term installation resilience and mission readiness.

2023



JRM receives REPI Challenge funding to advance mission critical habitat enhancement, including invasive ungulate removal and upgrades to native plant nurseries that reduce encroachment pressures on training lands.

2024



JRM launches the first CNMI REPI project on Tinian, expanding regional resilience through invasive species removal, native out planting, and strengthened wildfire protection supporting key training areas.

2024



The Guåhan Sentinel Landscape is formally designated, with all three JRM installations recognized as anchor sites essential to U.S. force posture and operational endurance in the Pacific.



* These milestones demonstrate how the installation is strategically utilizing the REPI Program to mitigate encroachment risks and enhance mission assurance. While not exhaustive, the list highlights the various approaches installations are using to preserve critical testing and training capabilities essential to national defense.



Subscribe to the REPI Program Listserv by scanning the QR code.
For more information about the REPI Program and supportive DoW efforts, please visit www.repi.mil.