



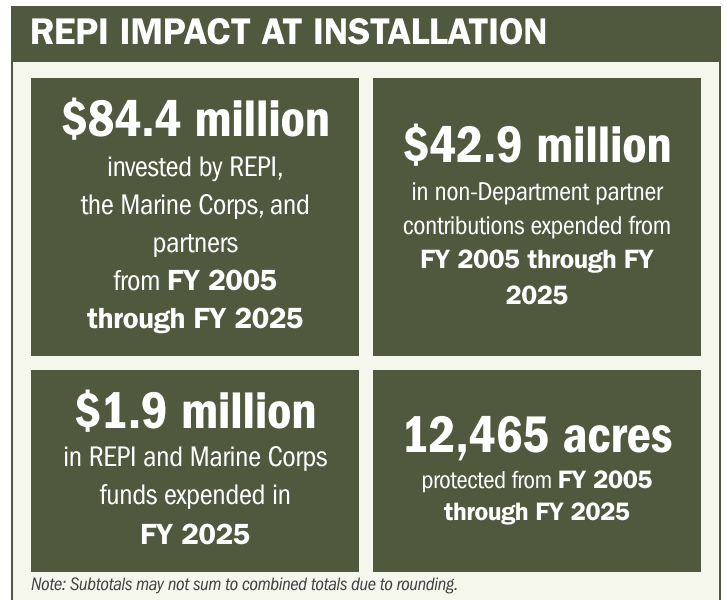
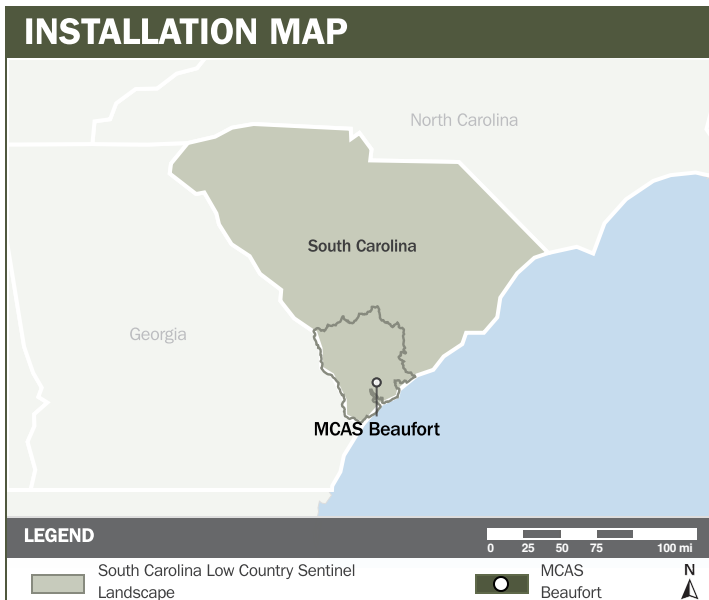
MCAS BEAUFORT

ABOUT THE INSTALLATION

Marine Corps Air Station (MCAS) Beaufort is a mission-critical installation located within the South Carolina Lowcountry Sentinel Landscape that sustains a lethal, combat-ready, forward-postured, and resilient force. Home to Marine Aircraft Group 31 (MAG-31), MCAS Beaufort hosts the Marine Corps' only East Coast Fleet Replacement Squadron, producing combat-ready F-35B pilots. MAG-31 executes anti-air warfare, offensive air support, and joint-force integration missions vital to regional and global readiness. MCAS Beaufort also owns and operates Townsend Bombing Range (TBR), an air-to-ground bombing range supporting training for the Marine Corps, Navy, Air Force, Army, National Guard, and allied forces

STRENGTHENING MISSION READINESS THROUGH REPI INVESTMENTS

The Department of War's (DoW) Readiness and Environmental Protection Integration (REPI) Program has helped MCAS Beaufort protect airspace for realistic mission rehearsal and dynamic force employment. Through collaborative land-use planning and strategic easements, MCAS Beaufort has preserved over 12,000 acres using REPI funds, enabling landscape-scale conservation and long-term mission assurance.



PROJECT OVERVIEW

INCOMPATIBLE DEVELOPMENT—10 U.S.C. § 2684A

- The open coastal environment of MCAS Beaufort provides ideal conditions for uninterrupted, multiscale training.
- However, escalating high-end luxury development and tourism, population growth, and natural threats—such as destructive weather—threaten operational access and mission integrity.
- MCAS Beaufort prevents incompatible land use and ensure regional resilience by leveraging REPI funds under 10 U.S.C. § 2684a to sustain low-altitude training, extend protected corridors, support marsh and shoreline resilience, and safeguard water infrastructure for a lethal, agile, and resilient joint force.





MCAS BEAUFORT

KEY FISCAL YEAR MILESTONES AT MCAS BEAUFORT*

2004 Established the first REPI project to prevent incompatible development.

2023 The South Carolina Lowcountry Sentinel Landscape is officially designated, with MCAS Beaufort as an anchoring installation.

2024 Received REPI Challenge funding to expand landscape scale protection around MCAS Beaufort, prevent incompatible development in rapidly growing coastal zones, and strengthen installation resilience.

* These milestones demonstrate how the installation is strategically utilizing the REPI Program to mitigate encroachment risks and enhance mission assurance. While not exhaustive, the list highlights the various approaches installations are using to preserve critical testing and training capabilities essential to national defense.



Subscribe to the REPI Program Listserv by scanning the QR code.
For more information about the REPI Program and supportive DOD efforts, please visit www.repi.mil.