



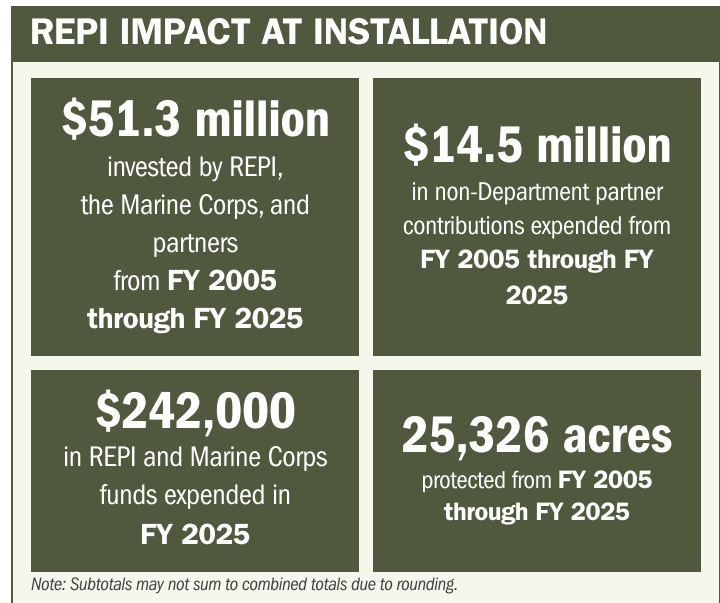
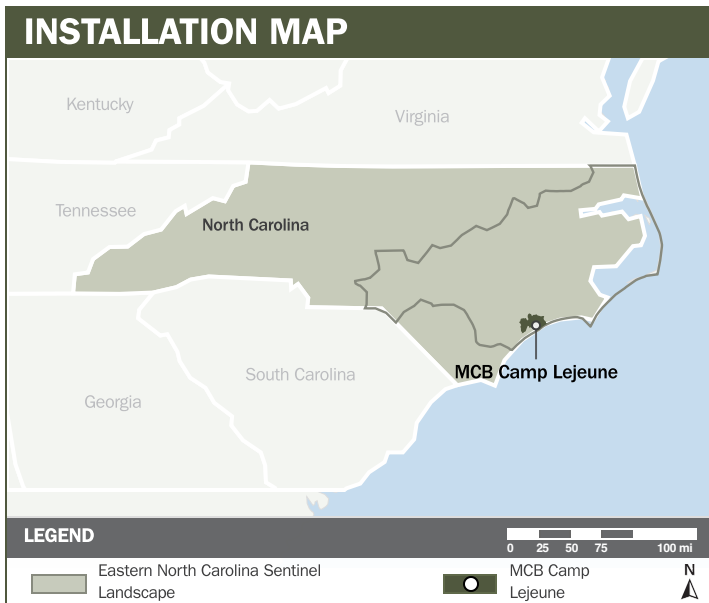
MCB CAMP LEJEUNE

ABOUT THE INSTALLATION

Marine Corps Base (MCB) Camp Lejeune and Marine Corps Air Station (MCAS) New River, located within the Eastern North Carolina Sentinel Landscape, support force readiness by providing training, logistics support, garrison support, mobilization, and deployment services. The installation's mission is to provide a suitable amphibious training environment essential for preparing II Marine Expeditionary Force for global deployment. MCB Camp Lejeune and MCAS New River encompass 203 square miles with 92,934 acres of usable training area, including 11.5 miles of ocean coastline, live-fire ranges and maneuver training areas, urban training facilities, and 200 square miles of special-use airspace.

STRENGTHENING MISSION READINESS THROUGH REPI INVESTMENTS

The Department of War's (DoW) Readiness and Environmental Protection Integration (REPI) Program has helped MCB Camp Lejeune and MCAS New River safeguard amphibious training capabilities, aviation training requirements, maritime operations, and increase airspace access for new platforms, weapons systems, and tactics. Through strategic partnerships, the REPI Program supports the installations' ability to protect tracts of forested and working lands to mitigate encroachment.



PROJECT OVERVIEW

INCOMPATIBLE DEVELOPMENT—10 U.S.C. § 2684A

- The installations rely on unencumbered space to train Marines across diverse terrains, particularly in amphibious environments.
- The surrounding region has experienced significant population growth and loss of farms and forestry, reducing available land, air, and sea training space.
- To combat these threats, MCB Camp Lejeune is using REPI funds under 10 U.S.C. § 2684a to prevent conversion of lands to residential development, mitigate impacts to mission requirements, and protect future range modernization and infrastructure.





MCB CAMP LEJEUNE

PROJECT OVERVIEW (CONTINUED)

INSTALLATION RESILIENCE—10 U.S.C. § 2684A

- MCB Camp Lejeune’s coastal location makes it highly vulnerable to flooding and severe weather impacts.
- Flooding damages primary and secondary roadways, disrupts training schedules, and limits full operational capacity across the installation.
- MCB Camp Lejeune and MCAS New River are partnering with the REPI Program to strengthen watershed resilience and address coastal and riverine flooding in key impact areas, reducing long-term risks to infrastructure and mission readiness.



KEY FISCAL YEAR MILESTONES AT MCB CAMP LEJEUNE*

- 2005** Received REPI funding, establishing the first REPI project to prevent incompatible development.
- 2016** The Eastern North Carolina Sentinel Landscape was officially designated, with MCB Camp Lejeune and MCAS New River as anchoring installations.
- 2017** Received initial REPI Challenge funding to support the Eastern North Carolina Sentinel Landscape’s mission protection efforts.
- 2021** Received additional REPI Challenge funding to strengthen military readiness, working lands, and nature based solutions.
- 2022** Received REPI Challenge funding to further enhance installation resilience, protect working lands, and support nature based solutions across the landscape.

* These milestones demonstrate how the installation is strategically utilizing the REPI Program to mitigate encroachment risks and enhance mission assurance. While not exhaustive, the list highlights the various approaches installations are using to preserve critical testing and training capabilities essential to national defense.



Subscribe to the REPI Program Listserv by scanning the QR code.
For more information about the REPI Program and supportive DoW efforts, please visit www.repi.mil.